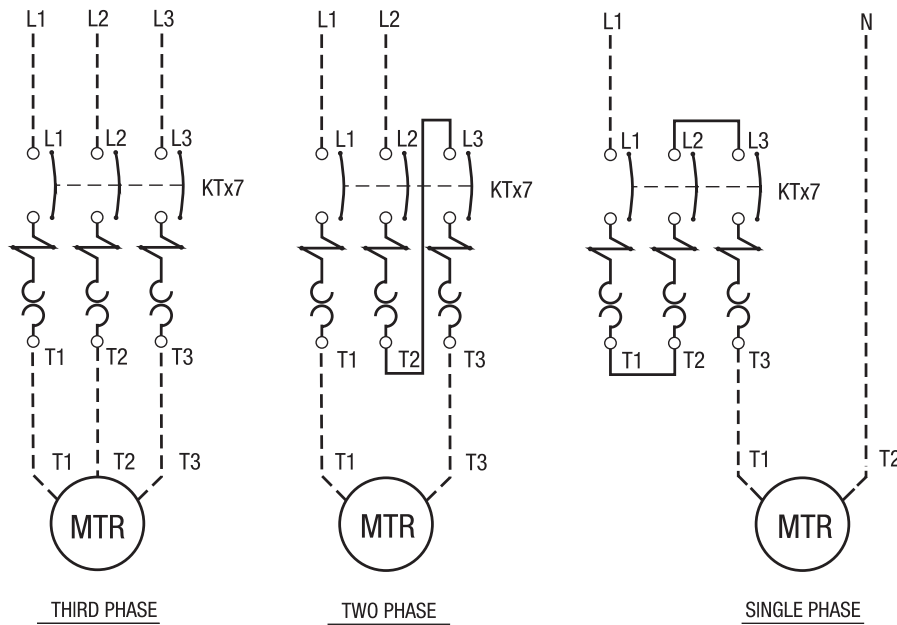
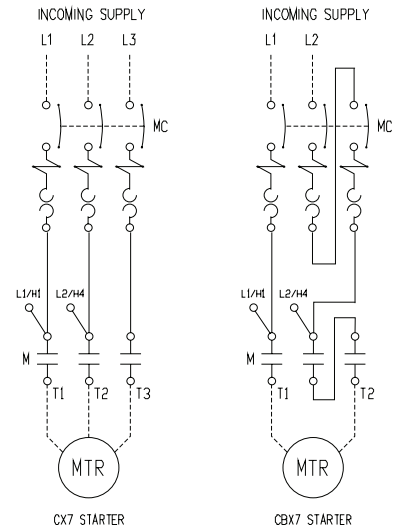
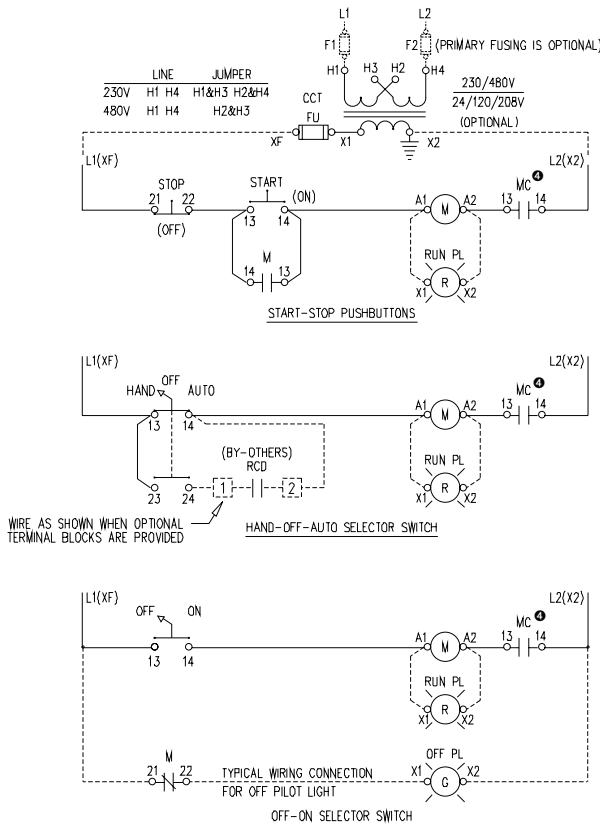


Single, Two and Three Phase Connection Diagram

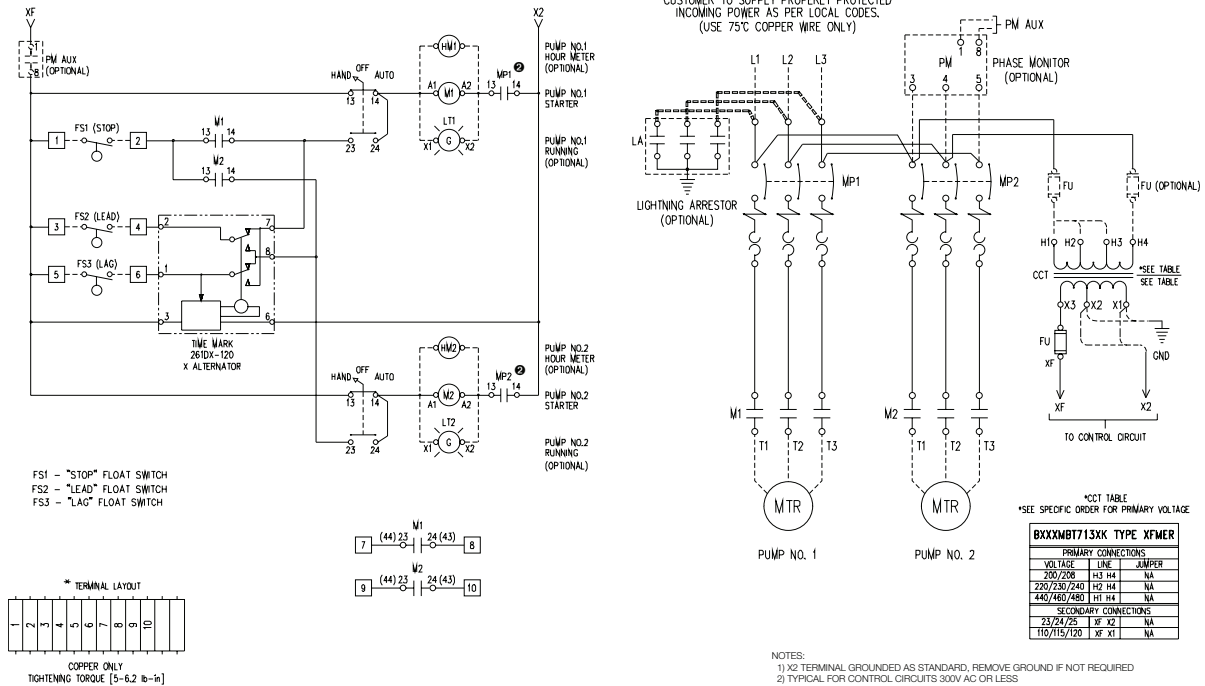


**Type E/F Combination Controller Full Voltage Non-Reversing
AC Control with D7 Series Pilot Devices**

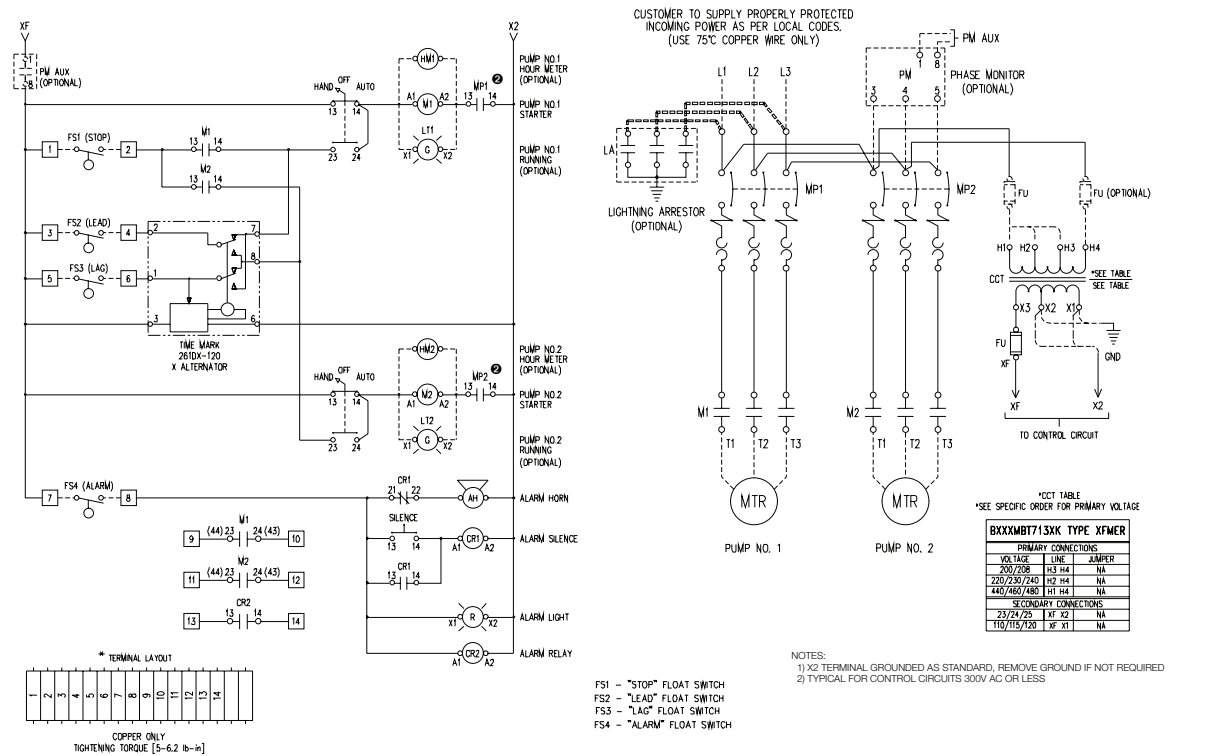


- NOTES:
- 1) RCD: STANDS FOR REMOTE CONTROL DEVICE BY CUSTOMER
 - 2) MC: KT7 "TYPE E" MOTOR CONTROLLER
 - 3) X2 TERMINAL GROUNDED AS STANDARD, REMOVE GROUND IF NOT REQUIRED
 - 4) TYPICAL FOR CONTROL CIRCUITS 300V AC OR LESS

KTA7 Type E/F Combination 3-PH FVNR Duplex Alternating Panel with H-O-A, Lead, Lag and Stop 1-Pole Float Switches

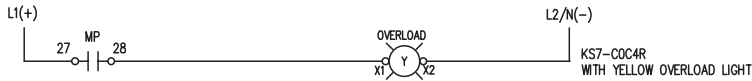
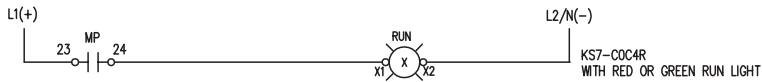
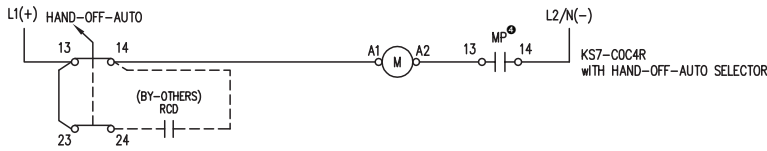
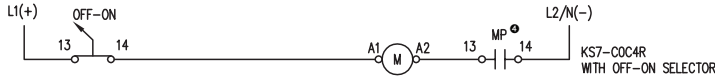
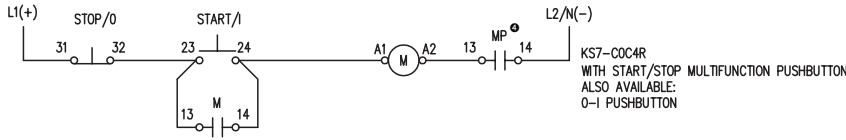


KTA7 Type E/F Combination 3-PH FVNR Duplex Alternating Panel with H-O-A, Alarm Circuit, Lead, Lag, Stop, 1-Pole Float Switches

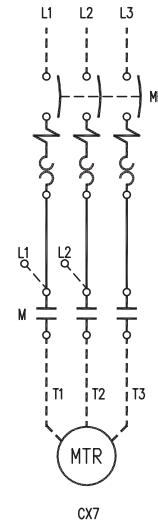


F Enclosed Motor Circuit Controllers

ECombo/EComboPlus/CX7 KWIKstarters Non-Reversing

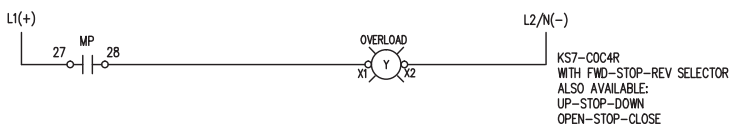
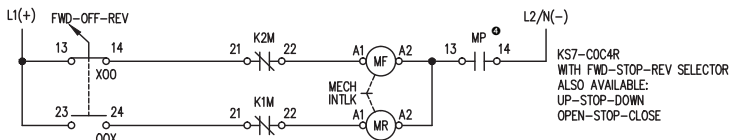
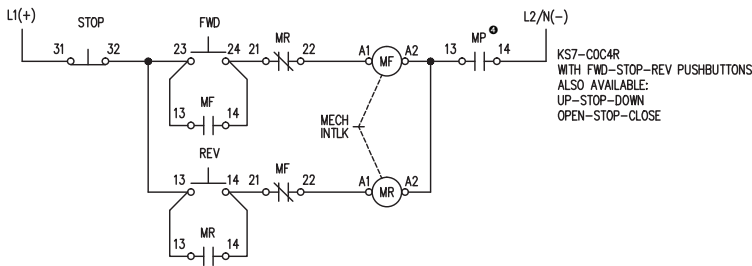


CUSTOMER TO SUPPLY PROPER BRANCH
CIRCUIT PROTECTION AS PER LOCAL CODES.
(USE 75°C COPPER WIRE ONLY)

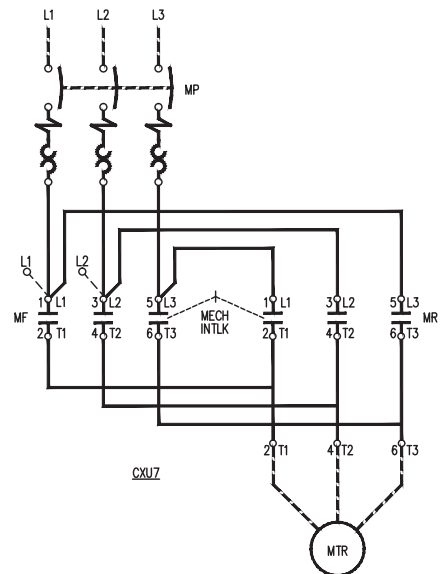


- NOTES:
- 1) MP: KT7 "TYPE E" MOTOR CONTROLLER
 - 2) DO NOT CONNECT A1-A2 TO L1-L2 UNLESS COIL VOLTAGE MATCHES LINE VOLTAGE
 - 3) OPTIONAL RUN LIGHT, MAY BE RED OR GREEN
 - 4) TYPICAL FOR CONTROL CIRCUITS 300V AC OR LESS

ECombo/EComboPlus/CXU7 KWIKstarters Reversing



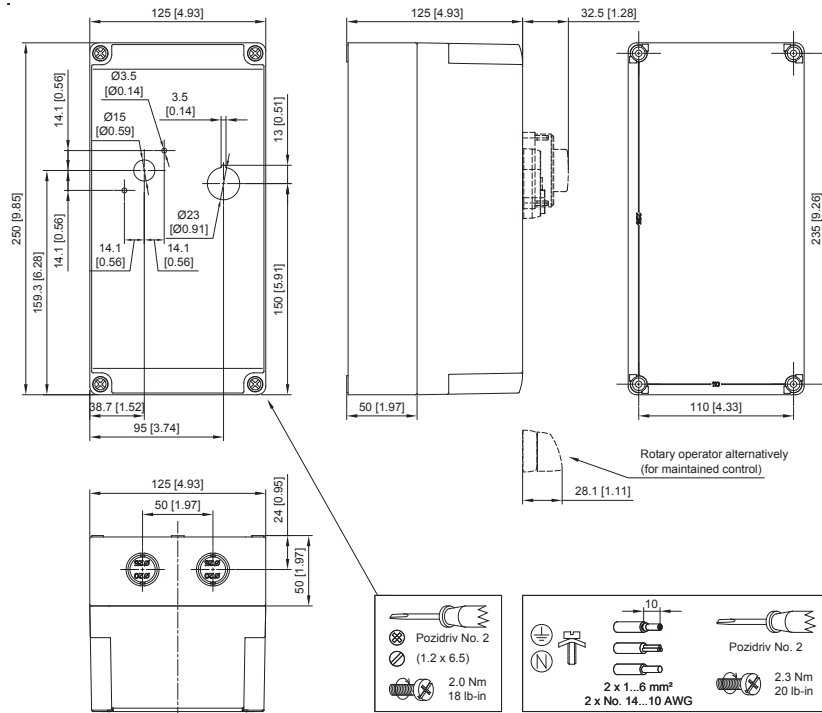
CUSTOMER WILL PROVIDE BRANCH CIRCUIT PROTECTION (F1)
SEE THE APPLICATION INSTRUCTION SHEET - COMPONENT SELECTION TABLES
FOR MAX. FUSE SIZE, CLASS, AND APPLICABLE SHORT CIRCUIT RATING
(USE 75°C COPPER WIRE ONLY)



- NOTES:
- 1) MECHANICAL INTERLOCK
 - 2) MP: KT7 "TYPE E" MOTOR CONTROLLER
 - 3) DO NOT CONNECT A1-A2 TO L1-L2 UNLESS COIL VOLTAGE MATCHES LINE VOLTAGE
 - 4) TYPICAL FOR CONTROL CIRCUITS 300V AC OR LESS

CX7/CXU7 KWIKstarter Enclosure KS7-COC4R (Dimension Code Q4)

Dimensions are in decimal inches. Dimensions not intended for manufacturing purposes.



Enclosure Dimensions

Dimensions are in decimal inches. Dimensions not intended for manufacturing purposes. See dimension drawings on next page.

IP65 ENCLOSURE

Encl. ID Dim.	Figure No.	Enclosure Size			Mtg Depth D	Mtg Centers		Panel Size Sub-Pan	
		A	B	C		E	F		
AY	1	5.91	3.54	5.12	N/A	N/A	5.32	N/A	N/A

TYPE-4/4X/12 ENCLOSURE

Encl. ID Dim.	Figure No.	Enclosure Size			Mtg Depth D	Mtg Centers		Panel Size Sub-Pan	
		A	B	C		E	F		
Q5	2	7.00	5.03	5.02	4.3	4.21	6.18	N/A	N/A
Q6	3	7.00	7.00	6.02	5.3	6.18	6.18	N/A	N/A
Q7	4	11.87	7.31	10.6	7.23	6.54	11.10	N/A	N/A

TYPE-4/12 & 12 ENCLOSURES

Encl. ID Dim.	Figure No.	Enclosure Size			Mtg Depth D	Mtg Centers		Panel Size Sub-Pan		H
		A	B	C		E	F			
W6	5	9.84	7.87	8.24	5.31	5.31	9.13	9.09	7.13	-
W7	5	13.78	11.81	10.2	7.28	9.25	13.07	13.03	11.06	-
L	6	8	6	6	5.53	4	8.75	6.75	4.88	9.5

TYPE 4/7/9 ENCLOSURES

Encl. ID Dim.	Figure No.	Mtg. Dim.			Inside Dim. D	Outside Dim.				Conduit Entry Top & Bot
		A	B	C		E	F	G	H	
EX	7	3.25	7.75	3.5	6.0	3.0	4.56	7.06	6.25	0.75
EY	7	5.50	8.50	5.50	5.50	6.0	7.0	7.0	8.84	1.0
EZ	8	9.13	4.50	6.0	8.0	6.63	9.25	11.25	9.34	1.50

F
Enclosed Motor Circuit Controllers

Enclosures

See Enclosure Dimension Charts on Previous Page.

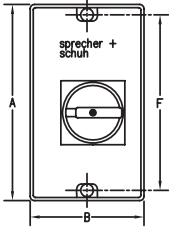


FIGURE NO. 1

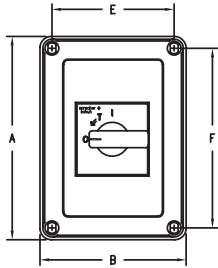


FIGURE NO. 2

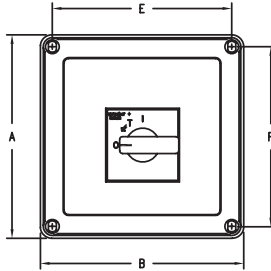


FIGURE NO. 3

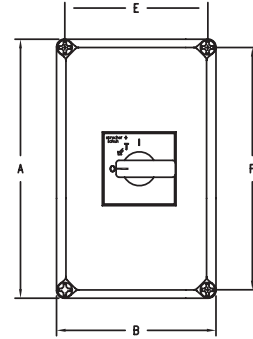
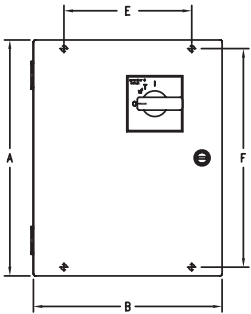
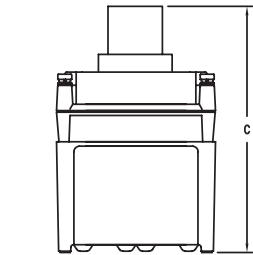
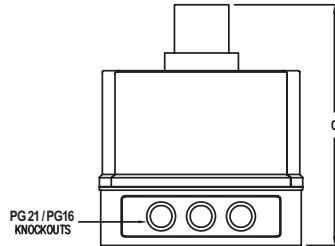
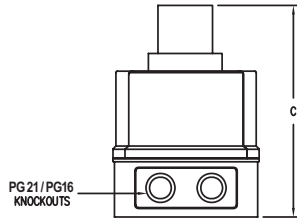
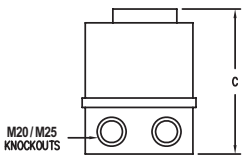


FIGURE NO. 4



TYPE 4/12
FIGURE NO. 5

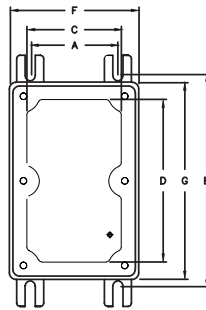
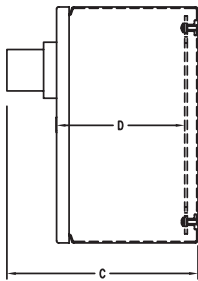


FIGURE NO. 7

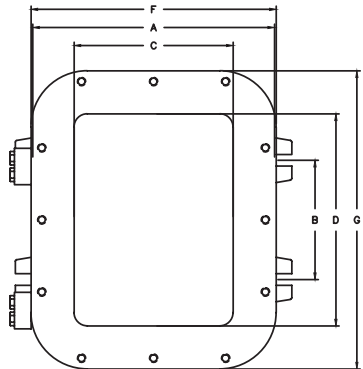
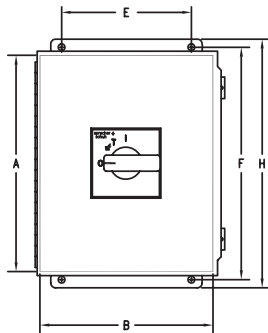
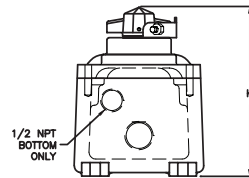
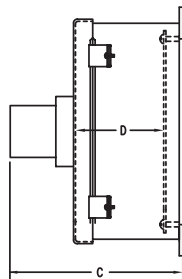


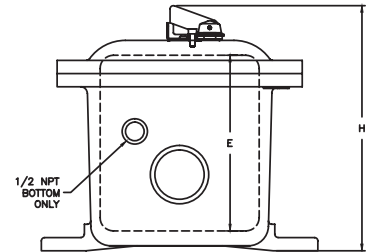
FIGURE NO. 8



TYPE 12
FIGURE NO. 6



1/2 NPT
BOTTOM
ONLY



1/2 NPT
BOTTOM
ONLY

F

Enclosed Motor Circuit Controllers