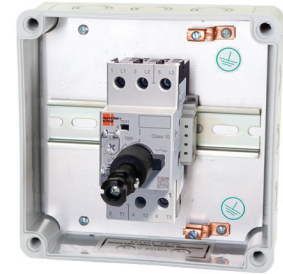


Enclosed KTU9 Circuit Breaker - Type 4 / 4X / 12

Fixed Thermal Current Rating [A]		Magnetic Trip [A]	Interrupting Rating (60Hz) [KA]			Catalog Number	Dimension Code
			240V	480Y /277V	600Y /347V		
KTU9-D — High Interrupting Capacity – 2-Pole							
0.5	15...20xI _n	100	100	50	KTU9-40H-2D-0.5-VG	Q6 ①	
1.0	15...20xI _n	100	100	50	KTU9-40H-2D-1-VG		
2.0	15...20xI _n	100	100	50	KTU9-40H-2D-2-VG		
3.0	15...20xI _n	100	100	50	KTU9-40H-2D-3-VG		
4.0	15...20xI _n	100	100	50	KTU9-40H-2D-4-VG		
5.0	15...20xI _n	100	100	50	KTU9-40H-2D-5-VG		
6.0	15...20xI _n	100	100	50	KTU9-40H-2D-6-VG		
8.0	15...20xI _n	100	100	50	KTU9-40H-2D-8-VG		
10.0	15...20xI _n	100	100	50	KTU9-40H-2D-10-VG		
12.0	15...20xI _n	65	65	25	KTU9-40H-2D-12-VG		
15.0	15...20xI _n	65	65	25	KTU9-40H-2D-15-VG		
20.0	15...20xI _n	65	65	~	KTU9-40H-2D-20-VG		
25.0	15...20xI _n	65	65	~	KTU9-40H-2D-25-VG		
30.0	15...20xI _n	65	65	~	KTU9-40H-2D-30-VG		
35.0	14 x I _n	65	65	~	KTU9-40H-2D-35-VG		
40.0	12 x I _n	65	65	~	KTU9-40H-2D-40-VG		
KTU9-D — High Interrupting Capacity – 3-Pole							
0.5	15...20xI _n	100	100	50	KTU9-40H-3D-0.5-VG	Q6 ①	
1.0	15...20xI _n	100	100	50	KTU9-40H-3D-1-VG		
2.0	15...20xI _n	100	100	50	KTU9-40H-3D-2-VG		
3.0	15...20xI _n	100	100	50	KTU9-40H-3D-3-VG		
4.0	15...20xI _n	100	100	50	KTU9-40H-3D-4-VG		
5.0	15...20xI _n	100	100	50	KTU9-40H-3D-5-VG		
6.0	15...20xI _n	100	100	50	KTU9-40H-3D-6-VG		
8.0	15...20xI _n	100	100	50	KTU9-40H-3D-8-VG		
10.0	15...20xI _n	100	100	50	KTU9-40H-3D-10-VG		
12.0	15...20xI _n	65	65	25	KTU9-40H-3D-12-VG		
15.0	15...20xI _n	65	65	25	KTU9-40H-3D-15-VG		
20.0	15...20xI _n	65	65	~	KTU9-40H-3D-20-VG		
25.0	15...20xI _n	65	65	~	KTU9-40H-3D-25-VG		
30.0	15...20xI _n	65	65	~	KTU9-40H-3D-30-VG		
35.0	14 x I _n	65	65	~	KTU9-40H-3D-35-VG		
40.0	12 x I _n	65	65	~	KTU9-40H-3D-40-VG		

Non-metallic,
Type 4 / 4X / 12 Enclosure



Includes:

- Type 4 / 4X / 12 enclosure – watertight, dusttight, corrosion resistant
- KTU9 UL489 Molded Case Circuit Breaker
- Black Type 4/4X/12; IP66 handle (Cat.# KT9-HTN Series E) ②

Modifications (Factory Assembled) ③

KT9 Auxiliaries & Trip Contacts - Front Mount 250V max.	Add Suffix to Cat. Number
1 NO Auxiliary	-B
1 NC Auxiliary	-A
1 NO + 1 NC Auxiliary	-C
2 NO Auxiliaries	-D
1 NO SC+OL + 1 NC Auxiliary	-R
1 NO SC+OL + 1 NO Auxiliary	-S

① KTU9 is 80% rated in this enclosure.

② A red and yellow handle may be selected instead of the standard black handle. Change "VG" suffix to "VJ". Ex: Change KTU9-40H-2D-0.16-VG to KTU9-40H-2D-0.16-VJ.

③ Load Terminal Cover KT9-PEFC is included with any factory modifications.

F Enclosed Molded Case Circuit Breakers

Enclosed KTU9 Circuit Breaker - Type 12

Amp / Interrupt Rating		Painted Steel, Type 12 Enclosure				Dim Code
Fixed Thermal Current Rating [A]	Magnetic Trip [A]	Interrupting Rating (60Hz) [KA]			Catalog Number	
		240V	480Y /277V	600Y /347V		
KTU9-40H-2D — High Interrupting Capacity – 2-Pole						
0.5	15...20xI _n	100	100	50	KTU9-40H-2D-0.5-DG	L ①
1.0	15...20xI _n	100	100	50	KTU9-40H-2D-1-DG	
2.0	15...20xI _n	100	100	50	KTU9-40H-2D-2-DG	
3.0	15...20xI _n	100	100	50	KTU9-40H-2D-3-DG	
4.0	15...20xI _n	100	100	50	KTU9-40H-2D-4-DG	
5.0	15...20xI _n	100	100	50	KTU9-40H-2D-5-DG	
6.0	15...20xI _n	100	100	50	KTU9-40H-2D-6-DG	
8.0	15...20xI _n	100	100	50	KTU9-40H-2D-8-DG	
10.0	15...20xI _n	100	100	50	KTU9-40H-2D-10-DG	
12.0	15...20xI _n	65	65	25	KTU9-40H-2D-12-DG	
15.0	15...20xI _n	65	65	25	KTU9-40H-2D-15-DG	
20.0	15...20xI _n	65	65	~	KTU9-40H-2D-20-DG	
25.0	15...20xI _n	65	65	~	KTU9-40H-2D-25-DG	
30.0	15...20xI _n	65	65	~	KTU9-40H-2D-30-DG	
35.0	14 x I _n	65	65	~	KTU9-40H-2D-35-DG	
40.0	12 x I _n	65	65	~	KTU9-40H-2D-40-DG	
KTU9-40H-3D — High Interrupting Capacity – 3-Pole						
0.5	15...20xI _n	100	100	50	KTU9-40H-3D-0.5-DG	L ①
1.0	15...20xI _n	100	100	50	KTU9-40H-3D-1-DG	
2.0	15...20xI _n	100	100	50	KTU9-40H-3D-2-DG	
3.0	15...20xI _n	100	100	50	KTU9-40H-3D-3-DG	
4.0	15...20xI _n	100	100	50	KTU9-40H-3D-4-DG	
5.0	15...20xI _n	100	100	50	KTU9-40H-3D-5-DG	
6.0	15...20xI _n	100	100	50	KTU9-40H-3D-6-DG	
8.0	15...20xI _n	100	100	50	KTU9-40H-3D-8-DG	
10.0	15...20xI _n	100	100	50	KTU9-40H-3D-10-DG	
12.0	15...20xI _n	65	65	25	KTU9-40H-3D-12-DG	
15.0	15...20xI _n	65	65	25	KTU9-40H-3D-15-DG	
20.0	15...20xI _n	65	65	~	KTU9-40H-3D-20-DG	
25.0	15...20xI _n	65	65	~	KTU9-40H-3D-25-DG	
30.0	15...20xI _n	65	65	~	KTU9-40H-3D-30-DG	
35.0	14 x I _n	65	65	~	KTU9-40H-3D-35-DG	
40.0	12 x I _n	65	65	~	KTU9-40H-3D-40-DG	



Includes:

- Type 12 enclosure – dusttight
- KTU9 UL489 Molded Case Circuit Breaker
- Black Type 4/4X/12; IP66 handle (Cat.# KT9-HTN) ②

Modifications (Factory Assembled) ③

KT9 Auxiliaries & Trip Contacts - Front Mount 250V max.	Add Suffix to Cat. Number
1 NO Auxiliary	-B
1 NC Auxiliary	-A
1 NO + 1 NC Auxiliary	-C
2 NO Auxiliaries	-D
1 NO SC+OL + 1 NC Auxiliary	-R
1 NO SC+OL + 1 NO Auxiliary	-S

① KTU9 is 80% rated in this enclosure.

② A red and yellow handle may be selected instead of the standard black handle. Change “DG” suffix to “DJ”. Ex: Change KTU9-40H-2D-0.16-DG to KTU9-D-2D-0.16-DJ.

③ Load Terminal Cover KT9-PEFC is included with any factory modifications.

Enclosed KTU9 Circuit Breaker - Type 4 / 12

Amp / Interrupt Rating					Painted Steel, Type 4 / 12 Enclosure	
Fixed Thermal Current Rating [A]	Magnetic Trip [A]	Interrupting Rating (60Hz) [KA]			Catalog Number	Dimension Code
		240V	480Y /277V	600Y /347V		
KTU9-40H-2D — High Interrupting Capacity – 2-Pole						
0.5	15...20xI _n	100	100	50	KTU9-40H-2D-0.5-WG	W6 ①
1.0	15...20xI _n	100	100	50	KTU9-40H-2D-1-WG	
2.0	15...20xI _n	100	100	50	KTU9-40H-2D-2-WG	
3.0	15...20xI _n	100	100	50	KTU9-40H-2D-3-WG	
4.0	15...20xI _n	100	100	50	KTU9-40H-2D-4-WG	
5.0	15...20xI _n	100	100	50	KTU9-40H-2D-5-WG	
6.0	15...20xI _n	100	100	50	KTU9-40H-2D-6-WG	
8.0	15...20xI _n	100	100	50	KTU9-40H-2D-8-WG	
10.0	15...20xI _n	100	100	50	KTU9-40H-2D-10-WG	
12.0	15...20xI _n	65	65	25	KTU9-40H-2D-12-WG	
15.0	15...20xI _n	65	65	25	KTU9-40H-2D-15-WG	
20.0	15...20xI _n	65	65	~	KTU9-40H-2D-20-WG	
25.0	15...20xI _n	65	65	~	KTU9-40H-2D-25-WG	
30.0	15...20xI _n	65	65	~	KTU9-40H-2D-30-WG	
35.0	14 x I _n	65	65	~	KTU9-40H-2D-35-WG	
40.0	12 x I _n	65	65	~	KTU9-40H-2D-40-WG	
KTU9-40H-3D — High Interrupting Capacity – 3-Pole						
0.5	15...20xI _n	100	100	50	KTU9-40H-3D-0.5-WG	W6 ①
1.0	15...20xI _n	100	100	50	KTU9-40H-3D-1-WG	
2.0	15...20xI _n	100	100	50	KTU9-40H-3D-2-WG	
3.0	15...20xI _n	100	100	50	KTU9-40H-3D-3-WG	
4.0	15...20xI _n	100	100	50	KTU9-40H-3D-4-WG	
5.0	15...20xI _n	100	100	50	KTU9-40H-3D-5-WG	
6.0	15...20xI _n	100	100	50	KTU9-40H-3D-6-WG	
8.0	15...20xI _n	100	100	50	KTU9-40H-3D-8-WG	
10.0	15...20xI _n	100	100	50	KTU9-40H-3D-10-WG	
12.0	15...20xI _n	65	65	25	KTU9-40H-3D-12-WG	
15.0	15...20xI _n	65	65	25	KTU9-40H-3D-15-WG	
20.0	15...20xI _n	65	65	~	KTU9-40H-3D-20-WG	
25.0	15...20xI _n	65	65	~	KTU9-40H-3D-25-WG	
30.0	15...20xI _n	65	65	~	KTU9-40H-3D-30-WG	
35.0	14 x I _n	65	65	~	KTU9-40H-3D-35-WG	
40.0	12 x I _n	65	65	~	KTU9-40H-3D-40-WG	



Includes:

- Type 4/12 enclosure – watertight, dusttight
- KTU9 UL489 Molded Case Circuit Breaker
- Black Type 4/4X/12; IP66 handle (Cat.# KT9-HTN) ②

Modifications (Factory Assembled) ③

KT9 Auxiliaries & Trip Contacts - Front Mount 250V max.	Add Suffix to Cat. Number
1 NO Auxiliary	-B
1 NC Auxiliary	-A
1 NO + 1 NC Auxiliary	-C
2 NO Auxiliaries	-D
1 NO SC+OL + 1 NC Auxiliary	-R
1 NO SC+OL + 1 NO Auxiliary	-S

① KTU9 up to 15 Amp is 100% rated in this enclosure. KTU9 20...30 Amp is 80% rated.
 ② A red and yellow handle may be selected instead of the standard black handle. Change "WG" suffix to "WJ". Ex: Change KTU9-40H-2D-0.16-WG to KTU9-40H-2D-0.16-WJ.
 ③ Load Terminal Cover KT9-PEFC is included with any factory modifications.

F Enclosed Molded Case Circuit Breakers