

KT9 Assembly – Application Rating Chart (Ratings are dependent on type of application) ①

KT9	UL 60947-4-1						UL Type 4-1 Type F		
	Max. Fuse or Circuit Breaker per NEC [A]	Minimum Contactor Size	Group Motor Installation		Motor Disconnect		Combination Motor Controller		
			Max. Short-Circuit Current [kA]		Max. Short-Circuit Current [kA]		Minimum Contactor Size	Max. Short-Circuit Current [kA]	
			480V	600V	480V	600V		480Y/277V ①	600Y/347V ①
KTA9-32S + CA7 UL Assemblies (CLE) / (14 x In)									
KTA9-32S-0.16A	450	CA7-9	65	50	65	50	CA7-9	65	50
KTA9-32S-0.25A	450	CA7-9	65	50	65	50	CA7-9	65	50
KTA9-32S-0.40A	450	CA7-9	65	50	65	50	CA7-9	65	50
KTA9-32S-0.63A	450	CA7-9	65	50	65	50	CA7-9	65	50
KTA9-32S-1.0A	450	CA7-9	65	50	65	50	CA7-9	65	50
KTA9-32S-1.6A	450	CA7-9	65	50	65	50	CA7-9	65	50
KTA9-32S-2.5A	450	CA7-9	65	30	65	30	CA7-9	65	30
KTA9-32S-4.0A	450	CA7-9	65	30	65	30	CA7-9	65	30
KTA9-32S-6.3A	450	CA7-9	65	30	65	30	CA7-9	65	~
KTA9-32S-10A	450	CA7-9	65	30	65	30	CA7-9	65	~
KTA9-32S-16A	450	CA7-12	30	30	30	30	CA7-12	30	~
KTA9-32S-20A	450	CA7-23	30	30	30	10	~	~	~
KTA9-32S-25A	450	CA7-23	30	18	10	5	~	~	~
KTA9-32S-25A	450	CA7-30	30	18	30	5	~	~	~
KTA9-32S-29A	450	CA7-30	30	10	10	~	~	~	~
KTA9-32S-32A	450	CA7-37	30	10	10	~	~	~	~
KTA9-40H + CA7 UL Assemblies (CLE) / (14 x In)									
KTA9-40H-0.63A	450	CA7-9	65	50	65	50	CA7-9	65	50
KTA9-40H-1.0A	450	CA7-9	65	50	65	50	CA7-9	65	50
KTA9-40H-1.6A	450	CA7-9	65	50	65	50	CA7-9	65	50
KTA9-40H-2.5A	450	CA7-9	65	30	65	30	CA7-9	65	30
KTA9-40H-4.0A	450	CA7-9	65	30	65	30	CA7-9	65	30
KTA9-40H-6.3A	450	CA7-9	65	30	65	30	CA7-9	65	30
KTA9-40H-10A	450	CA7-9	65	30	65	30	CA7-9	65	30
KTA9-40H-16A	450	CA7-12	65	30	65	30	CA7-12	65	30
KTA9-40H-20A	450	CA7-23	65	30	65	30	CA7-23	65	~
KTA9-40H-25A	450	CA7-23	50	30	50	30	CA7-23	50	~
KTA9-40H-29A	450	CA7-30	50	30	50	30	CA7-30	50	~
KTA9-40H-32A	450	CA7-37	50	30	50	18	CA7-37	30	~
KTA9-40H-36A	450	CA7-37	30	30	30	18	CA7-37	30	~
KTA9-40H-40A	450	CA7-37	30	30	30	18	CA7-37	30	~
KTA7-45H + CA7 UL Assemblies (CLE) / (13 x In)									
KTA7-45H-10A	600	CA7-30	65	30	65	30	CA7-30	65	30
KTA7-45H-16A	600	CA7-30	65	30	65	30	CA7-30	65	30
KTA7-45H-20A	600	CA7-30	65	30	65	30	CA7-30	65	30
KTA7-45H-25A	600	CA7-30	65	30	65	30	CA7-30	65	30
KTA7-45H-32A	600	CA7-30	65	30	65	30	CA7-30	65	30
KTA7-45H-45A	600	CA7-37	65	18	65	18	CA7-37	65	~

① The ratings in these tables assume connection between components are made with Sprecher + Schuh Connection Modules. Engineering Practice allows wire connection as an alternative.

UL 60947 Application Ratings, MPCBs' with Series CA8 Contactors

KT9	UL 60947-4-1						UL Type 4-1 Type F		
	Max. Fuse or Circuit Breaker per NEC [A]	Minimum Contactor Size	Group Motor Installation		Motor Disconnect		Combination Motor Controller		
			Max. Short-Circuit Current [kA]		Max. Short-Circuit Current [kA]		Minimum Contactor Size	Max. Short-Circuit Current [kA]	
			480V	600V	480V	600V		480Y/277V ①	600Y/347V ①
KTA9-32S + CA8 UL Assemblies (CLE) / (14 x In)									
KTA9-32S-0.16A	450	CA8-09	65	47	65	50	CA8-09	65	30
KTA9-32S-0.25A	450	CA8-09	65	47	65	50	CA8-09	65	30
KTA9-32S-0.40A	450	CA8-09	65	47	65	50	CA8-09	65	30
KTA9-32S-0.63A	450	CA8-09	65	47	65	50	CA8-09	65	30
KTA9-32S-1.0A	450	CA8-09	65	47	65	50	CA8-09	65	30
KTA9-32S-1.6A	450	CA8-09	65	47	65	50	CA8-09	65	30
KTA9-32S-2.5A	450	CA8-09	65	47	65	30	CA8-09	65	30
KTA9-32S-4.0A	450	CA8-09	65	30	65	30	CA8-09	65	30
KTA9-32S-6.3A	450	CA8-09	65	30	65	30	CA8-09	65	50
KTA9-32S-10A	450	CA8-09	65	30	65	30	CA8-09	65	50
KTA9-32S-16A	450	CA8-12	30	30	30	30	CA8-12	65	50
KTA9-40H + CA8 UL Assemblies (CLE) / (14 x In)									
KTA9-40H-0.63A	450	CA8-09	65	50	65	50	~	65	30
KTA9-40H-1.0A	450	CA8-09	65	50	65	50	~	65	30
KTA9-40H-1.6A	450	CA8-09	65	50	65	50	~	65	30
KTA9-40H-2.5A	450	CA8-09	65	30	65	30	~	65	30
KTA9-40H-4.0A	450	CA8-09	65	30	65	30	~	65	30
KTA9-40H-6.3A	450	CA8-09	65	30	65	30	~	65	50
KTA9-40H-10A	450	CA8-09	65	30	65	30	~	65	50
KTA9-40H-16A	450	CA8-12	65	30	65	30	~	65	50

UL 60947 Application Ratings, MPCBs' with Series CA7 Contactors

KT9	UL 60947-4-1					
	Max. Fuse or Circuit Breaker per NEC [A]	Minimum Contactor Size	Group Motor Installation		Motor Disconnect	
			Max. Short-Circuit Current [kA]		Max. Short-Circuit Current [kA]	
			480V	600V	480V	600V
KT9-40H + CA7 UL Assemblies (CLE) / (14 x In)						
KT9-40H-0.16A	450	CA7-9	65	50	65	50
KT9-40H-0.25A	450	CA7-9	65	50	65	50
KT9-40H-0.40A	450	CA7-9	65	50	65	50
KT9-40H-0.63A	450	CA7-9	65	50	65	50
KT9-40H-1.0A	450	CA7-9	65	50	65	50
KT9-40H-1.6A	450	CA7-9	65	50	65	50
KT9-40H-2.5A	450	CA7-9	65	30	65	30
KT9-40H-4.0A	450	CA7-9	65	30	65	30
KT9-40H-6.3A	450	CA7-9	65	30	65	30
KT9-40H-10A	450	CA7-9	65	30	65	30
KT9-40H-16A	450	CA7-12	65	30	65	30
KT9-40H-20A	450	CA7-23	65	30	65	30
KT9-40H-25A	450	CA7-23	50	30	50	30
KT9-40H-29A	450	CA7-30	50	30	50	30
KT9-40H-32A	450	CA7-37	50	30	30	18
KT9-40H-36A	450	CA7-37	30	30	30	18
KT9-40H-40A	450	CA7-37	30	30	30	18
KT9-45H + CA7 UL Assemblies (CLE) / (14 x In)						
KT9-45H-25A	600	CA7-23	65	30	65	30
KT9-45H-32A	600	CA7-30	65	30	65	30
KT9-45H-45A	600	CA7-37	65	18	65	18

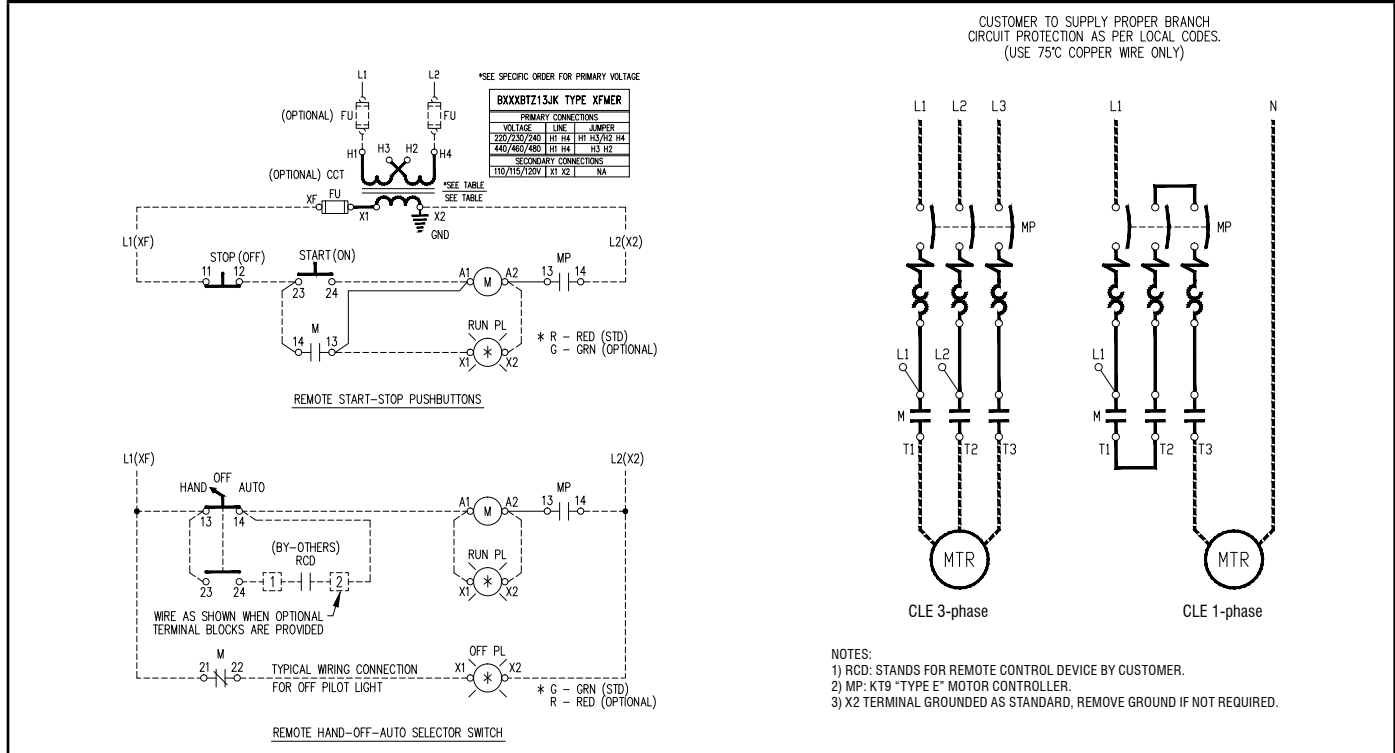
① The ratings in these tables assume connection between components are made with Sprecher + Schuh Connection Modules. Engineering Practice allows wire connection as an alternative.

Type 2 Coordination Ratings, MPCBs' with Series CA7 Contactors

Cat. No.			400V		480V		600V	
Standard Motor Protection	High Inrush Motor Protection	Motor Circuit Protection	Max. Short-Circuit Current [kA]	Max. Short-Circuit Current [kA]	Max. Short-Circuit Current [kA]	Minimum Contactor Size	Max. Short-Circuit Current [kA]	Minimum Contactor Size
KTA9-32S + CA7 UL Assemblies (CLE) / (14 x In)								
KTA9-32S-0.16A	~	~	100	CA7-9	~	~	~	~
KTA9-32S-0.25A	~	~	100	CA7-9	~	~	~	~
KTA9-32S-0.40A	~	~	100	CA7-9	~	~	~	~
KTA9-32S-0.63A	~	~	100	CA7-9	~	~	~	~
KTA9-32S-1.0A	~	~	100	CA7-9	~	~	~	~
KTA9-32S-1.6A	~	~	100	CA7-9	~	~	~	~
KTA9-32S-2.5A	~	~	65	CA7-23	~	~	~	~
KTA9-32S-4.0A	~	~	65	CA7-23	~	~	~	~
KTA9-32S-6.3A	~	~	65	CA7-23	~	~	~	~
KTA9-32S-10A	~	~	65	CA7-23	~	~	~	~
KTA9-32S-16A	~	~	50	CA7-30	~	~	~	~
KTA9-32S-20A	~	~	50	CA7-30	~	~	~	~
KTA9-32S-25A	~	~	15	CA7-30	~	~	~	~
KTA9-32S-29A	~	~	15	CA7-30	~	~	~	~
KTA9-32S-32A	~	~	15	CA7-30	~	~	~	~
KT_9-40H + CA7 UL Assemblies (CLE) / (14 x In)								
KTA9-40H-0.63A	~	~	100	CA7-9	~	~	~	~
KTA9-40H-1.0A	KTC9-40H-0.63A	KTB9-40H-1.0A	100	CA7-9	~	~	~	~
KTA9-40H-1.6A	KTC9-40H-1.0A	KTB9-40H-1.6A	100	CA7-9	~	~	~	~
KTA9-40H-2.5A	KTC9-40H-1.6A	KTB9-40H-2.5A	100	CA7-9	~	~	~	~
KTA9-40H-4.0A	KTC9-40H-2.5A	KTB9-40H-4.0A	65	CA7-9	~	~	~	~
KTA9-40H-6.3A	KTC9-40H-4.0A	KTB9-40H-6.3A	65	CA7-9	~	~	~	~
KTA9-40H-10A	KTC9-40H-6.3A	KTB9-40H-10A	65	CA7-9	~	~	~	~
KTA9-40H-16A	KTC9-40H-10A	KTB9-40H-16A	65	CA7-23	~	~	~	~
KTA9-40H-20A	KTC9-40H-16A	KTB9-40H-20A	65	CA7-23	~	~	~	~
KTA9-40H-25A	KTC9-40H-20A	KTB9-40H-25A	50	CA7-23	~	~	~	~
KTA9-40H-29A	KTC9-40H-25A	KTB9-40H-29A	65	CA7-30	~	~	~	~
KTA9-40H-32A	KTC9-40H-29A	KTB9-40H-32A	65	CA7-30/37	~	~	~	~
KTA9-40H-36A	KTC9-40H-32A	~	65	CA7-30/37	~	~	~	~
KTA9-40H-40A	KTC9-40H-36A	KTB9-40H-40A	65	CA7-30/37	~	~	~	~
KT_7-45H + CA7 UL Assemblies (CLE) / (13 x In)								
KTA7-45H-10A	~	~	100	CA7-9	65	CA7-9	30	CA7-30
KTA7-45H-16A	~	~	100	CA7-12	65	CA7-12	30	CA7-30
KTA7-45H-20A	~	~	100	CA7-23	65	CA7-23	30	CA7-30
KTA7-45H-25A	~	KTB7-45H-25A	100	CA7-30	65	CA7-30	30	CA7-30
KTA7-45H-32A	KTC7-45H-25A	KTB7-45H-32A	100	CA7-30	65	CA7-30	30	CA7-30
KTA7-45H-45A	KTC7-45H-32A	KTB7-45H-45A	100	CA7-37	65	CA7-37	30	CA7-37

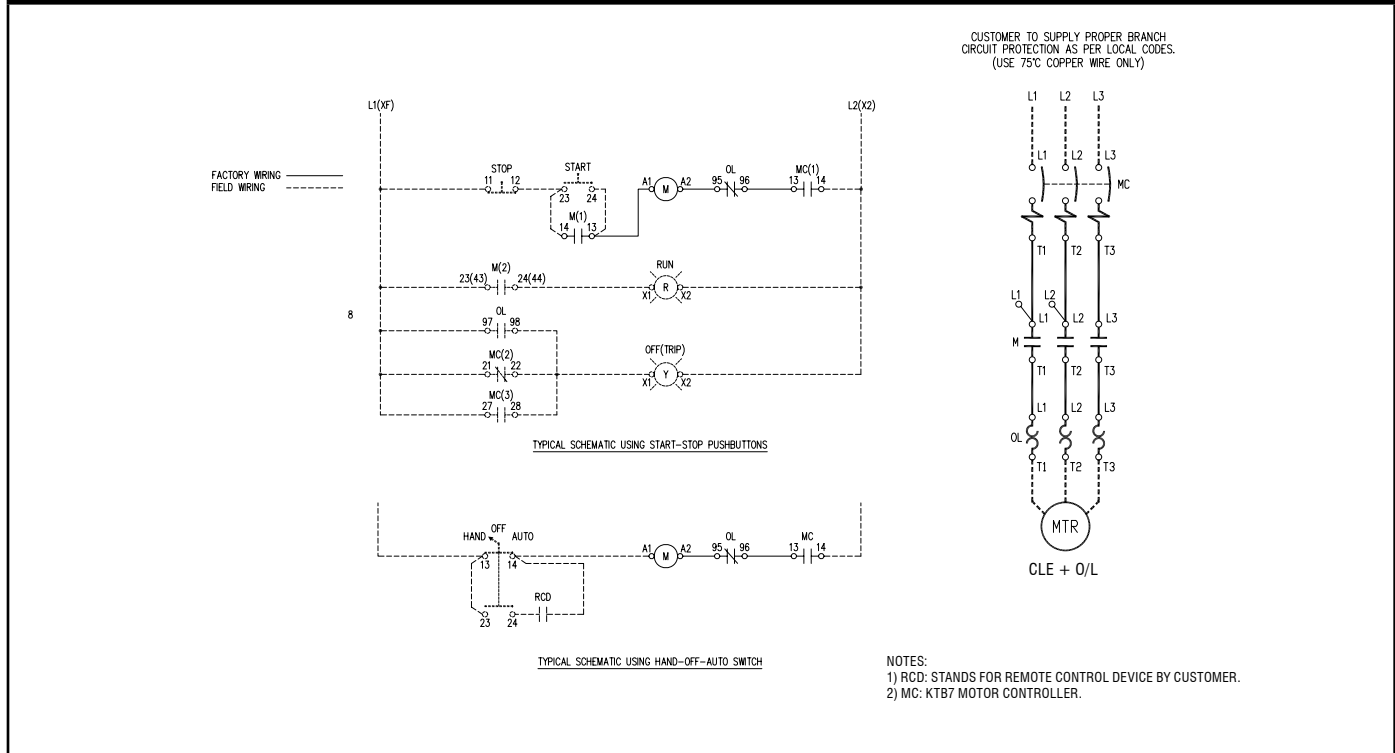
2-Component ECombo Starters

CLE Non-Reversing Typical Diagram



3-Component ECombo Starters

CLE + O/L Non-Reversing Typical Diagram



ECombo Circuit Controllers

