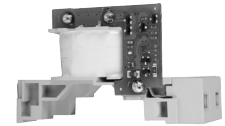
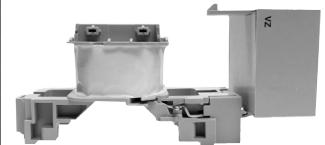


Renewal Coils - D.C. ①②

DC Control Voltages	DC Coil Codes ②	Electronic DC Replacement Coils ③				Two Winding DC Replacement Coils	
		For use with contactor...				For use with contactor...	
		CA7-9E...16E CA7-9E-M... 16E-M... CAN7-12E...16E	CA7-23E...37E CA7-23E-M... CAN7-37E	CA7-43E...55E CA7-40E-M... CAN7-43E (Series A)	CA7-43E...55E CA7-40E-M... CAN7-43E (Series B)	CA7-60D...85D ⑤ CNX7-218 CAN7-85D	CA7-97D ⑤ CA7-90D-M...
Cat. No.	Cat. No.	Cat. No.	Cat. No.	Cat. No.	Cat. No.		
9V Diode ③	9DD	~	~	~	~	TE766M	TF766M
12V Electronic	12E	TC708E	TC708E	TD708E	TD708E2	~	~
12V Diode	12DD	~	~	~	~	TE708M	TF708M
24V Electronic	24E	TC714E	TC714E	TD714E	TD714E2	~	~
24V Diode ④	24DD	~	~	~	~	TE714M	TF714M
36-48V Elec	36E	TC719E	TC719E	TD719E	TD719E2	~	~
36V Diode	36DD	~	~	~	~	TE719M	TF719M
48-72V Elec	48E	TC724E	TC724E	TD724E	TD724E2	~	~
48V Diode	48DD	~	~	~	~	TE724M	TF724M
60V Diode	60DD	~	~	~	~	TE774M	TF774M
64V Diode	64DD	~	~	~	~	TE727M	TF727M
72V Diode	72DD	~	~	~	~	TE728M	TF728M
80V Diode	80DD	~	~	~	~	TE729M	TF729M
110-125V Elec	110E	TC733E	TC733E	TD733E	TD733E2	~	~
110V Diode	110DD	~	~	~	~	TE733M	TF733M
115V Diode	115DD	~	~	~	~	TE734M	TF734M
125V Diode	125DD	~	~	~	~	TE737M	TF737M
220-250V Elec	220E	TC747E	TC747E	TD747E	TD747E2	~	~
220V Diode	220DD	~	~	~	~	TE747M	TF747M
230V Suppres.	230DS	~	~	~	~	TE749F	TF749F
250V Suppres.	250DS	~	~	~	~	TE751F	TF751F
Price (coil with diode)		146.15	146.15	146.15	146.15	179.87	179.87



12V & 24V Electronic DC coil



36V...220V Electronic DC coil with Back Pack



Two Winding DC coil (typical) ⑤

Note: The “DD” coils listed above include an integrated bidirectional diode. Drop out time of this design is significantly improved when compared to an external diode. See ratings on page A69.

- ① Other coil voltages and coils for obsolete products may be available. Contact your Sprecher + Schuh representative for information.
- ② DC Codes in bold letters and shaded indicate coils that are standard stocked items.
- ③ Voltage operating range: $0.65 \dots 1.3 \times U_s$
- ④ Voltage operating range: $0.7 \dots 1.25 \times U_s$
- ⑤ CA7-60D...97D contactors have a two winding coil with built-in late break auxiliary contact and coil suppression.
- ⑥ CA7-9E...55E electronic coils are not interchangeable with non-electronic DC or AC coils