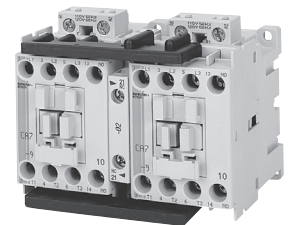
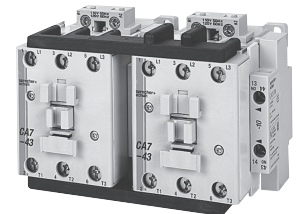


Reversing, Three Pole Contactors With AC Coil, Series CAU7 (Open type only)

I _e [A]		Ratings for Switching AC Motors (AC2 / AC3 / AC4)										Auxiliary Contacts per Contactor		Open Type			
		kW (50 Hz)				UL/CSA HP (60 Hz)											
		AC-3	AC-1	400V		500V	690V	1 Ø			3 Ø						
230V	415V			115V	230V			200V	230V	460V	575V	NO	NC ⑤				
9	32	3	4	4	4	1/2	1 1/2	2	2	5	7-1/2	1	1	CAU7-9-22-*	332.72		
12	32	4	5.5	5.5	5.5	1/2	2	3	3	7-1/2	10	1	1	CAU7-12-22-*	402.17		
16	32	5.5	7.5	7.5	7.5	1	3	5	5	10	15	1	1	CAU7-16-22-*	443.63		
23	32	7.5	11	13	10	2	3	5	7-1/2	15	15	1	1	CAU7-23-22-*	483.01		
30	65	10	15	15	15	2	5	7-1/2	10	20	25	0	1	CAU7-30-02-*	547.28		
												1 ④	1	CAU7-30-22-*	587.70		
37	65	11	18.5/20	20	8.5	3	5	10	10	25	30	0	1	CAU7-37-02-*	630.20		
												1 ④	1	CAU7-37-22-*	658.19		
43	85	13	22	25	22	3	7-1/2	10	15	30	30	0	1	CAU7-43-02-*	674.77		
												1 ④	1	CAU7-43-22-*	715.19		
55	85	15	30	30	22	5	10	15	20	40	40	0	1	CAU7-55-02-*	773.24		
												1 ④	1	CAU7-55-22-*	813.66		
60	100	18.5	32	37	32	5	10	15	20	40	50	0	1	CAU7-60-02-*	884.15		
												1 ④	1	CAU7-60-22-*	924.57		
72	100	22	40	45	40	5	15	20	25	50	60	0	1	CAU7-72-02-*	1002.30		
												1 ④	1	CAU7-72-22-*	1046.88		
85	100	25	45	55	45	7-1/2	15	25	30	60	60	0	1	CAU7-85-02-*	1191.99		
												1 ④	1	CAU7-85-22-*	1233.45		
97	130	30	55	55	55	10	20	30	30	75	75	0	1	CAU7-97-02-*	1637.69		
												1 ④	1	CAU7-97-22-*	1679.15		



CAU7-9-22-120 reversing contactor



CAU7-43-22-120 reversing contactor

Includes:

- Line side coil terminations
- Mechanical and electrical Interlock ⑤
- Reversing power wiring ① (using Power Wiring Kit Cat.# CAU7-PW...)
- Control wiring available; see footnote ②

Coil Codes ⑥

AC Coil Code	Voltage Range	
	50 Hz	60 Hz
24Z	24V	24V
120	110V	120V
208	~	208V
220W	~	208V - 240V
240	220V	240V
277	240V	277V
380	380V-400V	440V
480	440V	480V
600	550V	600V

① For -LW Option Deduct the following from List Price	
CAU7-9...23	10.36
CAU7-30...37	12.44
CAU7-43...55	22.80
② For -CW Option Add the following to List Price	
CAU7-9...97	20.73

Ordering Instructions

Specify Catalog Number	
Replace (*) with Coil Code	See Coil Codes on this page.

- ① For Reversing Contactors *without* power wiring add suffix “-LW” to catalog number. For example: CAU7-9-22-* becomes CAU7-9-22-*-LW. CAU7-60...97 not available without power wiring.
- ② For control wiring, add suffix -CW to catalog number. Example: CAU7-9-22-* becomes CAU7-9-22-*-CW.
- ③ The NC auxiliary contacts are supplied as part of the mechanical interlock (Cat.# CM7-02) and are used to electrically interlock the contactors.
- ④ The NO auxiliary contacts supplied are side mounted. Top mount NO auxiliary contacts must be special ordered. Contact your Sprecher+Schuh representative.
- ⑤ Other voltages available, see page A56.