



The variety of R Series Plug-In Relays offered by Relpol S.A.® provides dependable, economical solutions for a range of control applications. A flexible solution suitable for virtually any application is the R2N/R4N relay. For the tube-base market, there is the rugged R15 relay. For higher current applications, there is the square-base RUC relay and the more compact RY2 blade-style relay. Each model is offered in ten coil voltages.

Two types of Interface Relays offer current capabilities from 6 to 16 amps. The Relpol S.A.® PI84/PI85 Interface PCB Relays offer a unique design for high current applications.

Rugged and reliable

The entire R Series is built for dependability and longevity. Equipped with either silver nickel or silver tin oxide contacts, these hearty relays can accommodate currents as low as 10mA @10V, or 5mA @5V respectively. Contacts have a mechanical life of 20 million cycles, and provide high switching capacity.

Convenient features

Each R Series relay has a mechanical “flag” and one piece “push-to-test” button and latching lever. The button permits momentary testing of relay contacts, while the lever allows relay contacts to remain closed for longer testing periods until released to normal. These features, standard on every Relpol S.A.® R Series relay offered by Sprecher + Schuh, save time and labor when troubleshooting control circuitry. An optional LED position indicator shows whether the relay is energized, and whether the contacts have changed state.

DIN-rail mounted industrial relay sockets

R Series relays feature slim, IEC-type sockets which can be DIN-rail mounted or fixed directly to the panel with screws. Pin numbers are clearly identified for easy installation and maintenance. Relays can be quickly and easily fastened to the sockets. Optional retainer clips provide additional security in high vibration environments.

Safety approvals

The R Series from Relpol S.A.® meets a number of international approvals, which vary based on the relay type. International and domestic approvals include UL recognized, CE marked, and CSA and VDE certified, cULus & cUL recognized, and all are RoHS compatible.



Plug-in Ice cube Power Relays

Built-in LEDs
Coil Voltage
6 - 110VDC
6 - 240 VAC

Miniature R2N/R4N in GZT Socket

- 2- and 4-pole
- R2N - 12A DPDT R4N - 6A 4PDT
- Mechanical flag indicator
- Push-to-test/ Latching lever
- Silver Nickle contacts
- Bi-polar DC coils
- **RoHS**

2-pole R15 in PZ8 Socket

- 10A DPDT
- Push-to-test/Latching lever
- Bi-polar DC coils
- **RoHS**

3-pole R15 in PZ11 Socket

- 10A DPDT
- Push-to-test/Latching lever
- Silver Nickle contacts
- Bi-polar DC coils
- **RoHS**

RUC in SB11 Socket

- 15A DPDT / 10A 3PDT
- 2- and 3-pole
- Silver Tin Oxide contacts
- **RoHS**

RY2 in SB08 Socket

- 12A DPDT
- 2-pole
- Silver Nickle contacts
- Bi-polar DC coils
- **RoHS**

DIN Mounted

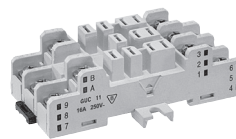
- IEC-type sockets
- Easy installation



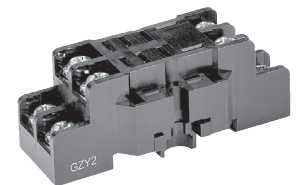
Sockets



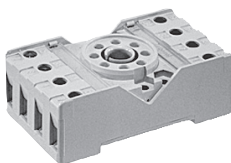
GZT2/GZT4 Socket with GZT4-0040S retainer clip
For R2N and R4N Miniature power plug-in relays.



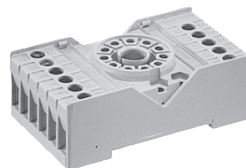
SB11 Socket
Screw Terminal, Square Base Blade type Socket for RUC relays



SB08 Socket
Screw Terminal, Square Base Blade type Socket for RY2 relays.



PZ8 Socket
Screw Terminal, Reapol Tube Base 8-PIN Socket for R15 relays

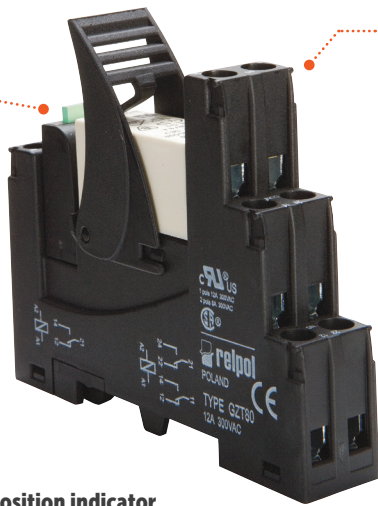


PZ11 Socket
Screw Terminal, Reapol Tube Base 11-PIN Socket for R15 relays

Contact your Sprecher + Schuh representative for complete product information.

Interfaces

The Relpol® PI84/PI85 Interface PCB Relays offer a unique design for high current applications. The low current input and power consumption with load capabilities of high current switching is ideal for limited input sources and panel space savings.



PI84 / P185 Interface PCB Relay

- PI84 - 8A DPDT
- PI85 - 16A SPDT
- Protective module
- Silver Nickle Contacts
- Replacement Relays available
- Coil Voltage:
12 VDC
24 VAC/DC
120 VAC

LED position indicator

A full featured model in one small package

The PI84/PI85 Interface PCB relays are offered as a complete package which includes the following five factory installed pieces:

1. PCB (Printed Circuit Board module)
2. Relay socket
3. LED position indicator
4. Retainer clip
5. Description plate

Rugged and reliable

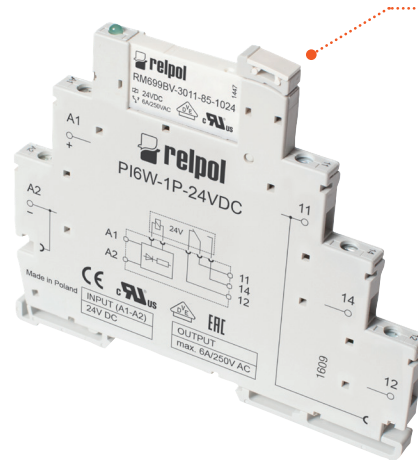
With a mechanical life of 20 million cycles, and high contact switching capacity due to their hard nickel cadmium contacts, the PI84/PI85 Interface PCB relays provides long lasting high quality contact reliability even after millions of operations.

DIN-rail mounted relay sockets

The PI84/PI85 Interface relay DIN-mounted sockets offer a slim space savings design. The relay socket includes a retainer clip to firmly hold the PCB relay and a description plate as standard.

Terminal Block Relays

The Relpol® PIR6W Slim Interface Terminal Block Relay is ideally compact, designed for a variety of high-density isolation and interposing applications.



Slim Interface Terminal Block Relay

- 6A SPDT
- 1-Pole SPDT
- Silver Tin Oxide Contacts
- Change over relay with built-in LED Indicator
- Coil Voltage:
12 VDC
24 VDC
24 VAC/DC
115VAC/DC
- Replacement Relays available

Low input current, high switching capabilities

The PIR6W Slim Interface Relays are offered as a complete package which includes the following:

1. Changeover relay, rated load
6 A / 230 V (ACI)
2. Interface Relay socket with built-in LED position indicator
3. Description plate

The PIR6W Slim Interface Relay contacts are rated at 6 amps resistive @230VAC and available in SPDT (1 form - C contact). The minimum contact current capabilities are 100mA at 24V. The coil power consumption is approximately 0.3...0.8VA AC or 0.3...0.9W DC. The PIR6W Interface Relays are available in 24V DC, 24V AC/DC and 120V models.

Rugged and reliable

With a mechanical life of 20 million cycles, and high contact switching capacity due to their silver tin oxide (AgSnO₂) contacts, the PIR6W Interface Relays provides long lasting high quality contact reliability even after millions of operations.

DIN-rail mounted

The PIR6W Slim Interface Relays are DIN-rail mountable which can be easily installed along side other control terminal blocks for a space saving design.

R2N 2 Pole (2 Form C) Miniature Blade Type ①



8pin, 12Amp
DPTDT, 2 pole
(2 Form C)
AgNi Contacts

Features	Catalog Number	Coil Voltage
Indicating Flag Electrical LED	R2N-2012-23-1006-WTL	6VDC
	R2N-2012-23-1012-WTL	12VDC
Push-to-test/ Latching Lever as standard	R2N-2012-23-1024-WTL	24VDC
	R2N-2012-23-1048-WTL	48VDC
Built-in LED	R2N-2012-23-1110-WTL	110VDC
	R2N-2012-23-5006-WTL	6VAC
Bi-polar input for DC versions	R2N-2012-23-5012-WTL	12VAC
	R2N-2012-23-5024-WTL	24VAC
	R2N-2012-23-5120-WTL	120VAC
	R2N-2012-23-5240-WTL	240VAC

Socket Accessories for 14 Blade, R2N Relays



Screw Terminal,
Relpol Miniature
Blade-Type Socket
for R2N relays

GZT2

R4N 4 Pole (4 Form C) Miniature Blade Type ①



8pin, 6Amp
4PDT, 4 pole
(4 Form C)
AgNi Contacts

Features	Catalog Number	Coil Voltage
Indicating Flag Electrical LED	R4N-2014-23-1006-WTL	6VDC
	R4N-2014-23-1012-WTL	12VDC
Push-to-test/ Latching Lever as standard	R4N-2014-23-1024-WTL	24VDC
	R4N-2014-23-1048-WTL	48VDC
Built-in LED	R4N-2014-23-1110-WTL	110VDC
	R4N-2014-23-5006-WTL	6VAC
Bi-polar input for DC versions	R4N-2014-23-5012-WTL	12VAC
	R4N-2014-23-5024-WTL	24VAC
	R4N-2014-23-5120-WTL	120VAC
	R4N-2014-23-5240-WTL	240VAC

R4N 4 Pole (4 Form C) Miniature Blade Type, Low Level Applications ①



14pin, 6Amp
4PDT, 4 pole
(4 Form C)
AgNi/Au Gold Plated
Contacts 2mA 5V

Features	Catalog Number	Coil Voltage
Indicating Flag Electrical LED	R4N-2314-23-1006-WTL	6VDC
	R4N-2314-23-1012-WTL	12VDC
Push-to-test/ Latching Lever as standard	R4N-2314-23-1024-WTL	24VDC
	R4N-2314-23-1048-WTL	48VDC
Built-in LED	R4N-2314-23-1110-WTL	110VDC
	R4N-2314-23-5006-WTL	6VAC
Bi-polar input for DC versions	R4N-2314-23-5012-WTL	12VAC
	R4N-2314-23-5024-WTL	24VAC
	R4N-2314-23-5120-WTL	120VAC
	R4N-2314-23-5240-WTL	240VAC

Socket Accessories for 14 Blade, R4N Relays



Screw Terminal,
Relpol Miniature
Blade-Type Socket
for R4N relays

GZT4

R15 2 Pole (2 Form C) Tube Base 8-Pin Type ①



8pin, 10Amp
DPDT, 2 pole
(2 Form C) AgNi
Contacts

Features	Catalog Number	Coil Voltage
Indicating Flag Electrical LED	R15-2012-23-1006-WTL	6VDC
	R15-2012-23-1012-WTL	12VDC
Push-to-test/ Latching Lever as standard	R15-2012-23-1024-WTL	24VDC
	R15-2012-23-1048-WTL	48VDC
Built-in LED	R15-2012-23-1110-WTL	110VDC
	R15-2012-23-5006-WTL	6VAC
Bi-polar input for DC versions	R15-2012-23-5012-WTL	12VAC
	R15-2012-23-5024-WTL	24VAC
	R15-2012-23-5120-WTL	120VAC
	R15-2012-23-5240-WTL	240VAC

Socket Accessories for 8pin, R15 Relays



Screw Terminal,
Tube Base 8-PIN
Socket for R15 relays

PZ8

R15 3 Pole (3 Form C) Tube Base 11-Pin Type ①



11pin, 10Amp
3PDT, 3 pole
(3 Form C) AgNi
Contacts

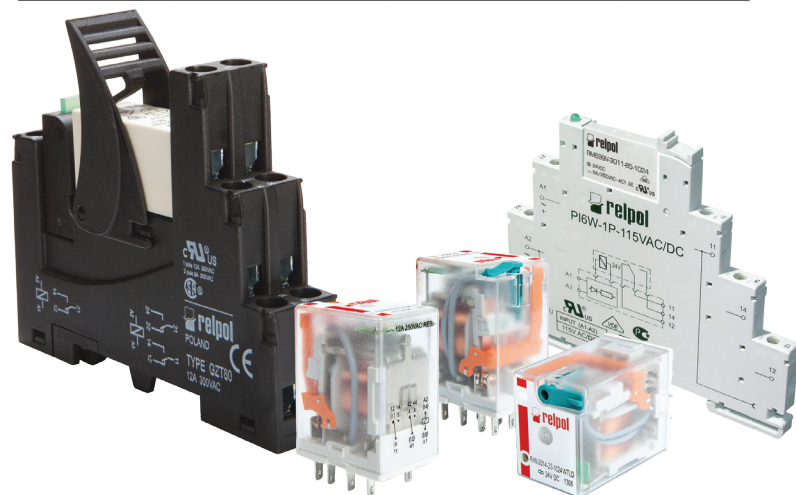
Features	Catalog Number	Coil Voltage
Indicating Flag Electrical LED	R15-2013-23-1006-WTL	6VDC
	R15-2013-23-1012-WTL	12VDC
Push-to-test/ Latching Lever as standard	R15-2013-23-1024-WTL	24VDC
	R15-2013-23-1048-WTL	48VDC
Built-in LED	R15-2013-23-1110-WTL	110VDC
	R15-2013-23-5006-WTL	6VAC
Bi-polar input for DC versions	R15-2013-23-5012-WTL	12VAC
	R15-2013-23-5024-WTL	24VAC
	R15-2013-23-5120-WTL	120VAC
	R15-2013-23-5240-WTL	240VAC

Socket Accessories for 11pin, R15 Relays



Screw Terminal, Relpol
Tube Base 11-PIN Socket
for R15 relays

PZ11



① The standard features of "Push-to-test/Latching" lever can be easily removed and plugged with an accessory plug or push-to-test only button.

RY2 2 Pole (2 Form C) Slim Blade Type



8pin 12Amp
DPDT 2 Pole
(2 Form C)
AgNi Contacts

Features	Catalog Number	Coil Voltage
Indicating Flag Electrical LED	RY2-2012-26-1006-L	6VDC
	RY2-2012-26-1012-L	12VDC
Built-in LED Bi-polar input for DC versions	RY2-2012-26-1024-L	24VDC
	RY2-2012-26-1048-L	48VDC
	RY2-2012-26-1110-L	110VDC
	RY2-2012-26-5006-L	6VAC
	RY2-2012-26-5012-L	12VAC
	RY2-2012-26-5024-L	24VAC
	RY2-2012-26-5120-L	120VAC
	RY2-2012-26-5240-L	240VAC

Socket Accessories for 8pin, RY2 Relays



Screw Terminal
Slim Blade Plug-in
Socket for RY2 Relays

SB08

RUC 2 Pole (2 Form C) Square Base Blade Type



11pin 15Amp
DPDT 2 Pole
(2 Form C)
AgSnO₂
Contacts

Features	Catalog Number	Coil Voltage
Indicating Flag Electrical LED	RUC-3012-26-1006-L	6VDC
	RUC-3012-26-1012-L	12VDC
Built-in LED Bi-polar input for DC versions	RUC-3012-26-1024-L	24VDC
	RUC-3012-26-1048-L	48VDC
	RUC-3012-26-1110-L	110VDC
	RUC-3012-26-5006-L	6VAC
	RUC-3012-26-5012-L	12VAC
	RUC-3012-26-5024-L	24VAC
	RUC-3012-26-5120-L	120VAC
	RUC-3012-26-5240-L	240VAC

RUC 3 Pole (3 Form C) Square Base Blade Type



11pin 10Amp
3PDT 3 Pole
(3 Form C)
AgSnO₂
Contacts

Features	Catalog Number	Coil Voltage
Indicating Flag Electrical LED	RUC-3013-26-1006-L	6VDC
	RUC-3013-26-1012-L	12VDC
Built-in LED Bi-polar input for DC versions	RUC-3013-26-1024-L	24VDC
	RUC-3013-26-1048-L	48VDC
	RUC-3013-26-1110-L	110VDC
	RUC-3013-26-5006-L	6VAC
	RUC-3013-26-5012-L	12VAC
	RUC-3013-26-5024-L	24VAC
	RUC-3013-26-5120-L	120VAC
	RUC-3013-26-5240-L	240VAC

RUC Plug-in relays Accessories



Plug-in
Relay Socket
for RUC Relays

SB11

PI84 Interface Relays 2 Pole (2 Form C)



8Amp DPDT
2 pole (2 Form C)
AgNi Contact

Features	Catalog Number	Coil Voltage
Electrical LED PCB relay, plug-in socket, protective module, retainer clip and description plate	PI84-024DC-M4IG-TS-2012	24VDC
	PI84-024AC-M91G-TS-2012	24VAC
	PI84-120AC-M93G-TS-2012	120VAC

Accessories for PI84 Relays



For use with	Catalog Number
PI84-024DC-M4IG	RM84-2012-25-1024
PI84-024AC-M91G	RM84-2012-25-5024
PI84-120AC-M93G	RM84-2012-25-5120

PI85 Interface Relays 1 Pole (1 Form C)



16A SPDT
1 Pole (1 Form C)
AgNi Contacts

Features	Catalog Number	Coil Voltage
Electrical LED PCB relay, plug-in socket, protective module, retainer clip and description plate	PI85-024DC-M4IG-TS-2011	24VDC
	PI85-024AC-M91G-TS-2011	24VAC
	PI85-120AC-M93G-TS-2011	120VAC

Accessories for PI85 Relays



For use with	Catalog Number
PI85-024DC-M4IG	RM85-2011-25-1024
PI85-024AC-M91G	RM85-2011-25-5024
PI85-120AC-M93G	RM85-2011-25-5120

PIR6W Interface Terminal Block Relays (1 Form C) 1 Pole



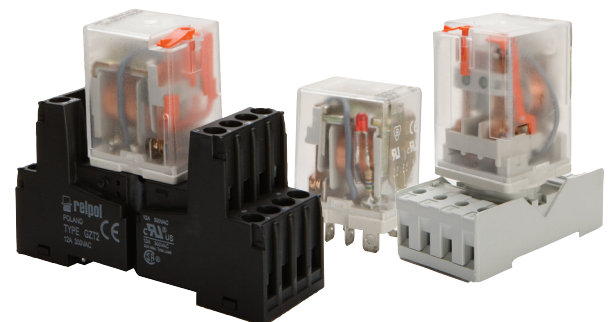
6Amp SPDT 1Pole
(1 Form C) AgSnO₂

Features	Catalog Number	Coil Voltage
Change over relay with built-in Green LED indicator	PIR6W-1P-115VAC/DC	115VAC/DC
	PIR6W-1P-12VDC	12VDC
	PIR6W-1P-24VAC/DC	24VAC/DC
	PIR6W-1P-24VDC	24VDC

Replacement operational relays for PIR6W



For use with	Catalog Number
PIR6W-1P-12VDC	RM699BV-3011-85-1012
PIR6W-1P-24VDC	
PIR6W-1P-24VAC/DC	RM699BV-3011-85-1024
PIR6W-1P-115VAC/DC	

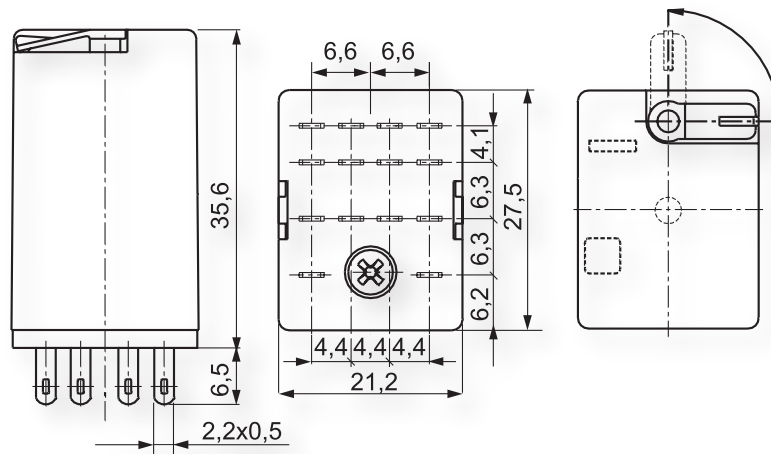


* Relay retainer clips and other accessories available see main catalog for details.

R2N/R4N

General Purpose Miniature Power Plug-in Relays

Typical R4

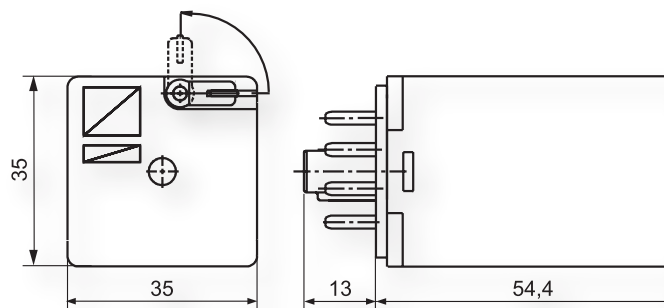


		R2N	R4N
Contact number & arrangement		DPDT	4PDT
Contact material		AgNi	AgNi, AgNi/Au 5 μm
Max. switching voltage	AC/DC	250 V / 250 V	250 V / 250 V
Min. switching voltage		5 V	5 V
Rated load	AC1	12 A / 250 V AC	6 A / 250 V AC
	AC15	3 A / 120 V 1.5 A / 240 V (B300)	1.5 A / 120 V 0.75 A / 240 V (C300)
	AC3	370 W (Single-phase motor)	125 W (Single-phase motor)
	DC1	12 A / 24 V DC	6 A / 24 V DC
	DC13	0.22 A / 120 V DC 0.1 A / 250 V (R300)	0.22 A / 120 V DC 0.1 A / 250 V (R300)

R15

Tube Base Power Plug-in Relays

Typical 8-pin

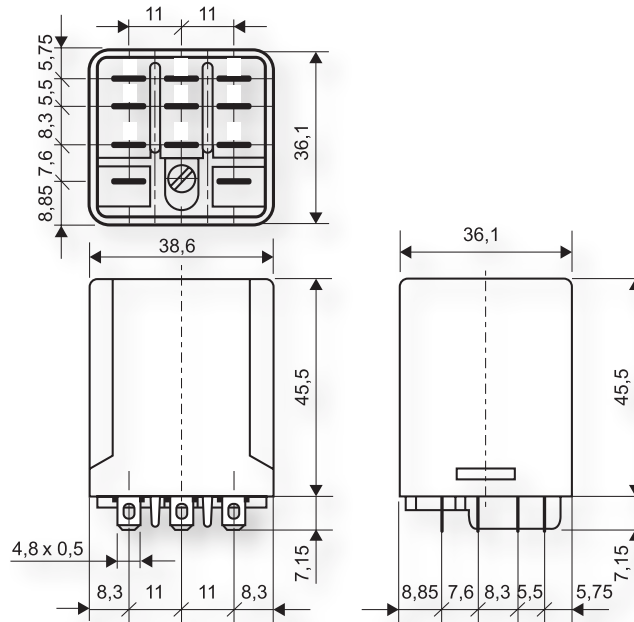


		R15
Contact number & arrangement		DPDT, 3PDT
Contact material		AgNi
Max. switching voltage	AC/DC	250 V
Min. switching voltage		5 V AgNi
Rated load	AC1	10 A / 250 V AC
	AC15	3 A / 120V 1.5 A / 240 V (B300)
	AC3	370 W (single-phase motor 1/2 HP / 240 V AC UL 508)
	DC1	10 A / 24 V DC
	DC13	0.22 A / 250 V 0.1 A / 250 V (R300)

RUC

Square Base Power Plug-in Relays

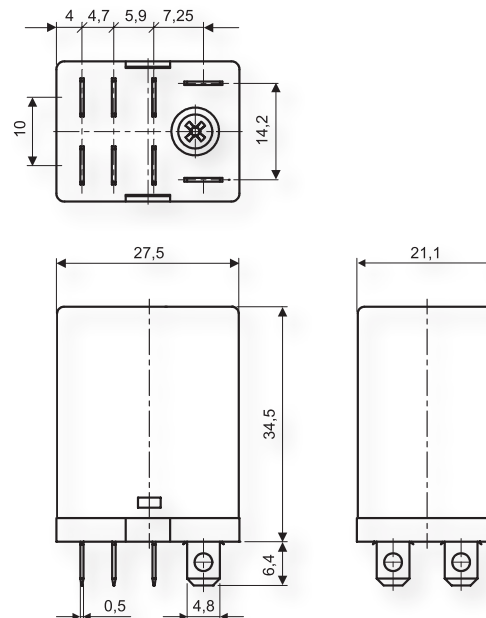
Typical 3-pole



		RUC
Contact number & arrangement		DPDT, 3PDT
Contact material		AgSnO ₂
Max. switching voltage	AC/DC	250 V
Min. switching voltage		10 V
Rated load	AC1	16 A / 250 V AC
	DC1	16 A / 24 V DC

RY2

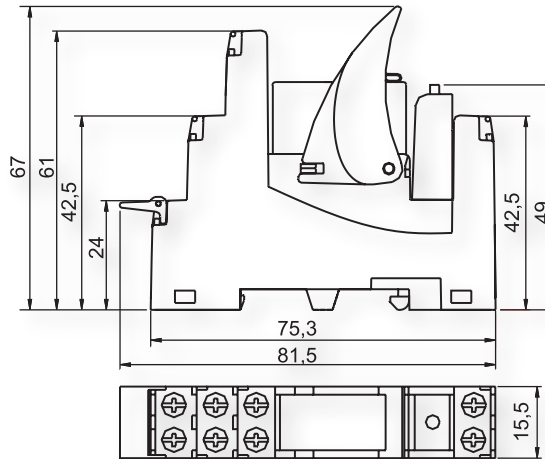
Slim Square Base Power Plug-in Relays



		RY2
Contact number & arrangement		DPDT
Contact material		RY2-2012 AgNi
Max. switching voltage	AC/DC	250 V / 250 V
Min. switching voltage		AgNi 5 V
Rated load	AC1	12 A / 250 V AC
	DC1	12 A / 30 V DC

PI84/85

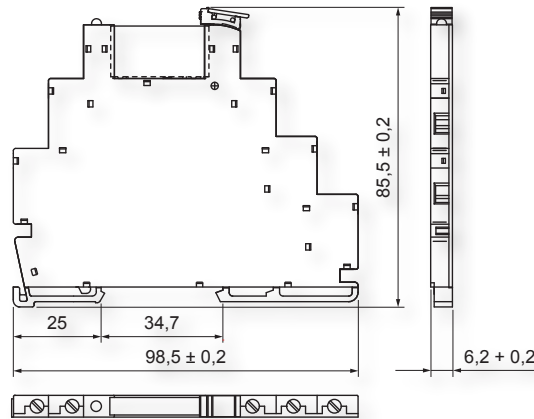
Interface PCB Relays



		PI84	PI85
Contact number & arrangement		DPDT	SPDT
Contact material		AgNi	AgNi
Max. switching voltage	AC/DC	400 V / 300 V	400 V / 300 V
Min. switching voltage		5 V	5 V
Rated load	AC1	8 A / 250 V AC	16 A / 250 V AC
	AC15	3 A / 120 V AC 1.5 A / 240 V AC (B300)	3 A / 120 V AC 1.5 A / 240 V AC (B300)
	AC3	550 W (single-phase motor)	750 W (single-phase motor)
	DC1	8 A / 24 V DC	16 A / 24 V DC
	DC13	0.22 A / 120 V DC 0.1 A / 250 V DC (R300)	0.22 A / 120 V DC 0.1 A / 250 V DC (R300)

PIR6W

Slim Interface Terminal Block Relays



		PIR6W
Contact number & arrangement		1 C/O
Contact material		AgSnO ₂
Max. switching voltage	AC/DC	AgSnO ₂ : 250 V / 400 V AC / 125 V DC
Min. switching voltage	AC/DC	AgSnO ₂ : 10 V
Rated load	AC1	AgSnO ₂ : 6 A / 250 V AC
	DC1	AgSnO ₂ : 6 A / 24 V DC

For more information, or to contact your Sprecher + Schuh representative, visit www.sprecherschuh.com

Sprecher + Schuh US Division Headquarters • 15910 International Plaza Dr., Houston, TX 77032
Customer Service: (877) 721-5913; Fax: (800) 739-7370