

Series M22 Panel Mount Signaling Beacons and Alarms from Auer Signal



Auer Signal



Signaling Solutions...Loud and Clear

M22 Panel Mount Signaling Beacons and Alarms from the Auer company are the perfect compliment to Sprecher + Schuh's world class industrial control product line. High grade, heavy duty and comprehensive, these M22 Signaling Beacons and Alarms are a unique and powerful acoustic signaling solution.

In comparing M22 alarm sounders to competitive products in the alarm signaling industry, the M22 alarm sounders offer more features, approvals and options than any other manufacturer.



Rugged construction for industrial applications

Heavy duty industrial polycarbonate is used to construct all M22 alarm sounders. The entire line meets UL Type 4 / 4X / 13 and IP65 guidelines for use indoors or outdoors. No other manufacturer of competitive product offers this extensive range of environmental approvals.

High Performance Sounders

All M22 alarm sounder models fit into a standard 22.5mm cut-out. There are four M22 alarms sounders models to choose from which range from 65 dBA to 105 dBA decibels at 1 meter. The higher the dBA sound level, the greater the diameter size of the rugged watertight M22 alarm sounders. There are three diameter sizes for the M22 alarm sounders of 30mm, 45mm and 65mm available in 24VDC/AC, 120VAC or 240VAC.

Selectable Tone Types

The M22 alarm sounders are equipped with a plug-in three point finger-safe terminal block for ease of wiring and configuring the tone type. All M22 models can be configured for either Continuous or Pulsing tones as illustrated on the next page. The 65mm M22 alarm sounders can also be wired for a wobble tone (alternating frequency). Users may also adjust the intensity sound levels on the 45mm and 65mm M22 alarm models.

Environmental Approvals

The M22 alarm sounders are cULus listed and CE marked for international markets. They are UL Type 4 / 4X / 13 and IP65 approved for harsh industrial environments. Specific to the food industry, the M22 30mm "812 100.../812 500..." sounder housings are fully enclosed to prevent contaminants from accumulating. The M22 sounders are the perfect choice for your alarm signaling applications.







AUDIBLE SIGNALING

M22 Panel Mount Sounders Series

- Mounts in a standard 22.5 mm hole
- UL Type 4/4X/13, IP65
- Sound output range from 65 dB to 105 dB @ 1 meter
- Selectable continuous or pulsing sounders (wobble tone 65mm)
- Adjustable volume control (45mm & 65mm units)
- 12V-24V AC/DC, 120V AC, 240V AC
- Plug-in Terminal Block
- Captive design eliminates unauthorized product removal
- cULus listed and CE Marked

Panel Mount Alarms, mounting hole 22.5 mm

Components	Description	Tone Types	Sound Level	Housing Color	Voltage	Catalog Number
	ESK 30 mm Diameter Sounder • Fully enclosed, smooth front ❶	Pulse / Continuous	65-70 dBa	Black	12...24V AC/DC	812 500 405
					120V AC	812 500 310
					240V AC	812 500 313
	ESV 30 mm Diameter Sounder • Slots in housing, high output	Pulse / Continuous	80-85 dBa	Black	12...24V AC/DC	812 510 405
					120V AC	812 510 310
					240V AC	812 510 313
	ESM 45 mm Diameter Sounder • Slots in housing, high output	Pulse / Continuous ❷	85-100 dBa	Black	12...24V AC/DC	813 500 405
					120V AC	813 500 310
					240V AC	813 500 313
	ESG 65 mm Diameter Sounder • Slots in housing, high output	Pulse / Continuous / Wobble ❷	85-105 dBa	Black	12...24V AC/DC	814 500 405
					120V AC	814 500 310
					240V AC	814 500 313

❶ No slots in the housing. Ideal for food industry environments.

❷ Adjustable volume capabilities.

❸ D7 Legend Plates can be used with the 30mm diameter devices. Also, the mounting ring is the same as D7-ARP, which can be secured to a panel with use of the D7-AW2 mounting wrench. See Section H in current Sprecher + Schuh catalog for D7 components.



Alarm Tone Selection via terminal

Supply Voltage			Tone output	65mm	45mm	30mm
La	N	Lb				
x	x		Pulsing Tone	✓	✓	✓
	x	x	Wobble Tone (alternating frequency)	✓	~	~
x	x	x	Continuous Tone	✓	✓	✓

Jumper

Connect AC-Neutral to N, and AC-Line to La and/or Lb as appropriate.



AUDIBLE AND VISUAL SIGNALING

M22 Panel Mount Buzzer-LED Steady/Flashing Beacons

- Universally usable panel mount buzzer with LED control light
- 2 Sizes: 65mm – 45mm diameter
- Distinguishable tone types via terminal selectable (ELG)
- LED control light – high brightness, maintenance free
- PLC fit (leakage/inrush current)
- For mounting in 22.5mm and 30.5mm bore holes (with adapter)
- UL Type 4/4X/13

Models

Model ELG-ELM

- Panel mount buzzer – LED control light
 - » Sound and light synchronized
 - » Continuous tone – steady light
 - » Pulsing tone – flashing light in pulse frequency
 - » Wobble tone – flashing light in pulse frequency

Model EDG-EDM

- Panel mount buzzer – LED control light
 - » Continuous tone and steady light separately switchable



Panel Mount Buzzer LED Control Light ELG-ELM Alarm Tone and Light Selection via terminal

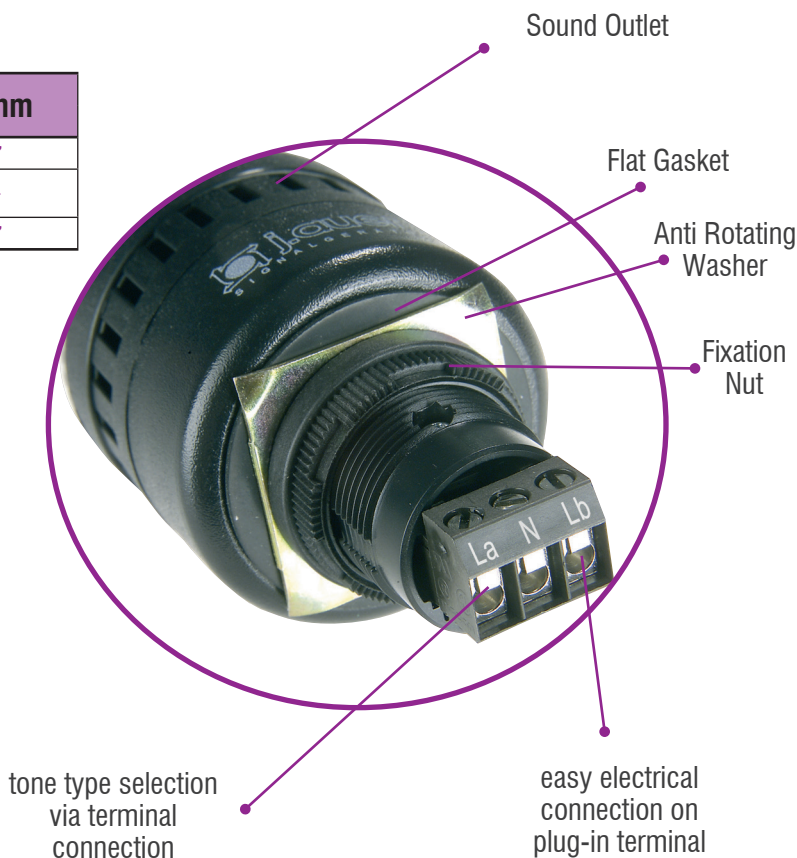
Supply Voltage			Tone output	65mm	45mm
La	N	Lb			
×	×		Pulsing Tone/LED Flashing Light	✓	✓
	×	×	Wobble Tone/LED Strobe Light (ELG)	✓	~
×	×	×	Continuous Tone/Steady Light	✓	✓

Jumper

Connect AC-Neutral to N, and AC-Line to La and/or Lb as appropriate.

Panel Mount Buzzer LED Control Light EDG-EDM Alarm Tone and Light Selection via terminal

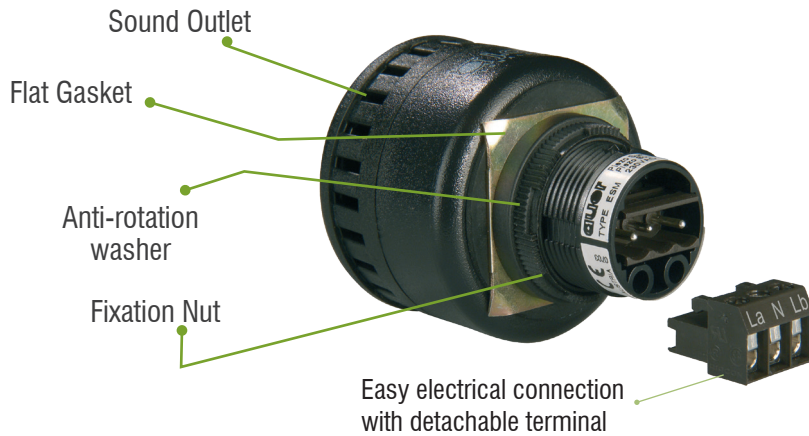
Supply Voltage			Tone output	65mm	45mm
La	N	Lb			
×	×		Continuous Tone	✓	✓
	×	×	Steady Light	✓	✓





Series M22 Design

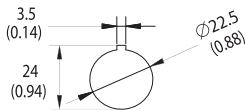
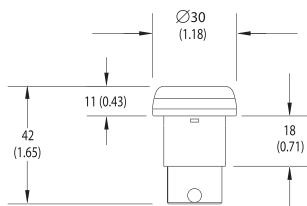
M22 SOUNDERS



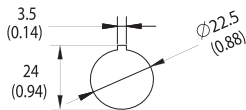
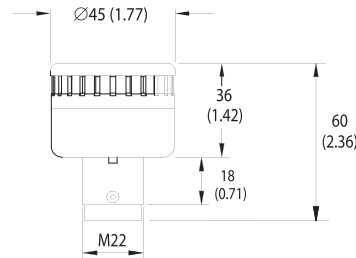
Adjustable volume control for 45mm and 65mm versions

M22 Signaling Alarms (Approximate Dimensions)

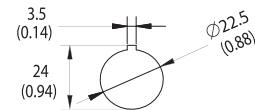
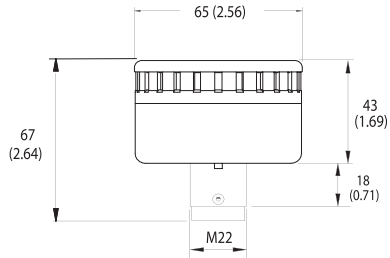
30 mm Alarm ①



45 mm Alarm ②

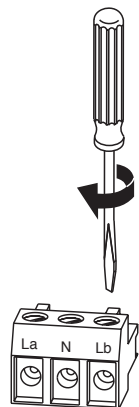


60 mm Alarm ②



- ① Terminal connector adds 14 mm (0.55 in.) to back of panel depth.
- ② Terminal connector adds 9 mm (0.35 in.) to back of panel depth.

Torque Rating

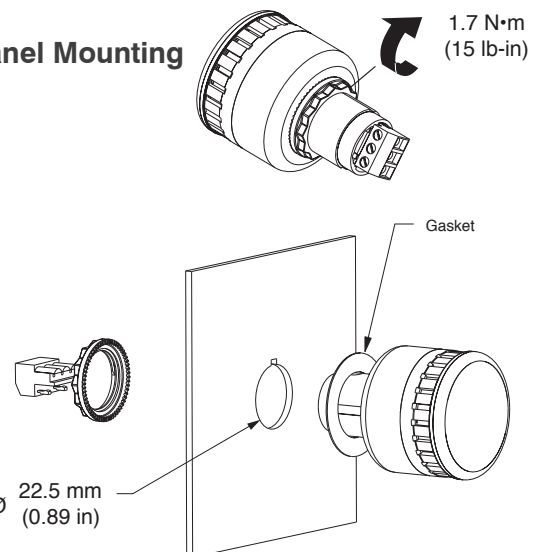


.56 N•m
(5 lb-in)

7 mm
(0.28 in)

Max. 2.5 mm²
(Max. #14 AWG)

Panel Mounting





VISUAL SIGNALING

M22 Panel Mount Beacon Series "I"

- Versatile usable panel mount beacon series
- For mounting in 22.5mm bore holes
- 3 sizes: 30, 45 and 65mm
- Selection of steady/flashing function, desired color via terminal
- Maintenance free – long lifetime
- PLC fit (leakage/inrush current)
- Lens pattern designed for optimum light dispersion



M22 Panel Mount Beacons with Plug In Terminal
available in 65mm, 45mm, and 30mm
available in amber, red, clear, blue, green and yellow

Models

- LED steady-/flashing beacons
- Strobe beacons
- Multi-color beacons – whole lens with 1 color visible
- LED multi-color beacons – 2 colors visible – separated color areas
- UL Type 4/4X/13

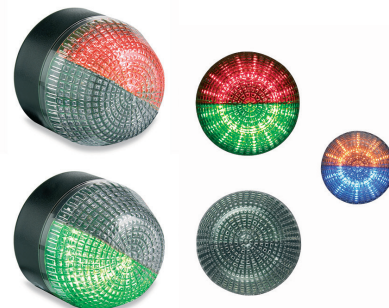


M22 Panel Mount Beacons in built in condition
available in 65mm, 45mm, and 30mm
available in amber, red, clear, blue, green and yellow



LED Multi Color Beacons

available in 65mm, 45mm, and 30mm
available in amber, red, clear, blue, green and yellow
One beacon provides ability to choose between 2 colors to be visible when illuminated



LED Multi Color Beacons

available in 65mm, 45mm, and 30mm
2 separate colors visible when illuminated
available in various combinations in amber, red, clear, blue, green and yellow
can choose any 2 colors combination for one unit



ONE LIGHT!
3 color options.
Select red, green OR yellow

Sealed Cable for special applications

Individual cable lengths
Specifications available (min. quantity required)
Protection Class IP67



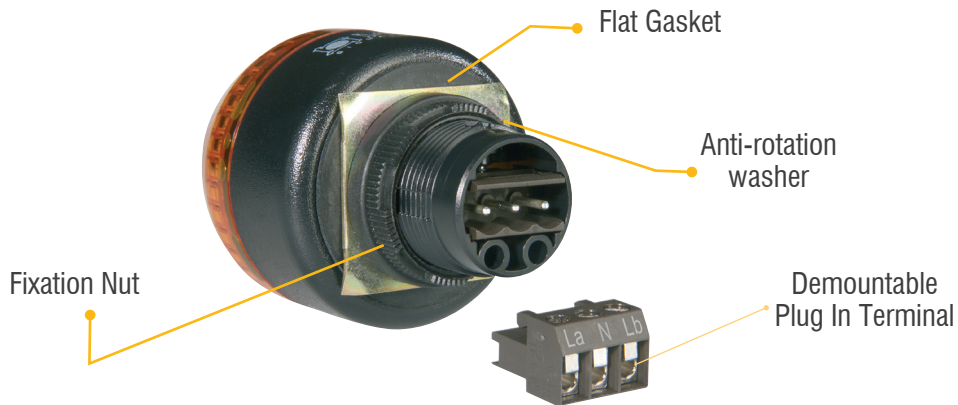
M22 Panel Mount 3-Color Steady Beacon

available in 65mm and 45mm
available in 3 colors: red, yellow and green
One beacon provides ability for all 3 colors



M22 BEACONS + SOUNDERS

M22 PANEL MOUNT BEACONS



allows for easy electrical connection and comfortable mounting onto panel mount beacon

M22 PANEL MOUNT BUZZER BEACONS

