

L7 Motor Disconnect Switches



Switch + Shaft + Handle

Sprecher + Schuh's L7 Series of Motor Disconnect Switches incorporates the latest modular design techniques to provide maximum functionality with the fewest number of parts. These rugged switches are compact, reliable and the ideal choice for all disconnect applications including motor disconnects per UL-508 Part III. A device under this UL listing meets the requirements as a motor controller or "at motor disconnect."



The right switch for your application

L7 Disconnect Switches are available in four frame sizes up to 100 amps. All L7s come in six pole models, as well as three pole changeover switches. A full complement of switch handles and accessories including auxiliary contact blocks, ground and neutral terminals make the L7 line broad enough to tackle virtually any disconnect duty.

Meets the toughest safety standards

A generous 9mm gap between open contacts, combined with high short circuit withstand capabilities ensures a minimum probability of welding. All switches are touch safe to IP20, while most switch handles are rated for strong water jets to IP66. Excellent making and breaking characteristics provide a level of safety that, in many cases, exceeds international standards.

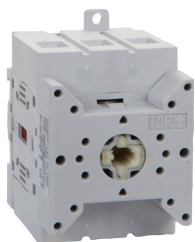
Modular, flexible and easy to assemble

The versatile L7 line is fully modular. All accessories snap-on and off without the use of tools, speeding assembly. The L7's modular design minimizes inventory with features such as universal auxiliary contact blocks... virtually every block fits all frame sizes. Both metal and plastic shaft extension systems are available to accommodate most panel depths.

International standards and approvals

L7 Motor Disconnect Switches are UL Listed (UL508, Part III) and CSA approved (C22.2 No. 14). They also carry the CE Mark and meet IEC 947-1, 947-3, as well as IEC 207 requirements. They are approved in virtually every international market.





LE7-25-1753

Front Mount

- Available from 16A to 100A
- 3-Pole, 3-Pole changeover & 6-Pole
- Includes standard handle shaft
- 4th pole accessory available



LA7-25-1753

Base Mounted

- Available from 16A to 100A
- 3-Pole, 3-Pole changeover & 6-Pole
- Includes standard handle shaft
- 4th pole accessory available

Enclosed

- Nonmetallic, & Painted or Stainless Steel
- Type 1/3/12/4/ or 4X
- UL and CSA approved

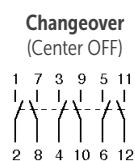
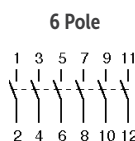
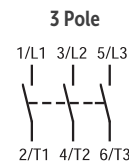
Handle Shafts

- Type 3/3R/12/4/4X, IP66 rated
- Defeatable or non-defeatable locking options
- Screw-Fixing or Central Nut
- Type A, E, I, L, G, N & R
- Modular and metal shaft systems
- Extension shafts for deep enclosures

Accessories

- Auxiliary Contact Blocks
- Fourth Pole Add On
- Ground & Neutral Terminals
- Terminal Covers
- Mechanical Interlock

UL508 Motor Disconnects	UL/CSA Amps	Horsepower 3Ø			3 Pole 90° Throw Catalog Number	6 Pole 90° Throw Catalog Number	Changeover Catalog Number
		240V	480V	600V			
LE7 Front Mounted Switches	16	3	7.5	10	LE7-16-1753	LE7-16-1756	LE7-16-3753
	25	5	10	10	LE7-25-1753	LE7-25-1756	LE7-25-3753
	32	7.5	15	15	LE7-32-1753	LE7-32-1756	LE7-32-3753
	40	10	20	20	LE7-40-1753	LE7-40-1756	LE7-40-3753
	63	15	25	25	LE7-63-1753	LE7-63-1756	LE7-63-3753
	80	25	40	50	LE7-80-1753	LE7-80-1756	LE7-80-3753
	100	30	50	50	LE7-100-1753	LE7-100-1756	LE7-100-3753
LA7 Base Mounted Switches	16	3	7.5	10	LA7-16-1753	LA7-16-1756	LA7-16-3753
	25	5	10	10	LA7-25-1753	LA7-25-1756	LA7-25-3753
	32	7.5	15	15	LA7-32-1753	LA7-32-1756	LA7-32-3753
	40	10	20	20	LA7-40-1753	LA7-40-1756	LA7-40-3753
	63	15	25	25	LA7-63-1753	LA7-63-1756	LA7-63-3753
	80	25	40	50	LA7-80-1753	LA7-80-1756	LA7-80-3753
	100	30	50	50	LA7-100-1753	LA7-100-1756	LA7-100-3753



For more information, or to contact your Sprecher + Schuh representative, visit

www.sprecherschuh.com

Sprecher + Schuh US Division Headquarters • 15910 International Plaza Dr., Houston, TX 77032

Customer Service: (877) 721-5913; Fax: (800) 739-7370