

L2 Rotary Control & Load Cam Switches



Designed for your application's most demanding motor control needs, Sprecher + Schuh's L2 Disconnect Switch is offered in 12, 16, 20 or 25A load sizes. Switches may be configured for up to 10 inductive load-rated circuits. Handle operation may be specified for up to 6 positions with 30, 60, 45 or 90 degrees of positional rotation.

- **Control switches** - for process control, making and breaking circuits and as instrument selector switches.
- **Motor switches** - as ON/OFF and reversing switches.
- **Multi-position load switches** - for the step control of loads such as heaters and furnaces.
- **Motor load disconnect switches** - for safely isolating circuits during repair and maintenance.
- **Emergency OFF switches** - for isolating circuits in case of danger or emergency situations. Can be equipped for locking in the OFF position.



Any switch configuration...

Two frame sizes provide control and load switching up to 25 amps. Both frame sizes are available in panel mount and base mount for total flexibility. A wide range of switching configurations are offered from stock and in many cases custom switches can be fabricated to order. The L2's sturdy design incorporates a positive switching action with a clearly designed switching point. Switch bodies are touch-safe (IP20) and manufactured from self-extinguishing materials corresponding to Class UL 94 V0. All control knobs and shafts are spray proof and dust proof to IP66.

Modular and flexible

The same switch handle assemblies and shaft extension systems are used for both our L2 control switches and L7 disconnect switches. This reduces inventory, simplifies stocking and allows you to put together the ideal switch for your application quickly and easily.

Simple assembly and fast installation

Shaft extensions and door interlocks snap-on quickly without tools, saving time during assembly. Captive terminals are shipped open and are totally accessible regardless of whether the switch is base mounted or panel mounted. Screwdriver guides and clear terminal markings reduce wiring mistakes and speed installation. In addition, most switch handle assemblies are available with either screw fixing or the new central nut mounting system for total flexibility.

Key Features

- Motor rated/HP rated to switch inductive loads
- UL 508 Listed Suitable as Motor Disconnect
- Suitable for Across-the-Line motor starting applications
- Gold flashed contacts for Auxiliary load switching
- Lockout/Tagout compliant (when using lockable handles)
- Mounts to many competitive panel drilling patterns
- UL listed, CSA certified, CE compliant



L2 Rotary Cam Features

Switch Handle Assemblies

- Ten different handles to select from in screw mount or center nut fixing.
- Up to 6 switch positions



LFS2-A-4-825A



LE2-12-8251

Switch Body Assemblies

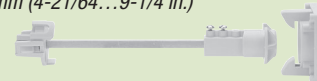
- Range 12 to 25 Amp
- LE2 Front mount
- LA2 Panel mount



Options

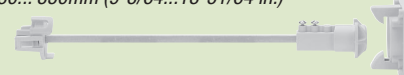
Short Metal Shaft – LA2-G3393

Length: 10... 235mm (4-21/64...9-1/4 in.)

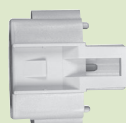


Long Metal Shaft – LA2-G3394

Length: 230... 350mm (9-3/64...13-51/64 in.)



Adjustable metal shaft extensions snap on securely to LA2 switches via the same quick-connect design as shaft extension modules.



Shaft Extension Module

Ideal for lengthening the shaft of an LA2 switch up to 144 mm (5.5").



Lockable Switch Handles

Two styles of central nut or screw mounting UL Type 12 switch handles with legend plate. Over 10 handle styles to choose from.



Suitable as an at motor disconnect

L2 Cam Switches	12A	16A	20A	25A
Amp Rating ① UL/CSA/IEC	12	16	20	25
3Ø Horsepower				
240 VAC	2	3	4	6
480 VAC	5	7-1/2	8	12
600 VAC	5	7-1/2	10	15
1Ø Horsepower				
120 VAC	1/2	3/4	1	1-1/2
240 VAC	1	1-1/2	2	3
Dimensions ② L x W mm (inches)	42 x 42 (1.6 x 1.6)		55 x 55 (2.2 x 2.2)	

① These devices are suitable for use on a circuit capable of delivering not more than 5,000 rms symmetrical amperes, 600V max, when protected by a K5 class fuse.

② Depth is dependent on the amount of contacts required. See full catalog for details.

How to order L2 control and load switches

All L2 switch bodies come standard with a shaft and mounting screws for the switch handle assembly. Accessories such as shaft extensions and enclosures are ordered separately.

First determine the switch body you need then choose a switch handle assembly and determine the type and length of shaft extension you require.

Contact your local Sprecher + Schuh representative for more information.