

Series KTU9

Molded Case Circuit Breaker



KTU9 Advanced Features for Non-Motor Loads

The advanced features of the KTU9 UL489 Molded Case Circuit Breaker set it apart from larger, more expensive circuit breakers. KTU9 is ideal for use with feeder circuits, control circuits for control circuit transformers and power supplies, industrial heating applications, and HVAC or refrigeration applications.

Enclosed KTU9 Features

- Delivering a smaller footprint for a smaller enclosure
- A current limiting circuit breaker with increased KAIC ratings to 40A provides a higher SCCR ratings for your control panels
- Lockable operator knobs compliant with lock-out safety requirements

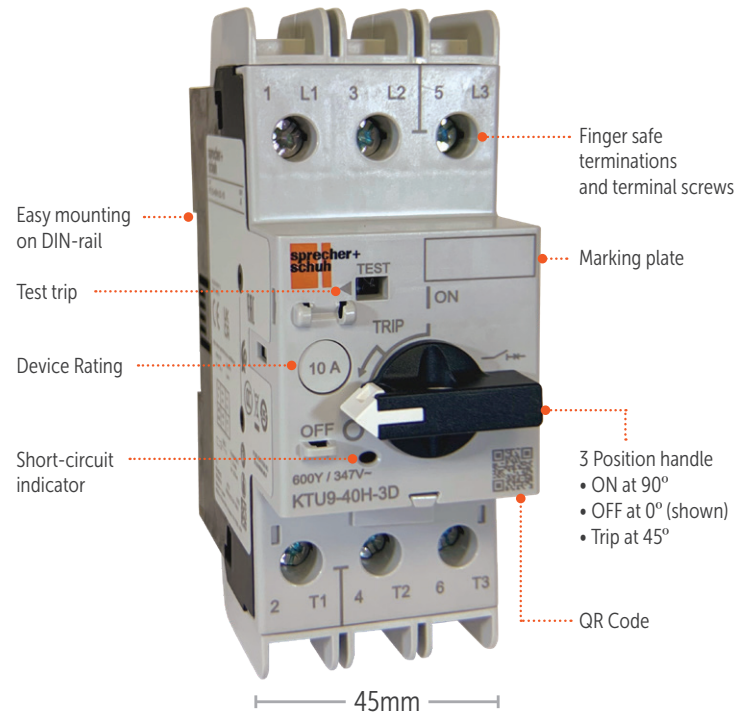
Ideal Applications

- Feeder Circuits for small cabinets, distribution panels, branch circuit protection, power transformers and heaters
- Control circuits for control circuit transformers and power supplies
- Industrial heating application
- Air conditioning and refrigeration applications

Overview

KTU9 offers an interrupt rating up to 100kA. The KTU9 also has an interrupt rating six times higher than traditional miniature circuit breakers. This may achieve in a higher overall interrupt capacity panel rating.

Contact your Sprecher + Schuh representative for more information.

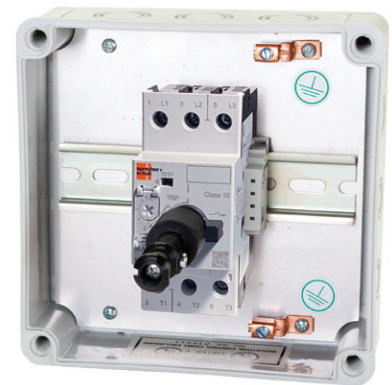


Smaller footprint than competitive devices with the same performance



KTU9 Enclosed UL 489 MCCBs

Sprecher + Schuh's KTU9 series of enclosed UL Molded Case Circuit Breakers provide reliable thermal and magnetic over-current protection in a variety of enclosure types. This series is UL489 Listed, CSA22.2 No. 5 and IEC 60947-2 compliant for global applications. The current limiting circuit breaker provides fixed short circuit and over-current protection and offers high interrupting ratings for 2- and 3-pole devices from 0.5 to 40A. These circuit breakers are 100% rated up to 10A.



KTU9...-VG

Non-Metallic Type 4/4X/12

- Watertight, dusttight, corrosion resistant enclosure
- Black IP66 handle or optional Red/Yellow handles are padlockable
- KTU9 UL489 Molded Case Circuit Breaker in 2-pole or 3-pole models for non-motor loads up to 40A



KTU9...-DG

Painted Steel Type 12

- Dusttight enclosure
- Black IP66 handle or optional Red/Yellow handles are padlockable
- KTU9 UL489 Molded Case Circuit Breaker in 2-pole or 3-pole models for non-motor loads up to 40A



KTU9...-WG

Painted Steel Type 4/12

- Watertight, dusttight enclosure
- Black IP66 handle or optional Red/Yellow handles are padlockable
- KTU9 UL489 Molded Case Circuit Breaker in 2-pole or 3-pole models for non-motor loads up to 40A

Accessories

Accessories are intelligently designed to be field installable, making modifications a snap. As an additional benefit, the KTU9 uses many KT9 standard accessories, and the size and shape of the device fits nicely into your KT9 Motor Control panels.



Front Mount Auxiliaries

- Provide additional control options
- Mount to front of KT9



Load Terminal Cover

- Covers Load Terminals when using front mount auxiliaries
- Required for UL489 compliance when using front mounted auxiliary contacts



Undervoltage & Shunt Trips

- Mount to left side of KT9
- Undervoltage relay automatically trips when voltage drops below 35-70%
- Shunt trip trips motor when voltage is applied remotely
- Must be Series B design



Door Coupling Handle

- Padlockable, up to 3 padlocks
- NEMA Type 1/4/4X/12 & IP66
- Black/Grey or optional Red/Yellow

Contact your Sprecher + Schuh representative for more information.

For more information visit sprecher.shuh.com