

# AUDIBLE AND VISUAL SIGNALING

## Combination of Beacons and Sounders

Auer Signal’s vast line of beacons are available in combinations with multi-tone sounders providing both visual and audible signaling solutions in one component. The Beacon Q Series is available to combine with the Multi-Tone Alarm Sounders Series A in 4 different sizes. The M22 Panel Mount Beacons are available with buzzers in 2 sizes. Horns and mini horns with beacons are available with various sound....

## Combo Multi-Tone Alarm Sounder “A” and Beacons “Q” Series

- Comprehensive range of standard and high output alarm sounders in combination with cubic design beacons in LED or xenon
- 3 stage alarm/tones externally switchable (ASS-T, ASM, ASL, ASX) for applications in industry, process control, fire/gas alarm, marine.
- Versatile installation and mounting options
- Tone table includes international and standardized signal tones for fire/gas alarm and other applications
- Sound and light separately switchable
- Optional/customized tones/tone tables upon request
- Automatic synchronization in multi-sounder installations
- Fit for PLC applications (leakage, inrush current)
- UL Type 4/4X/13

### Beacon Options

- Modern LED illuminating long lifetime, low nominal current, vibration proof
- Conventional xenon, classic signaling with good signaling effect

### LED Steady/Flashing Beacons

- Available in 94mm (size 1), 132mm (size 2), 184mm (size 3) and 228mm (size 4)

### LED Multi-Strobe Beacons

- Available in 184mm (size 3) and 228mm (size 4)
- very bright, high signaling effect
- 3 strobe patterns (double / 6 times / multi-strobe), externally switchable

### Xenon Strobe Beacons

- Available in 94mm (size 1) and 132mm (size 2)
- Xenon strobe beacons with 5 and 10 J strobe energy



**Multi-Tone Alarm Sounders “A” with light indicator**  
LED Steady and LED Steady/Flashing available in 94mm  
available with 8 and 32 tones



**Multi-Tone Alarm Sounders “A” with light indicator**  
LED Strobe and LED Steady/Flashing available in 132mm  
available with 32 tones



**Multi-Tone Alarm Sounders “A” with light indicator**  
LED Strobe and LED Steady/Flashing available in 184mm and 228mm  
available with 63 tones



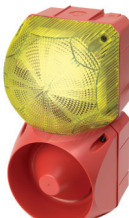
**Beacons “Q” with Buzzer Indicator**  
LED Steady/Flashing/Multi Strobe/Xenon Strobe  
available in 94, 132, 184 and 228mm  
available with 2 and 3 tones



**Multi-Tone Alarm Sounders “A” and Beacons “Q”**  
LED Steady/Flashing / Xenon Strobe available in 94mm  
available with 8 and 32 tones



**Multi-Tone Alarm Sounders “A” and Beacons “Q”**  
LED Steady/Flashing/ Xenon Strobe available in 132mm  
available with 32 tones



**Multi-Tone Alarm Sounders “A” and Beacons “Q”**  
LED Steady/Flashing/LED Multi Strobe available in 184mm and 228mm  
available with 63 tones



## M22 Panel Mount Buzzer with Beacon

Universally usable panel mount buzzer with LED control light

### Models

- Series ELG-ELM Panel mount buzzer – LED control light
  - » Sound and light synchronized
  - » Continuous tone – steady light
  - » Pulsing tone – flashing light in pulse frequency
  - » Wobble tone – flashing light in pulse frequency
- Series EDG-EDM Panel mount buzzer – LED control light
  - » Continuous tone and steady light separately switchable

### Features

- Available in 2 sizes: Ø 65mm and Ø 45mm
- Distinguishable tone types via terminal selectable (ELG)
- LED control light – high brightness, maintenance free
- PLC fit (leakage/inrush current)
- Bore hole mounting 22.5mm diameter standard (30.5mm available w/diameter with adapter)
- UL Type 4/4X/13



adjustable volume control for 45mm and 65mm / tone type selection via terminal connection



Auer Signal



ELG-EDG series

ELM-EDM series



## Mini Horn-Signal Beacon / Strobe Beacon

Combination of an electromechanical horn with signal beacon or strobe beacon for universal visual-audible applications

- Signal beacon
- Available in Ø 60mm
- Beacon options:
  - » Steady light with bulb or LED-bulb (LLL)
  - » Flashing light with LED-bulb (LLB)
  - » Strobe light
- Models with or without cone
- Sound and light separately switchable
- Attractive price/performance ratio
- 2 mounting widths
- CE Marked



Steady (GL) incandescent



LED - Steady (LLL)



LED - Flashing (LLB)

**Sprecher + Schuh US Division Headquarters**  
15910 International Plaza Dr., Houston, TX 77032  
Customer Service: (877) 721-5913; Fax: (800) 739-7370

[www.sprecherschuh.com](http://www.sprecherschuh.com)

Publication No: F-BEACONS\_v6 3/19

# Modular Beacon Series and Combo Visual /Audible Series from Auer Signal



## Signaling Solutions from Auer Signal

Five Types of Illumination	Interchangeable Components	Simple Twist & Release Modules	Heavy Duty Construction
<b>Modular Beacon Series “Q”, “R”, and “N” and M22 Panel Mount Beacons</b>			
<b>Features:</b> <ul style="list-style-type: none"><li>• LED Steady, LED Flashing, Xenon and LED Strobe and LED Multi strobe, rotating mirror beacon (halogen)</li><li>• LED Multi-color beacons</li></ul>			
<b>Combination Visual and Audible Beacons and Sounders</b>			
<b>Features:</b> <ul style="list-style-type: none"><li>• Combination multi-tone alarms “A” and “Q”</li><li>• Multi-tone Alarm “A” with light beacon indicator</li><li>• Beacons “Q” with buzzer indicator</li><li>• Mini-Horn signaling with steady, flashing or strobe beacons</li><li>• Strobe beacon with signaling sounder</li><li>• Electronic multi-tone siren</li></ul>			

Sprecher + Schuh is the exclusive Authorized Distributor for Auer Signaling Products in North America.

Sprecher + Schuh is the exclusive authorized distributor for the Auer Signaling product line in North America. Auer’s vast line of tower lights, beacons, sounders, horns and panel mount signals is the perfect compliment to Sprecher + Schuh’s world class industrial control product line. High grade, heavy duty and comprehensive, this signaling line provides flexibility and features that will fit multiple applications in various industries. Auer offers a vast selection of Visual and Audible Signaling solutions that can even be combined to provide a solution for every signaling need in various industries.



Auer Signal

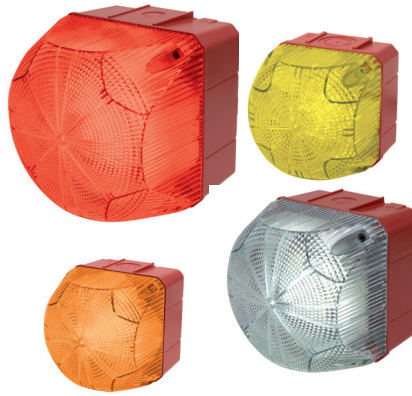
# VISUAL SIGNALING

## Offering a Variety of Visual Signaling Solutions

Auer Signaling provides a large variety of industrial single- and multi-status visible indication beacons. Each beacon line is available in a variety of sizes and colors. Heavy duty and available in a variety of sizes and colors enables for these beacons to fit an array of applications in multiple industries. The entire line meets UL Type 4 / 4X / 13 and IP65 guidelines for use indoors or out. Four lines are available: Series Q, Series N, Series M22, and Series M. No other manufacturer of competitive product offers this extensive range of environmental approvals.

### Beacons Series “Q”

Comprehensive range of cubic design beacons in LED and xenon



#### Available in 4 sizes and 6 color options

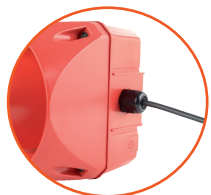
- Sizes: Size 1 - 94mm / Size 2 - 132mm / Size 3 - 184mm / Size 4 - 228mm
- Colors: blue, red, amber, yellow, white, green

#### In modern LED illumination

- Long lifetime, low current consumption, vibration proof
- LED steady/flashing beacons in size 1(94mm), size 2 (132mm), size 3 (184mm), and size 4 (228mm)
- LED multi-strobe beacons in size 3 (184mm) and size 4 (228mm)
- Most modern LED illumination with high signaling effect
- 3 strobe patterns (double/6 times/multi-strobe externally switchable)
- UL Type 4/4X/13

available in 4 sizes, steady/flashing, multi-strobe and multi-strobe patterns

### Accessories



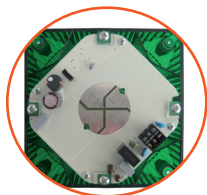
**Lateral cable entry** on both sides with cable gland (accessory type AKV)



**Grommet from back side** (included as standard)



**Metal bracket kit** for mounting alarm sounders or beacons in specific direction, on mounting platforms, devices, etc (Accessory type AB1-AB4 for single units only)



**Electrical connection via cage clamp**



**Flat gasket** for correct IP66 installation on smooth surfaces on the housing (accessory type AG1-AG4)



**Mounting kit AMK** for mounting/ combination of 2 or more same size sounders or beacons



### Beacons Series “N”

Modern LED beacons in a compact 90mm design including **HIGH PERFORMANCE** models for high signaling requirements (i.e. in sun light)



#### Features

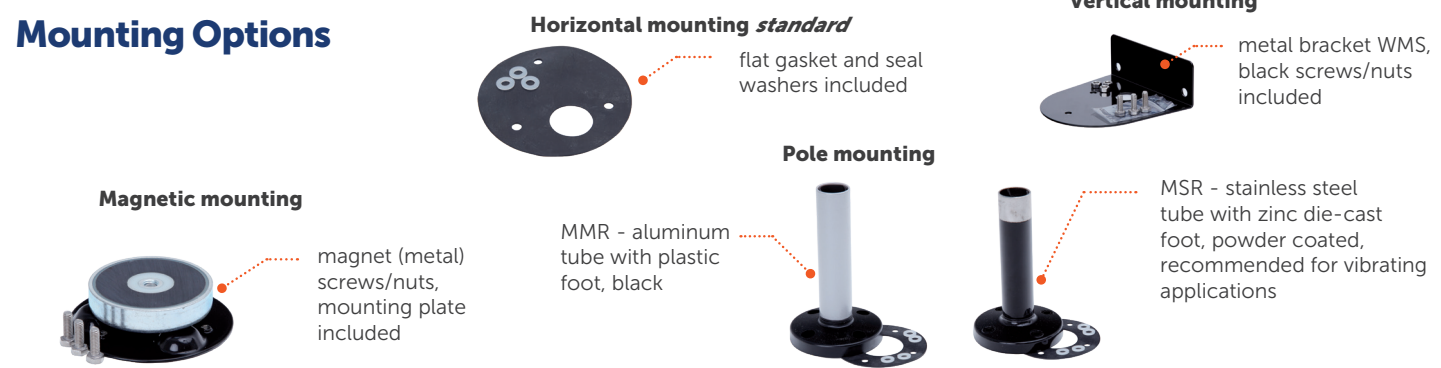
- Wide voltage range due to switched mode power supply (NES, NFS-HP, NMS-HP)
- Excellent light dispersion and signaling effect due to distinct lens optics
- Shock and vibration resistant, maintenance free, long lifetime (>50,000 hrs)
- Inrush current limitation, emc-safe, leakage up to 3mA
- Locking screw to prevent lens separation

#### Available in 90mm with multiple LED options

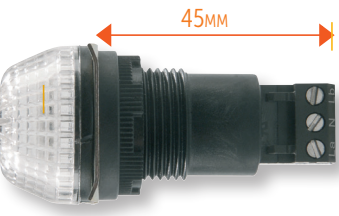
- Series NES LED steady/flashing beacon
- Series NFS LED strobe/double strobe beacon
- Series NMS LED multi color beacon (green, red, yellow)
- Series NFS-High Performance LED multi strobe beacon
- Series NMS-High Performance LED multi color beacon (green, red, yellow)

ONE LIGHT!  
3 color options.  
Select red, green and yellow OR 3-color pattern

### Mounting Options



### M22 Panel Mount Beacons Series “I”



#### Models

- LED steady-/flashing beacons
- Strobe beacons
- Multi-color beacons – whole lens with 1 color visible
- LED multi-color beacons – 2 colors visible – separated color areas
- UL Type 4/4X/13

#### Features

- Versatile usable panel mount beacon series
- For mounting in 22.5mm bore holes
- 3 sizes: 65 – 45 – 30mm diameter
- Selection of steady/flashing function desired\color via terminal
- Maintenance free – long lifetime (100,000 hours)
- PLC fit (leakage/inrush current)
- Lens pattern designed for optimum light dispersion



### Beacons Series “R”



#### Standard Base RBL

- low profile for surface mounting
- vertical mounting with design bracket RWD
- cable entry at the bottom
- grommet (pre-installed) or cable gland (RKV)
- anti twist protection screw

#### Universal Base RBH

- surface or pole mounting on 25mm tubes
- grommet or cable gland (AKV) bottom-up
- 2 lateral cable entries (cable gland AKV)
- anti twist protection screw

#### Universal Base RBNPT

- conduit mounting (pre-installed NPT 1/2inch insert)
- for conduits with NPT 1/2inch threads
- lateral conduit mounting possible
- anti twist protection screw

#### Audible Base RBA:

- 32 tones, 3 tones externally switchable
- max. 103 dB(A) in 1 m
- for surface mounting / vertical with optional bracket
- anti twist protection screw



fresnel lens available with steady/flashing/strobe beacons

