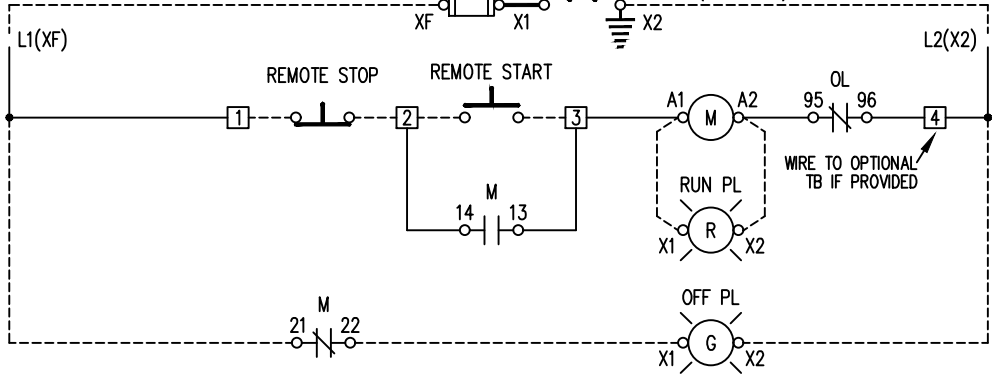
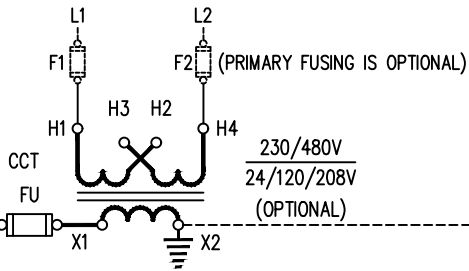
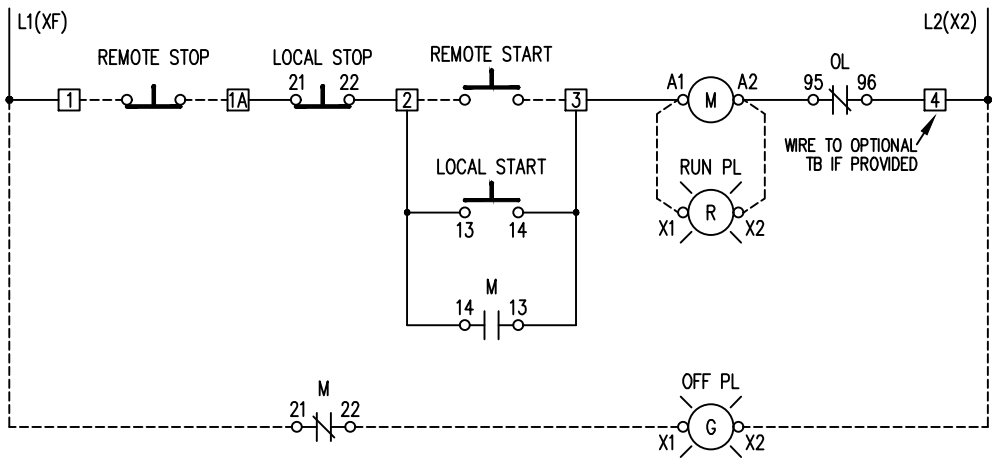


LINE	JUMPER	
230V	H1 H4	H1&H3 H2&H4
480V	H1 H4	H2&H3



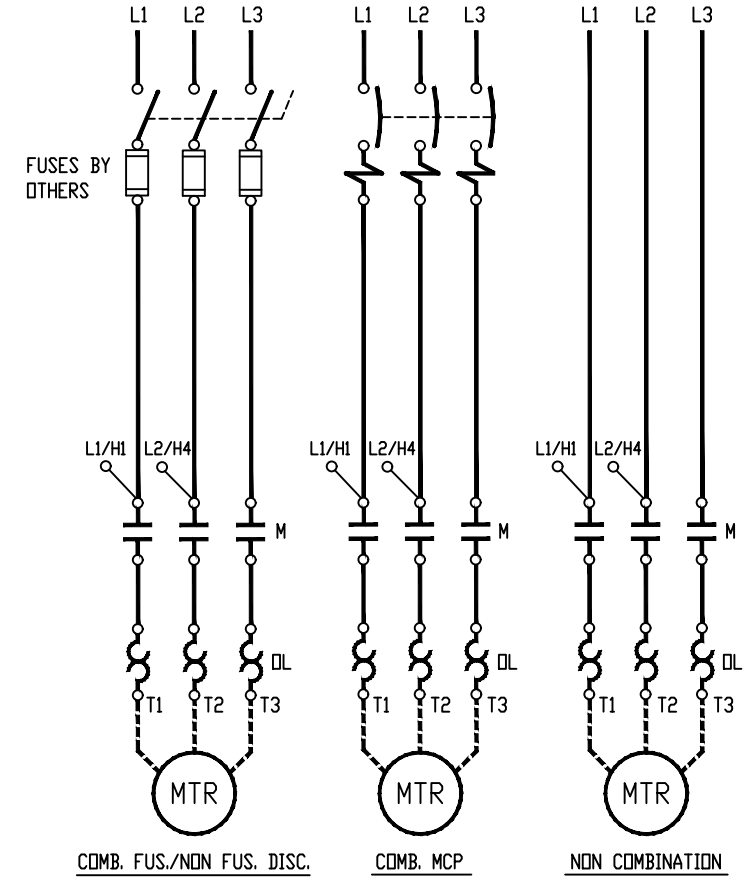
REMOTE START-STOP PUSHBUTTONS W/ OPTIONAL TERMINAL SUPPLIED



LOCAL & REMOTE START-STOP PUSHBUTTONS W/ OPTIONAL TERMINAL SUPPLIED

NOTES:

- 1). X2 TERMINAL GROUNDED AS STANDARD, REMOVE IF NOT REQUIRED.
- 2). IF CCT IS SUPPLIED DELETE TERMINAL NO. 4.



6	GENERAL REVISION	4-3-2017	CG
REV.	DESCRIPTION	DATE	APP'D
DESIGNED EAP	FULL VOLTAGE NON-REVERSING MAGNETIC STARTER W/ LOCAL-REMOTE START-STOP PB THREE PHASE	sprecher+ schuh HOUSTON, TEXAS	
DRAWN EAP			
APPROVED PAB		DWG. NO.	SERIES
DATE 12-87		CAT WS-101-06	100