

Series D7D Monolithic Pilot Devices



Push Buttons

Emergency Stops

Pilot Lights

Selector Switches



Features

Time Saving

- One part number ordering
- Complete one piece panel mounting
- Lenses, press plates and handles pre-fitted

Security

- Single rear fixing nut
- Tamper-proof press plates and rotary handles
- IP 20 finger protection on terminals

Technology

- Positive detent on selector switch to prevent hang up between positions
- Optically enhanced lenses on pilot lights
- Integrated LED lamp technology

Environment

- UL Type 4/4X/13, IP66 Sealing
- Chemical resistant industrial grade thermoplastic body
- Corrosion and UV resistant

Design

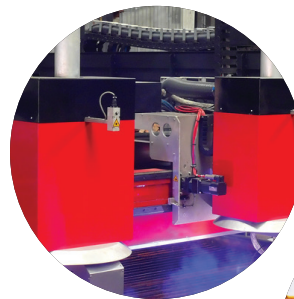
- Modern low profile appearance
- Ergonomic press plates and handles
- Concave press plates on pushbuttons

The D7D Monolithic series is Sprecher + Schuh's price effective range of 22.5 mm control and signaling pilot devices.

Combining most of the features of the standard D7 series, the monolithic series is a range of complete push buttons, pilot lights, selector switches and emergency stop devices that have been assembled in the most used specifications.

Constructed from high quality industrial grade thermoplastic the Monolithic series features a unique one piece body that incorporates both front and rear of panel components into one element that can be ordered from one convenient single catalog number.

With the security of environmental sealing and one piece rear fixing the D7D Monolithic range is the ideal choice for applications where easy and efficient ordering and installation is a priority.



D7D Monolithic Pilot Devices



Push buttons

- Easy installation
- Available with flush or extended cap
- Molded color caps, inscriptions available
- UL type 4/4X/13, IP66

Push Buttons				
Cap Color	Legend Text	Contact Blocks	Flush Catalog Number	Extended Catalog Number
Green	Blank	1NO	D7D-F3X10	
	START	1NO	D7D-F301X10	
	I	1NO	D7D-F306X10	
Red	Blank	1NC	D7D-F4X01	D7D-E4X01
	STOP	1NC	D7D-F402X01	D7D-E402X01
	0	1NC	D7D-F405X01	D7D-E405X01

Cap Colors	Standard Inscriptions	Contact Blocks
White, Black, Green, Red, Yellow, Blue	Start, Stop, Forward, Reverse, I, O, R, →	1NO, 1NC, 1NO & 1NC, 2NO or 2NC

Pilot lights

- Optically enhanced lens style
- Available in six colors:
- Amber, green, red, yellow, blue and clear
- UL Type 4/4X/13, IP66
- INCANDESCENT ILLUMINATION
- Device comes with bulb installed for quick set-up
- Bulb is front-replaceable
- LED ILLUMINATION
- Superior shock and vibration ratings
- Life rating of 100,000 hours
- Leakage current protection up to 3 mA
- Integrated LED

Pilot Lights		
Lens Color	Incandescent Module (Bulb Included)	Integral LED Module
Amber	D7D-P0D ♣	D7D-P0N ♣
Green	D7D-P3D ♣	D7D-P3N ♣
Red	D7D-P4D ♣	D7D-P4N ♣
Yellow	D7D-P5D ♣	D7D-P5N ♣
Blue	D7D-P6D ♣	D7D-P6N ♣
Clear	D7D-P7D ♣	D7D-P7N ♣

Power Module ♣	
Incandescent Module	Integral LED Module
1 - 6V, bulb	3 - 24V AC/DC
2 - 12V, bulb	5 - 120V AC
3 - 24V, bulb	7 - 240V AC
4 - 48V, bulb	
5 - 120V, bulb	



Emergency stops

- Push-pull and twist-to-release in one device
- Non-removable contacts promote safety
- Arrows molded on cap indicate release direction
- Trigger action anti-tease feature
- Externally tamperproof
- 40 mm red mushroom cap
- Non-illuminated
- E-Stops meet EN 418 and EN 60947-5-5 standards
- UL type 4/4X/13, IP66

Emergency Stop		
Cap Color	Contact Blocks	Catalog Number
Red	1NC	D7D-MT44X01
Red	1NO 1NC	D7D-MT44X11
Red	2NC	D7D-MT44X02

Accessories	Catalog Number
	60mm Inscription Ring D7-15YSE112
	Narrow Plastic Guard D7-AMEGY



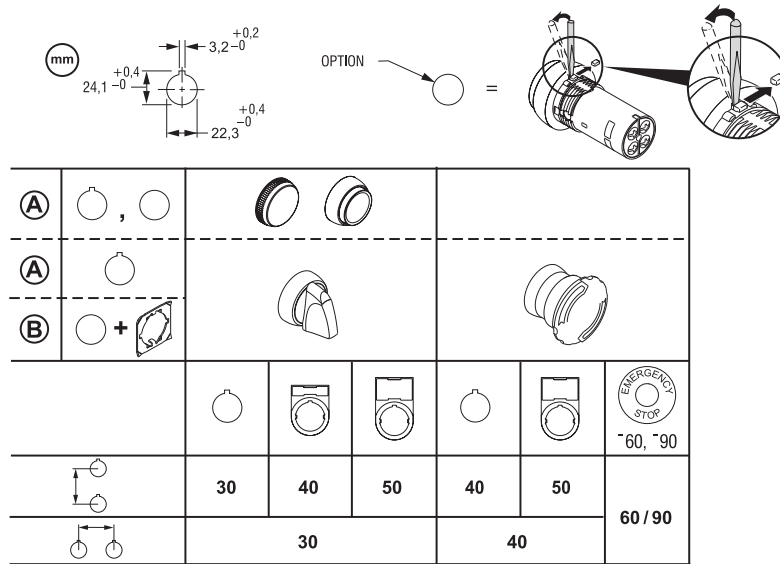
Selector switches

- Positive detent decreases the likelihood of hang-up between positions
- Constant energy solution means vibration or a slight bump should not cause a change in state
- UL type 4/4X/13, IP66

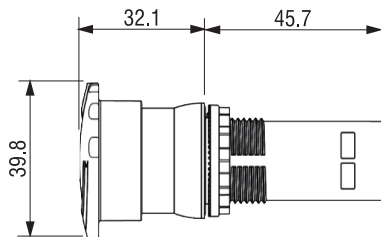
2 Position Selector Switch		
Switching Positions	Contact Block(s)	Catalog Number
	1NO	D7D-SM22X10
	1NC	D7D-SM22X01
	2NO	D7D-SM22X20
	2NC	D7D-SM22X02
	1NO & 1NC	D7D-SM22X11
	1 Contact	D7D-SL22X▼
	2 Contacts	D7D-SL22X▼
	1 Contact	D7D-SR22X▼
	2 Contacts	D7D-SR22X▼

▼ Contact block selection required

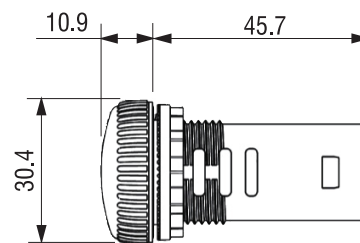
3 Position Selector Switch		
Switching Positions	Contact Block(s)	Catalog Number
	2NO	D7D-SM32X20
	2NC	D7D-SM32X02
	1NO & 1NC	D7D-SM32X11
	2NO	D7D-SL32X20
	2NC	D7D-SL32X02
	1NO & 1NC	D7D-SL32X11
	2NO	D7D-SR32X20
	2NC	D7D-SR32X02
	1NO & 1NC	D7D-SR32X11
	2NO	D7D-SB32X20
	2NC	D7D-SB32X02
	1NO & 1NC	D7D-SB32X11



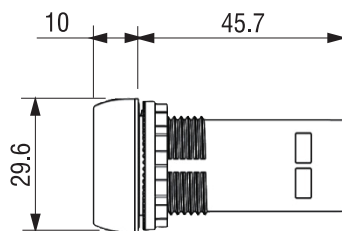
2 Position Push-Pull/Twist-to-Release Mushroom Devices (D7D-MT)



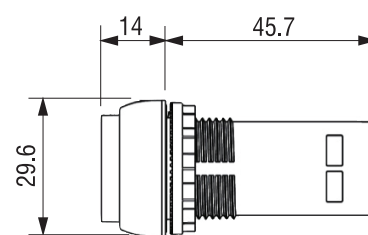
Pilot Light Devices (D7D-P)



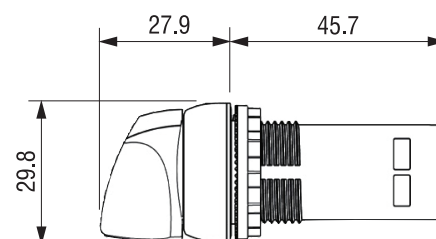
Momentary Pushbutton Device Flush (D7D-F)



Momentary Pushbutton Device Extended (D7D-E)



2 & 3 Position Selector Switch Devices (D7D-S)



For more information, or to contact your Sprecher + Schuh representative, visit www.sprecherschuh.com