



# Orange Express

## Contents

<i>The Orange Express Program</i> .....	2
<b>KWIKstarters II</b> .....	4
<i>KWIKstarters II Enclosure Dimensions</i> .....	9
<b>Enclosed Contactors and Starters</b> .....	11
<b>CA7 Enclosed Contactors</b> .....	12
<b>CAT7 Enclosed Magnetic Motor Starters</b> .....	16
<b>CAT7 Enclosed Combination Magnetic Starters</b> .....	20
<b>NEMA Magnetic Starters</b> .....	23
<b>NEMA MCCB Combination Starters</b> .....	24
<b>NEMA Fusible and Non-Fusible Combination Starters</b> .....	25
<i>Overload Relay Codes &amp; Factory Modifications</i> .....	26
<i>Enclosure Dimensions</i> .....	28
<b>Enclosed KT7 &amp; CX7 Motor Circuit Controllers</b> .....	30
<i>KT7 Manual Combination Controllers</i> .....	30
<i>CX7 Combination Controllers</i> .....	34
<i>Factory Modifications</i> .....	35
<i>Enclosure Dimensions</i> .....	36

Orange Express is a program designed to meet the demand for shipment of enclosed contactors, starters and Type E Self-Protected Manual Motor Controllers in 3 days or less, from the time we receive the order until it is ready for shipment; **GUARANTEED.**

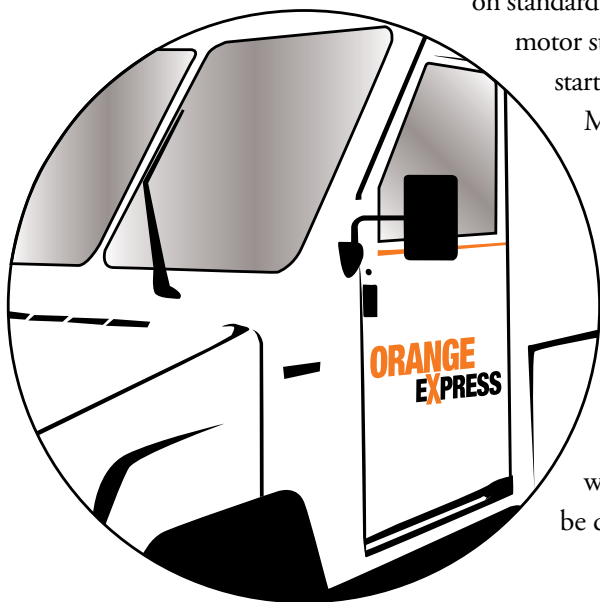


Sprecher + Schuh has shipped stock components under the Platinum and Gold Shipment program for several years while the demands on our Custom Control Panel Shop business has steadily increased. Our Houston and Richmond facilities accommodate customer demand for quick turn around on standard enclosed contactors, manual motor starters, magnetic motor starters and Combo starters.

More stock, more manpower and streamlined logistics are all combined to make it possible for Sprecher + Schuh to guarantee three day shipment for a variety of enclosed products. Check out the details of Orange Express; we are confident you won't be disappointed!

## Getting started

- **Orange Express** orders received by Richmond Customer Service by noon on day one will ship by the end of day three.
- **Orange Express** orders must be clearly identified as an *Orange Express* order.
- **Orange Express** orders must be requested for shipment via 3rd Day, 2nd Day or Next Day Service which will be pre-paid and charged.
- **Orange Express** orders must be complete *with all details* before the three day clock can be started.
- **Orange Express** orders are limited to the enclosed products detailed in this *Orange Express selection Guide* or marked with the OE logo in the full catalog.
- **Orange Express** orders may include up to five items; that's five of the same item or five different line items.
- **Orange Express** orders must utilize established Sprecher + Schuh standard wiring diagrams.



## A variety of enclosed products

*Orange Express* includes the following products as detailed in the *Orange Express selection Guide*:



- Kwikstarters II
- FVNR CA7 Contactors – Type 1 and 12 enclosed
- FVR CA7 Contactors – Type 1 and 12 enclosed
- FVNR CAT7 Magnetic Starters – Type 1, 12 and non-metallic 4X enclosed
- FVR CAUT7 Magnetic Starters – Type 1, 12 and non-metallic 4X enclosed
- FVNR CBT7 Magnetic Starters – Type 1, 12 and non-metallic 4X enclosed
- FVR CBUT7 Magnetic Starters – Type 1, 12 and non-metallic 4X enclosed
- FVNR CATN7 NEMA Size 00, 0, 1 and 2 Magnetic Starters – Type 1, 12 and non-metallic 4X enclosed
- Combo CAT7 & CATN7 MCCB FVNR Magnetic Starters - Type 1, 12 and non-metallic 4X enclosed
- Combo CAT7 Fusible FVNR Magnetic Starters - Type 1, 12 and non-metallic 4X enclosed
- Combo CAT7 Non-Fusible FVNR Magnetic Starters - Type 1, 12 and non-metallic 4X enclosed
- KTA7 Type E Self-Protected Manual Motor Controller – Type IP65, 12, 4 and non-metallic 4X enclosed
- CX7 Type E KTA7 Self-Protected Combination FVNR Controller – Type 4/12 enclosed
- All contactors and starters listed above with AC coil only
- Options - factory installed modifications include:
  - Start – Stop Pushbutton
  - Hand – Off – Auto Selector Switch
  - Forward – Stop – Reverse Pushbutton for FVR starters/contactors
  - Forward – Off – Reverse Selector Switch for FVR starters/contactors
  - Pilot Lights (Two Maximum)
  - Additional interlocks
  - Surge Suppressor
  - Control Power Transformer (with primary and secondary fusing as required)



## Our Guarantee

*Orange Express* orders not shipped by day three, for some unforeseen reason, will be shipped via premium freight at our expense; that's Sprecher + Schuh's guarantee of quality service and performance.

#### KWIKstarters II with CT7N or CEP7 Overload Relays; ①⑤

Cover Control/ Enclosure	Maximum Horsepower						Total Aux. Contacts Installed		cUL Approved-Type 1/12/4/4X IP66	Price	Dimension Code
	Single Ø		Three Ø				NO	NC			
	115V	230V	200V	230V	460V	575V			Catalog Number		
<b>KWIKstarter with Start &amp; Raised Stop ④⑤</b>											
	1/2	1 1/2	~	~	~	~	1 ②	0	CBK7-9-*-◆-P2	302	Q1
	~	~	2	2	5	7 1/2			CAK7-9-*-◆-P2		
	1/2	2	~	~	~	~	1 ②	0	CBK7-12-*-◆-P2	338	Q1
	~	~	3	3	7 1/2	10			CAK7-12-*-◆-P2		
	1	3	~	~	~	~	1 ②	0	CBK7-16-*-◆-P2	363	Q1
	~	~	5	5	10	15			CAK7-16-*-◆-P2		
	2	3	~	~	~	~	1 ②	0	CBK7-23-*-◆-P2	390	Q1
	~	~	5	7 1/2	15	15			CAK7-23-*-◆-P2		
<b>KWIKstarter with Reset</b>											
	1/2	1 1/2	~	~	~	~	1	0	CBK7-9-*-◆-P0	276	Q1
	~	~	2	2	5	7 1/2			CAK7-9-*-◆-P0		
	1/2	2	~	~	~	~	1	0	CBK7-12-*-◆-P0	313	Q1
	~	~	3	3	7 1/2	10			CAK7-12-*-◆-P0		
	1	3	~	~	~	~	1	0	CBK7-16-*-◆-P0	338	Q1
	~	~	5	5	10	15			CAK7-16-*-◆-P0		
	2	3	~	~	~	~	1	0	CBK7-23-*-◆-P0	365	Q1
	~	~	5	7 1/2	15	15			CAK7-23-*-◆-P0		

ORANGE EXPRESS

Enc. Contactors & Starters

KWIK

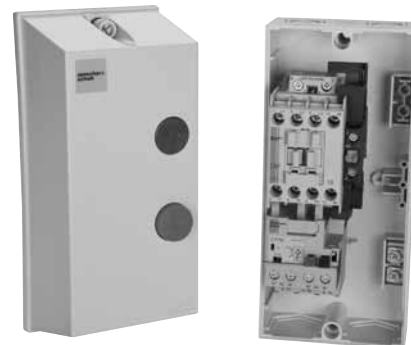
#### Coil Codes

A.C. Coil Code	Voltage Range		Control Source	
	50 Hz	60 Hz	CBK7	CAK7
24Z	24V	24V	Separate	Separate
120	110V	120V	Common	Separate
220W	~	208V-240V	Common	Common
480	440V	480V	~	Common

#### Control Circuit Note

**Common:** Coils are assumed to be common with the line voltage and will be connected to the line source (L1-L2) per the table.

**Separate:** Coils are assumed to be from a separate source and will not be connected to the line source per the table.




#### Ordering Instructions

Specify Catalog Number	
Replace (*) with Coil Code Replace (◆) with O/L Relay	<b>See this page See page 8</b>
<b>Important Note:</b> KWIKstarters II are only designed to accommodate CT7N Thermal Overload Relays or CEP7 Second Generation Solid State Overload Relays. Select O/L Relay Code from page C8.	

- ① KWIKstarters II are designed for three-wire control circuits. Two-wire (maintain) control can be accomplished by adding pushbutton latch KS7-PLA.
- ② A special design NO auxiliary contact (Cat.# KS7-PCK) is used as the holding circuit interlock, as well as, the START button interface. It is not available for other use.
- ③ Refer to page 10 for dimensional information.
- ④ STOP button also functions as RESET button. Plastic Bezel is standard.
- ⑤ Use CT7N or CEP7-ED/CEP7-EE Second Generation overload.

**KWIKstarters II with CT7N or CEP7 Overload Relays with H-O-A and Light ①②③④⑤⑥**

Cover Control/ Enclosure	Maximum Horsepower						Total Aux. Contacts Installed		cUL Approved- Type 1/12/4/4X IP66	Catalog Number	Price	Dimension Code ④
	Single Ø		Three Ø									
	115V	230V	200V	230V	460V	575V	NO	NC				
	<b>KWIKstarter with Reset and H-O-A Selector Switch and Light with AC Coil</b>											
	1/2	1 1/2	~	~	~	~	1	0	CBK7-9-*-◆-P0+1R7	380	Q1	
	~	~	2	2	5	7 1/2			CAK7-9-*-◆-P0+1R7			
	1/2	2	~	~	~	~	1	0	CBK7-12-*-◆-P0+1R7	417	Q1	
	~	~	3	3	7 1/2	10			CAK7-12-*-◆-P0+1R7			
	1	3	~	~	~	~	1	0	CBK7-16-*-◆-P0+1R7	442	Q1	
	~	~	5	5	10	15			CAK7-16-*-◆-P0+1R7			
	2	3	~	~	~	~	1	0	CBK7-23-*-◆-P0+1R7	469	Q1	
	~	~	5	7 1/2	15	15			CAK7-23-*-◆-P0+1R7			

ORANGE  
EXPRESS

Enc. Contactors  
& Starters

KWIK

**Coil Codes**

A.C. Coil Code	Voltage Range		Control Source	
	50 Hz	60 Hz	CBK7	CAK7
24Z	24V	24V	Separate	Separate
120	110V	120V	Common	Separate
220W	~	208V-240V	Common	Common

**Control Circuit Note**

**Common:** Coils and pilot devices in the control circuit are assumed to be common with the line voltage and will be connected to the line source (L1-L2) per the table.



**Separate:** Coils and pilot devices in the control circuit are assumed to be from a separate source and will not be connected to the line source per the table. Line Voltage not listed: (i.e.: 480 and 575 VAC) require a separate control source (i.e.: 120 VAC). D7D pilot devices are rated 300 VAC maximum.

**Ordering Instructions**

Specify Catalog Number	
Replace (*) with Coil Code Replace (◆) with O/L Relay	<b>See this page See page C8</b>
<b>Important Note:</b> KWIKstarters II are only designed to accommodate CT7N Thermal Overload Relays or CEP7 Second Generation Solid State Overload Relays. Select O/L Relay Code from page 8.	

- ① This is a factory assembly. The KS7-C0S1 does not include knock-outs for field assembly of this starter.
- ② Uses D7D-P4N\_ Red Monolithic "Run" pilot light with LED bulb. Pilot light voltage to match coil voltage for 24, 120, 240 VAC control. Red "Run" Light can be changed for Green. Change +1R7 to +1G7. For example, CAK7-9-\*-◆-P0+1R7 becomes CAK7-9-\*-◆-P0-1G7.
- ③ Uses D7D-SM32x20 Monolithic 3-position selector switch for maintain control, HAND-OFF-AUTO function with legend plate.
- ④ Refer to page 9 for wiring diagram and dimensional information. This is a clam-shell enclosure design with wires to cover controls.
- ⑤ Uses CT7N or CEP7-ED/CEP7-EE Second Generation overload.
- ⑥ One NO auxilliary for customer use. There is no room for additional auxilliaries.

### NEMA KWIKstarters II with CT7N or CEP7 Overload Relays ①⑤

Cover Control/ Enclosure	NEMA Size	Maximum Horsepower						Total Aux. Contacts Installed		cUL Approved- Type 1/12/4/4X IP66	Catalog Number	Price	Dimension Code
		Single Ø		Three Ø				NO	NC				
		115V	230V	200V	230V	460V	575V						
<b>KWIKstarter with Start &amp; Raised Stop with AC Coil ④</b>													
	00	1/3	1	~	~	~	~	1 ②	0	CBKN7-12-*-◆-P2	338	Q1	
		~	~	1-1/2	1-1/2	2	2			CAKN7-12-*-◆-P2			
	0	1	2	~	~	~	~	1 ②	0	CBKN7-16-*-◆-P2	363	Q1	
		~	~	3	3	5	5			CAKN7-16-*-◆-P2			
<b>KWIKstarter with Reset with AC Coil</b>													
	00	1/3	1	~	~	~	~	1 ②	0	CBKN7-12-*-◆-P0	313	Q1	
		~	~	1-1/2	1-1/2	2	2			CAKN7-12-*-◆-P0			
	0	1	2	~	~	~	~	1 ②	0	CBKN7-16-*-◆-P0	338	Q1	
		~	~	3	3	5	5			CAKN7-16-*-◆-P0			

ORANGE EXPRESS  
Enc. Contactors & Starters

KWIK

### Coil Codes

A.C. Coil Code	Voltage Range		Control Source	
	50 Hz	60 Hz	CBK7	CAK7
24Z	24V	24V	Separate	Separate
120	110V	120V	Common	Separate
220W	~	208V-240V	Common	Common
480	440V	480V	~	Common

### Control Circuit Note

**Common:** Coils are assumed to be common with the line voltage and will be connected to the line source (L1-L2) per the table.


**Separate:** Coils are assumed to be from a separate source and will not be connected to the line source per the table.

### Ordering Instructions

Specify Catalog Number	
Replace (*) with Coil Code Replace (◆) with O/L Relay	<b>See this page See page 8</b>
<b>Important Note:</b> KWIKstarters II are only designed to accommodate CT7N Thermal Overload Relays or CEP7 Second Generation Solid State Overload Relays. Select O/L Relay Code from page 8.	

- ① KWIKstarters II are designed for three-wire control circuits. Two-wire (maintain) control can be accomplished by adding pushbutton latch KS7-PLA.
- ② A special design NO auxiliary contact (Cat.# KS7-PCK) is used as the holding circuit interlock, as well as, the START button interface. It is not available for other use.
- ③ Refer to page 10 for dimensional information.
- ④ STOP button also functions as RESET button. Plastic Bezel is standard.
- ⑤ Use CT7N or CEP7-ED/CEP7-EE Second Generation overload.

**NEMA KWIKstarters II with CT7N or CEP7 Overload Relays with H-O-A and Light ①②③④⑤**

Cover Control/ Enclosure	NEMA Size	Maximum Horsepower						Total Aux. Contacts Installed		cUL Approved-Type 1/12/4/4X IP66	Catalog Number	Price	Dimension Code ④
		Single Ø		Three Ø				NO	NC				
		115V	230V	200V	230V	460V	575V						
	<b>NEMA KWIKstarter with Reset and H-O-A Selector Switch and Light with AC Coil</b>												
	00	1/3	1	~	~	~	~	1 ⑥	0	CBKN7-12-*-◆-P0+1R7	417	Q1	
		~	~	1-1/2	1-1/2	2	2			CAKN7-12-*-◆-P0+1R7			
	0	1	2	~	~	~	~	1 ⑥	0	CBKN7-16-*-◆-P0+1R7	442	Q1	
		~	~	3	3	5	5			CAKN7-16-*-◆-P0+1R7			

ORANGE EXPRESS

Enc. Contactors & Starters

KWIK

**Coil Codes**

A.C. Coil Code	Voltage Range		Control Source	
	50 Hz	60 Hz	CBK7	CAK7
24Z	24V	24V	Separate	Separate
120	110V	120V	Common	Separate
220W	~	208V-240V	Common	Common

**Control Circuit Note**

**Common:** Coils and pilot devices in the control circuit are assumed to be common with the line voltage and will be connected to the line source (L1-L2) per the table.

**Separate:** Coils and pilot devices in the control circuit are assumed to be from a separate source and will not be connected to the line source per the table. Line Voltage not listed: (i.e.: 480 and 575 VAC) require a separate control source (i.e.: 120 VAC). D7D pilot devices are rated 300 VAC maximum.

**Ordering Instructions**

Specify Catalog Number	
Replace (*) with Coil Code Replace (◆) with O/L Relay	<b>See this page See page 8</b>
<b>Important Note:</b> KWIKstarters II are only designed to accommodate CT7N Thermal Overload Relays or CEP7 Second Generation Solid State Overload Relays. Select O/L Relay Code from page 8.	

- ① This is a factory assembly. The KS7-C0S1 does not include knock-outs for field assembly of this starter.
- ② Uses D7D-P4N\_Red Monolithic "Run" pilot light with LED bulb. Pilot light voltage to match coil voltage for 24, 120, 240 VAC control. Red "Run" Light can be changed for Green. Change +1R7 to +1G7. For example, CAKN7-9-\*-◆-P0+1R7 becomes CAKN7-9-\*-◆-P0-1G7.
- ③ Uses D7D-SM32x20 Monolithic 3-position selector switch for maintain control, HAND-OFF-AUTO function with legend plate.
- ④ Refer to page 9 for wiring diagram and 10 for dimensional information. This is a clam-shell enclosure design with wires to cover controls.
- ⑤ Uses CT7N or CEP7-ED/CEP7-EE Second Generation overload.
- ⑥ One NO auxilliary for customer use. There is no room for additional auxilliaries.

#### KWIKstarters II with CT7N Bimetallic Overload Relays ❶

For use with Kwikstarter...	Amp Range	Overload Relay Code (◆)	Catalog Number (of Overload Relay used)	Price Adder
CAK7-9...CAK7-23 and CBK7-9...CBK7-23  Frame "A"	0.10...0.16	AA16	CT7N-23-A16	Standard
	0.16...0.25	AA25	CT7N-23-A25	Standard
	0.25...0.40	AA40	CT7N-23-A40	Standard
	0.35...0.50	AA50	CT7N-23-A50	Standard
	0.45...0.63	AA63	CT7N-23-A63	Standard
	0.55...0.80	AA80	CT7N-23-A80	Standard
	0.75...1.0	AB10	CT7N-23-B10	Standard
	0.90...1.3	AB13	CT7N-23-B13	Standard
	1.1...1.6	AB16	CT7N-23-B16	Standard
	1.4...2.0	AB20	CT7N-23-B20	Standard
	1.8...2.5	AB25	CT7N-23-B25	Standard
	2.3...3.2	AB32	CT7N-23-B32	Standard
	2.9...4.0	AB40	CT7N-23-B40	Standard
	3.5...4.8	AB48	CT7N-23-B48	Standard
	4.5...6.3	AB63	CT7N-23-B63	Standard
	5.5...7.5	AB75	CT7N-23-B75	Standard
	7.2...10	AC10	CT7N-23-C10	Standard
	9.0...12.5	AC12	CT7N-23-C12	Standard
	11.3...16	AC16	CT7N-23-C16	Standard
	15...20	AC20	CT7N-23-C20	Standard
17.5...21.5	AC21	CT7N-23-C21	Standard	
21...25	AC25	CT7N-23-C25	Standard	

#### KWIKstarters II with CEP7 Solid State Overload Relay 3-Phase Application ❷❸

For use with Kwikstarter...	Amp Range	Overload Relay Code (◆)	Catalog Number (of Overload Relay used)	Price Adder
<b>3-Phase / Manual Reset / Class 10</b>				
CAK7-9...CAK7-23	0.1...0.5	D1AB	CEP7-ED1AB	+9
	0.2...1.0	D1BB	CEP7-ED1BB	+9
	1.0...5.0	D1CB	CEP7-ED1CB	+9
	3.2...16	D1DB	CEP7-ED1DB	+9
	5.4...27	D1EB	CEP7-ED1EB	+9
<b>3-Phase / Selectable Function and Class</b>				
CAK7-9...CAK7-23	0.1...0.5	EAB	CEP7-EEAB	+17
	0.2...1.0	EBB	CEP7-EEBB	+17
	1.0...5.0	ECB	CEP7-EECB	+17
	3.2...16	EDB	CEP7-EEDB	+17
	5.4...27	EEB	CEP7-EEEB	+17

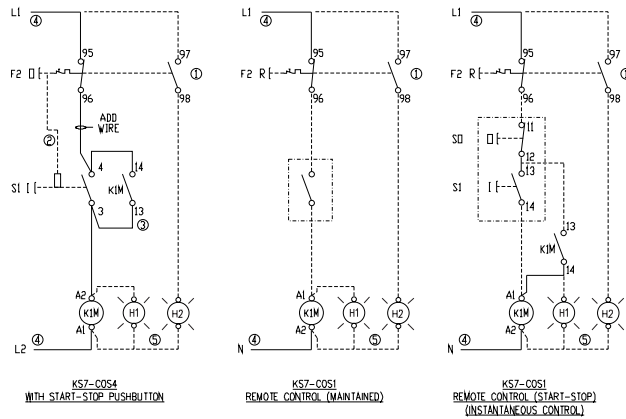
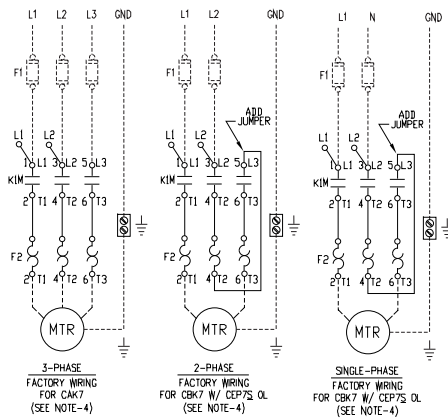
#### KWIKstarters II with CEP7 Solid State Overload Relay 1-Phase Application ❷❸

For use with Kwikstarter...	Amp Range	Overload Relay Code (◆)	Catalog Number (of Overload Relay used)	Price Adder
<b>1-Phase / Selectable Function and Class</b>				
CBK7-9...CBK7-23	1.0-5.0	EPB	CEP7S-EEPB	+15
	3.2-16	ERB	CEP7S-EERB	+15
	5.2-27	ESB	CEP7S-EESB	+15

- ❶ If using CT7N in single phase application with CBK7-9...16, wire per drawing on page 9.
- ❷ CEP7 Overloads are available for use in KWIKStarters if the premium features are required (see Section B of full catalog).
- ❸ 3-phase CEP7-ED or CEP7-EE units are only designed for 3∅ applications. Single phase CEP7S units are only designed for 1∅ applications. If using CEP7S, wire per drawing on page 9.

### KWIKstarter II (in enclosure KS7-COS1/COS4)

CUSTOMER MUST PROVIDE PROPER BRANCH CIRCUIT PROTECTION (F1)  
SEE THE APPLICATION INSTRUCTION SHEET - COMPONENT SELECTION TABLES  
FOR MAX. FUSE SIZE & CLASS AND APPLICABLE SHORT CIRCUIT RATING  
(USE 75°C COPPER WIRE ONLY)



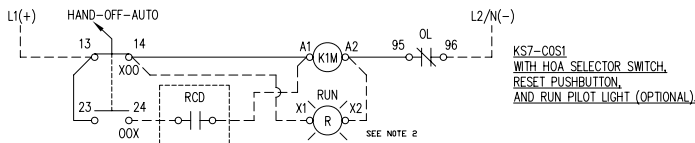
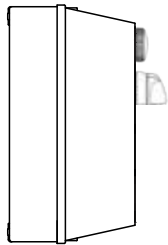
THIS DRAWING IS FOR THE FOLLOWING ENCLOSURES:  
KS7-COS4 with integrated START-STOP push buttons  
KS7-COS1 with integrated RESET push button

**NOTES:**

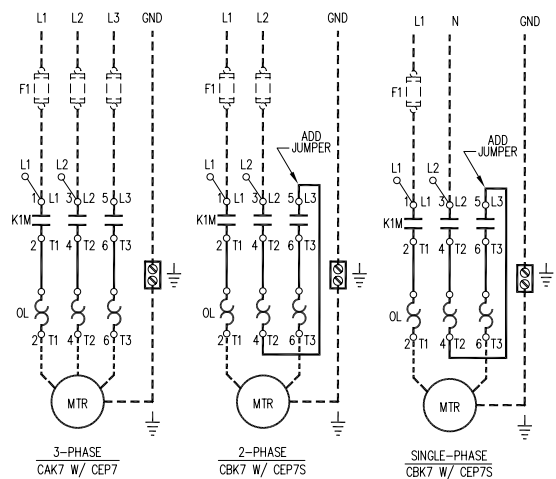
- 1) MECHANICAL LATCH KS7-PLA FOR MAINTAINED CONTROL (OPTIONAL).
- 2) START CONTACT KIT KS7-POK (INCLUDED) MOUNTS ON THE RIGHT SIDE WITH MOLDED PRE-FORMED JUMPERS.
- 3) DO NOT WIRE CONTROLS CIRCUIT TO LINE SIDE OF CONTACTOR WHEN COIL VOLTAGE IS 120V OR LESS. (FACTORY WIRING STANDARD)
- 4) OPTIONAL PILOT LIGHTS.

### KWIKstarter II (in enclosure KS7-COS1) with HOA option

HAND-OFF-AUTO with Pilot Light



CUSTOMER WILL PROVIDE BRANCH CIRCUIT PROTECTION (F1)  
SEE THE APPLICATION INSTRUCTION SHEET - COMPONENT SELECTION TABLES  
FOR MAX. FUSE SIZE, CLASS, AND APPLICABLE SHORT CIRCUIT RATING  
(USE 75°C COPPER WIRE ONLY)



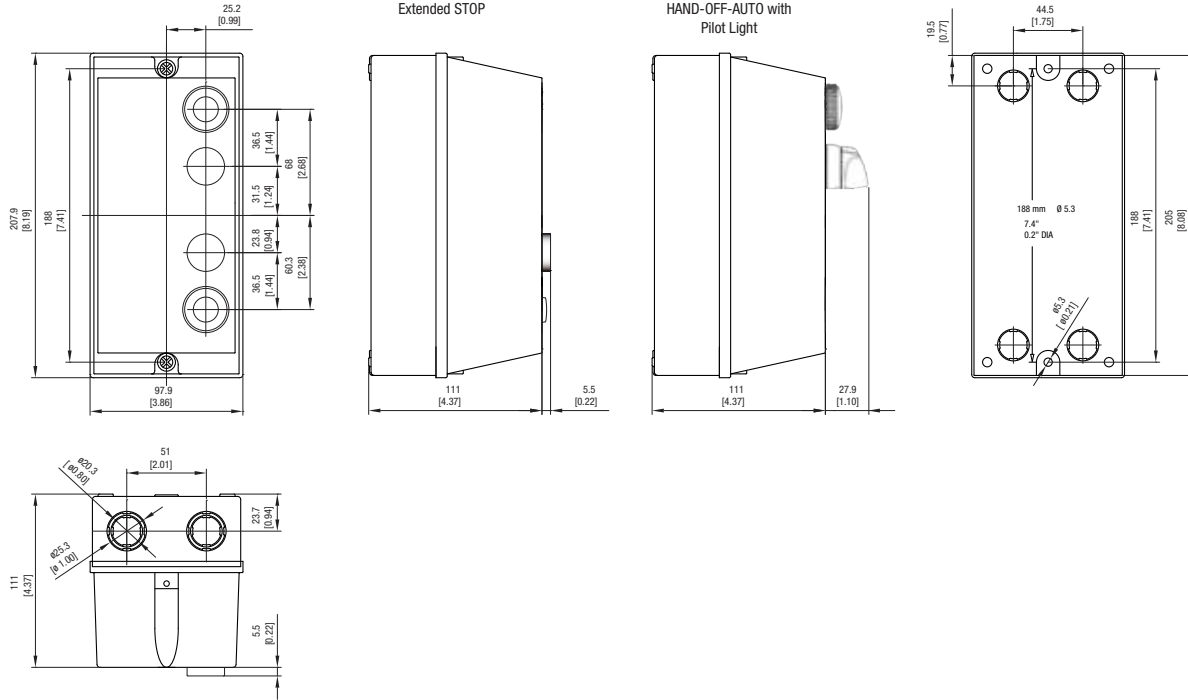
A.C. Coil Code	Voltage Range		Control Source	
	50 Hz	60 Hz	CBK7	CAK7
24Z	24V	24V	Separate	Separate
120	110V	120V	Common	Separate
208	-	208V	-	Common
220W	-	208V-240V	Common	Common
240	220V	240V	Common	Common
D.C. Coil Code	Voltage Range		Control Source	
	VDC		CBK7	CAK7
24E	24V		Separate	Separate

**NOTES:**

1. RCD = REMOTE CONTROL DEVICE (BY OTHERS). WIRE RCD TO TERMINAL 24 ON THE H-O-A SEL. SW. AND TERMINAL A1 ON THE CONTACTOR.
2. DASHED LINES - - - - - INDICATE WIRING PROVIDED IN THE FIELD.
3. DOOR WIRES TO BE SECURED WITH ADHESIVE MOUNTS AND SPIRAL WRAPPED.

**KWIKstarter II Enclosure KS7-COS1/COS4 (Dimension Code Q1)**

Dimensions are in millimeters (inches). Dimensions not intended for manufacturing purposes.



ORANGE EXPRESS  
Enc. Contactors & Starters

KWIK

## ***Enclosed Contactors and Starters***

Open & enclosed pre-wired starters and enclosed contactors for any application

### **Built with quality and pride**

Every panel built by Sprecher + Schuh is meticulously designed and constructed. Where possible, all panels are laid out with generous wiring space. Control wiring is neatly bundled and tied to the backpan. Outsourced components are industrial control quality from namebrand manufacturers. Control wiring and device function is electrically tested before the panel leaves our facility.



Enclosed Contactors



Enclosed Starters



Enclosed Starters with Circuit Breakers or Fuses

### Three Phase, Non-Reversing CA7

Continuous Amp Rating - UL/CSA -	Maximum Horsepower Three Phase				Auxiliary Contacts per Contactor ②		Type 1 (M1) General Purpose	Price	D I M ①	Type 12, (M12) Industrial Dusttight	Price	D I M ①
	Enclosed	200V	230V	460V	575V	NO	NC			Catalog Number		
25	2	2	5	7.5	1	0	CA7-9-*-G0	218	A ③	CA7-9-*-D0	319	L
25	3	3	7.5	10	1	0	CA7-12-*-G0	252	A ③	CA7-12-*-D0	352	L
30	5	5	10	15	1	0	CA7-16-*-G0	268	A ③	CA7-16-*-D0	368	L
30	5	7.5	15	15	1	0	CA7-23-*-G0	285	A ③	CA7-23-*-D0	386	L
55	7.5	10	20	25	1	0	CA7-30-*-G0	335	A ③	CA7-30-*-D0	436	L
60	10	10	25	30	1	0	CA7-37-*-G0	377	A ③	CA7-37-*-D0	478	L
75	10	15	30	30	1	0	CA7-43-*-G0	537	A ③	CA7-43-*-D0	570	L
90	15	20	40	50	1	0	CA7-60-*-G0	578	B ③	CA7-60-*-D0	620	M
90	20	25	50	60	1	0	CA7-72-*-G0	637	B ③	CA7-72-*-D0	670	M
100	25	30	60	60	1	0	CA7-85-*-G0	696	B ③	CA7-85-*-D0	738	M
120	30	30	75	75	1	0	CA7-97-*-G0	876	B ③	CA7-97-*-D0	919	O

**NOTE:** Catalog numbers, list prices and enclosure dimensions reflect contactors with AC coils only. DC coils are not included in the Orange Express program. See full catalog for details.

### Coil Codes

A.C. Coil Code	Voltage Range	
	50 Hz	60 Hz
24Z	24V	24V
120	110V	120V
220W	~	208V-240V
480	440V	480V
600	550V	600V

### Ordering Instructions

Specify Catalog Number	
Replace (*) with Coil Code Factory Modifications available	<b>Refer to this page</b> <b>Refer to pages 26</b>

- ① Refer to page C81-85 of full catalog for dimensional information.
- ② Contactors are equipped with number and type of auxiliaries indicated. See Modification Section to order additional or different auxiliary contacts.
- ③ "A" and "B" Clam shell enclosures have been replaced with two new hinged cover designs. See pages C65.1, C81 and C83 of full catalog.

### Three Phase, Reversing CAU7

Continuous Amp Rating - UL/CSA -	Maximum Horsepower Three Phase				Auxiliary Contacts per Contactor ②		Type 1 (M1) General Purpose	Price	D I M ①	Type 12, (M12) Industrial Dusttight	Price	D I M ①
	Enclosed	200V	230V	460V	575V	NO	NC ③			Catalog Number		
25	2	2	5	7.5	1	1	CAU7-9-* -G0	580	A ④	CAU7-9-* -D0	639	M
25	3	3	7.5	10	1	1	CAU7-12-* -G0	654	A ④	CAU7-12-* -D0	704	M
30	5	5	10	15	1	1	CAU7-16-* -G0	696	A ④	CAU7-16-* -D0	746	M
30	5	7.5	15	15	1	1	CAU7-23-* -G0	715	A ④	CAU7-23-* -D0	791	M
55	7.5	10	20	25	1	1	CAU7-30-* -G0	833	A ④	CAU7-30-* -D0	883	M
60	10	10	25	30	1	1	CAU7-37-* -G0	917	A ④	CAU7-37-* -D0	1043	M
75	10	15	30	30	1	1	CAU7-43-* -G0	984	B ④	CAU7-43-* -D0	1111	M
90	15	20	40	50	1	1	CAU7-60-* -G0	1313	C	CAU7-60-* -D0	1338	O
90	20	25	50	60	1	1	CAU7-72-* -G0	1430	C	CAU7-72-* -D0	1456	O
100	25	30	60	60	1	1	CAU7-85-* -G0	1540	C	CAU7-85-* -D0	1565	O
120	30	30	75	75	1	1	CAU7-97-* -G0	1780	C	CAU7-97-* -D0	1805	O

**NOTE:** Catalog numbers, list prices and enclosure dimensions reflect contactors with AC coils only. DC coils are not included in the Orange Express program. See full catalog for details.

ORANGE EXPRESS

Enc. Contactors & Starters

### Coil Codes

A.C. Coil Code	Voltage Range	
	50 Hz	60 Hz
24Z	24V	24V
120	110V	120V
220W	~	208V-240V
480	440V	480V
600	550V	600V

### Ordering Instructions

Specify Catalog Number	Refer to this page Refer to pages 26
Replace (*) with Coil Code Factory Modifications available	

- ① Refer to page C81-85 in full catalog for dimensional information.
- ② Contactors are equipped with number and type of auxiliaries indicated. See Modification Section to order additional or different auxiliary contacts.
- ③ One N.C. auxiliary contact is used for electrical interlocking. On CAU7 reversing contactors, the N.C. contact comes from the Mechanical/Electrical Interlock unit (Cat # CM7-02).
- ④ "A" and "B" Clam shell enclosures have been replaced with two new hinged cover designs. See pages C65.1, C81 and C83 in full catalog.

#### Single Phase, Non-Reversing CB7

Continuous Amp Rating - UL/CSA - Enclosed	Maximum Horsepower Single Ø		Auxiliary Contacts per Contactor ②		Type 1 (M1) General Purpose	Price ①	D I M	Type 12 (M12) Industrial Dusttight	Price ①	D I M
	115V	230V	NO	NC	Catalog No.			Catalog No.		
25	1/2	1 1/2	1	0	CB7- 9-* -GO	218	A ③	CB7- 9-* -DO	319	L
25	1/2	2	1	0	CB7- 12-* -GO	252	A ③	CB7- 12-* -DO	353	L
30	1	3	1	0	CB7- 16-* -GO	269	A ③	CB7- 16-* -DO	370	L
30	2	3	1	0	CB7- 23-* -GO	286	A ③	CB7- 23-* -DO	387	L
55	2	5	1	0	CB7- 30-* -GO	336	A ③	CB7- 30-* -DO	437	L
60	3	5	1	0	CB7- 37-* -GO	378	A ③	CB7- 37-* -DO	479	L
75	3	7 1/2	1	0	CB7- 43-* -GO	538	A ③	CB7- 43-* -DO	570	L
90	5	10	1	0	CB7- 60-* -GO	580	B ③	CB7- 60-* -DO	622	M
90	5	15	1	0	CB7- 72-* -GO	639	B ③	CB7- 72-* -DO	673	M
100	7 1/2	15	1	0	CB7- 85-* -GO	698	B ③	CB7- 85-* -DO	740	M

**NOTE:** Catalog numbers, list prices and enclosure dimensions reflect contactors with AC coils only. DC coils are not included in the Orange Express program. See full catalog for details.

ORANGE EXPRESS

Enc. Contactors & Starters

#### Coil Codes

A.C. Coil Code	Voltage Range	
	50 Hz	60 Hz
24Z	24V	24V
120	110V	120V
220W	~	208V-240V
480	440V	480V
600	550V	600V

#### Ordering Instructions

Specify Catalog Number	Refer to this page Refer to pages 26
Replace (*) with Coil Code Factory Modifications available	

- ① Refer to page C81-85 of full catalog for dimensional information.
- ② Contactors are equipped with number and type of auxiliaries indicated. See Modification Section to order additional or different auxiliary contacts.
- ③ "A" and "B" Clam shell enclosures have been replaced with two new hinged cover designs. See pages C65.1, C81 and C83 in full catalog.

**Single Phase, Reversing CBUR7 (Reconnectable Winding - Three Lead Motor)**

Continuous Amp Rating - UL/CSA -	Maximum Horsepower Single Ø		Auxiliary Contacts per Contactor ②		Type 1 (M1) General Purpose	Price ①	D I M	Type 12 (M12) Industrial Dusttight	Price ①	D I M
	Enclosed	115V	230V	NO						
25	1/2	1 1/2	1	1	CBUR7-9-*-GO	580	A ④	CBUR7-9-*-DO	639	M
25	1/2	2	1	1	CBUR7-12-*-GO	656	A ④	CBUR7-12-*-DO	707	M
30	1	3	1	1	CBUR7-16-*-GO	698	A ④	CBUR7-16-*-DO	749	M
30	2	3	1	1	CBUR7-23-*-GO	715	A ④	CBUR7-23-*-DO	791	M
55	2	5	1	1	CBUR7-30-*-GO	833	A ④	CBUR7-30-*-DO	883	M

**Single Phase, Reversing CBUS7 (Series Winding – Four Lead Repulsion Induction Motor)**

Continuous Amp Rating - UL/CSA -	Maximum Horsepower Single Ø		Auxiliary Contacts per Contactor ②		Type 1 (M1) General Purpose	Price ①	D I M	Type 12 (M12) Industrial Dusttight	Price ①	D I M
	Enclosed	115V	230V	NO						
25	1/2	1 1/2	1	1	CBUS7-9-*-GO	580	A ④	CBUS7-9-*-DO	639	M
25	1/2	2	1	1	CBUS7-12-*-GO	656	A ④	CBUS7-12-*-DO	707	M
30	1	3	1	1	CBUS7-16-*-GO	698	A ④	CBUS7-16-*-DO	749	M
30	2	3	1	1	CBUS7-23-*-GO	715	A ④	CBUS7-23-*-DO	791	M
55	2	5	1	1	CBUS7-30-*-GO	833	A ④	CBUS7-30-*-DO	883	M

**Single Phase, Reversing CBUP7 (Parallel Winding – Four Lead Capacitor or Split Phase Motor)**

Continuous Amp Rating - UL/CSA -	Maximum Horsepower Single Ø		Auxiliary Contacts per Contactor ②		Type 1 (M1) General Purpose	Price ①	D I M	Type 12 (M12) Industrial Dusttight	Price ①	D I M
	Enclosed	115V	230V	NO						
25	1/2	1 1/2	1	1	CBUP7-9-*-GO	580	A ④	CBUP7-9-*-DO	639	M
25	1/2	2	1	1	CBUP7-12-*-GO	656	A ④	CBUP7-12-*-DO	707	M
30	1	3	1	1	CBUP7-16-*-GO	698	A ④	CBUP7-16-*-DO	749	M
30	2	3	1	1	CBUP7-23-*-GO	715	A ④	CBUP7-23-*-DO	791	M
55	2	5	1	1	CBUP7-30-*-GO	833	A ④	CBUP7-30-*-DO	883	M

**NOTE:** Catalog numbers, list prices and enclosure dimensions reflect contactors with AC coils only. DC coils are not included in the Orange Express program. See full catalog for details.

**Coil Codes**

A.C. Coil Code	Voltage Range	
	50 Hz	60 Hz
24Z	24V	24V
120	110V	120V
220W	~	208V-240V
480	440V	480V
600	550V	600V

**Ordering Instructions**

Specify Catalog Number	<b>Refer to this page Refer to pages 26</b>
Replace (*) with Coil Code Factory Modifications available	

- ① Refer to page C81-85 for full catalog or dimensional information.
- ② Contactors are equipped with number and type of auxiliaries indicated. See Modification Section to order additional or different auxiliary contacts.
- ③ One N.C. auxiliary contact is used for electrical interlocking. On CBU reversing contactors, the N.C. contact comes from the Mechanical/Electrical Interlock unit (Cat # CM7-02).
- ④ "A" and "B" Clam shell enclosures have been replaced with two new hinged cover designs. See pages C65.1, C81 and C83 in full catalog.

#### Three Phase, Non-Reversing CAT7

Maximum Horsepower Three Phase				Auxiliary Contacts per Contactor ②		Type 1 (M1) General Purpose	Price ①	D I M	Type 12 (M12) Industrial Dusttight	Price ①	D I M	Type 4X (F4) Watertight Corrosion Resistant Non-metallic	Price ①	D I M
200V	230V	460V	575V	NO	NC	Catalog No.			Catalog No.			Catalog No.		
2	2	5	7 1/2	1	0	CAT7-9-*-◆-GO	303	A ③	CAT7-9-*-◆-DO	429	L	CAT7-9-*-◆-CO	454	S1
3	3	7 1/2	10	1	0	CAT7-12-*-◆-GO	336	A ③	CAT7-12-*-◆-DO	462	L	CAT7-12-*-◆-CO	488	S1
5	5	10	15	1	0	CAT7-16-*-◆-GO	361	A ③	CAT7-16-*-◆-DO	488	L	CAT7-16-*-◆-CO	513	S1
5	7 1/2	15	15	1	0	CAT7-23-*-◆-GO	378	A ③	CAT7-23-*-◆-DO	505	L	CAT7-23-*-◆-CO	530	S1
7 1/2	10	20	25	1	0	CAT7-30-*-◆-GO	462	A ③	CAT7-30-*-◆-DO	606	L	CAT7-30-*-◆-CO	732	U1
10	10	25	30	1	0	CAT7-37-*-◆-GO	505	A ③	CAT7-37-*-◆-DO	648	L	CAT7-37-*-◆-CO	782	U1
10	15	30	30	1	0	CAT7-43-*-◆-GO	595	A ③	CAT7-43-*-◆-DO	789	M	CAT7-43-*-◆-CO	841	U1
15	20	40	50	1	0	CAT7-60-*-◆-GO	791	B ③	CAT7-60-*-◆-DO	967	O	CAT7-60-*-◆-CO	951	U1
20	25	50	60	1	0	CAT7-72-*-◆-GO	841	B ③	CAT7-72-*-◆-DO	1026	O	CAT7-72-*-◆-CO	1010	U1
25	30	60	60	1	0	CAT7-85-*-◆-GO	909	B ③	CAT7-85-*-◆-DO	1085	O	CAT7-85-*-◆-CO	1077	U1
30	30	75	75	1	0	CAT7-97-*-◆-GO	1194	O	CAT7-97-*-◆-DO	1223	O	CAT7-97-*-◆-CO	1598	V1

**NOTE:** Catalog numbers, list prices and enclosure dimensions reflect contactors with AC coils only. DC coils are not included in the Orange Express program. See full catalog for details.

ORANGE EXPRESS

Enc. Contactors & Starters

F/WR

#### Coil Codes

A.C. Coil Code	Voltage Range	
	50 Hz	60 Hz
24Z	24V	24V
120	110V	120V
220W	~	208V-240V
480	440V	480V
600	550V	600V

#### Ordering Instructions

Specify Catalog Number	
Replace (*) with Coil Code	See page this page See pages 26 See pages 27
Replace (◆) with O/L Relay	
Factory Modifications available	

- ① Refer to page C81-85 in full catalog for dimensional information.
- ② Contactors are equipped with number and type of auxiliaries indicated. See Modification Section to order additional or different auxiliary contacts.
- ③ "A" and "B" Clam shell enclosures have been replaced with two new hinged cover designs. See pages C65.1, C81 and C83 in full catalog.

**Three Phase, Reversing CAUT7**

Maximum Horsepower Three Phase				Auxiliary Contacts per Contactor ②		Type 1 (M1) General Purpose		D I M	Type 12 (M12) Industrial Dusttight		D I M	Type 4X (F4) Watertight Corrosion Resistant Non-metallic		D I M
200V	230V	460V	575V	NO	NC ③	Catalog No.	Price	①	Catalog No.	Price	①	Catalog No.	Price	①
2	2	5	7 1/2	1	1	CAUT7-9-*◆-GO	673	A ④	CAUT7-9-*◆-DO	723	M	CAUT7-9-*◆-CO	757	U1
3	3	7 1/2	10	1	1	CAUT7-12-*◆-GO	740	A ④	CAUT7-12-*◆-DO	791	M	CAUT7-12-*◆-CO	824	U1
5	5	10	15	1	1	CAUT7-16-*◆-GO	782	A ④	CAUT7-16-*◆-DO	833	M	CAUT7-16-*◆-CO	875	U1
5	7 1/2	15	15	1	1	CAUT7-23-*◆-GO	824	A ④	CAUT7-23-*◆-DO	875	M	CAUT7-23-*◆-CO	917	U1
7 1/2	10	20	25	1	1	CAUT7-30-*◆-GO	959	A ④	CAUT7-30-*◆-DO	1010	M	CAUT7-30-*◆-CO	1043	U1
10	10	25	30	1	1	CAUT7-37-*◆-GO	1043	A ④	CAUT7-37-*◆-DO	1094	M	CAUT7-37-*◆-CO	1136	U1
10	15	30	30	1	1	CAUT7-43-*◆-GO	1220	B ④	CAUT7-43-*◆-DO	1262	M	CAUT7-43-*◆-CO	1262	U1
15	20	40	50	1	1	CAUT7-60-*◆-GO	1557	C	CAUT7-60-*◆-DO	1599	O	CAUT7-60-*◆-CO	1733	V1
20	25	50	60	1	1	CAUT7-72-*◆-GO	1671	C	CAUT7-72-*◆-DO	1717	O	CAUT7-72-*◆-CO	1851	V1
25	30	60	60	1	1	CAUT7-85-*◆-GO	1784	C	CAUT7-85-*◆-DO	1826	O	CAUT7-85-*◆-CO	1977	V1
30	30	75	75	1	1	CAUT7-97-*◆-GO	2024	C	CAUT7-97-*◆-DO	2066	O	CAUT7-97-*◆-CO	2217	V1

**NOTE:** Catalog numbers, list prices and enclosure dimensions reflect contactors with AC coils only. DC coils are not included in the Orange Express program. See full catalog for details.

ORANGE EXPRESS

Enc. Contactors & Starters

F/R

**Coil Codes**

A.C. Coil Code	Voltage Range	
	50 Hz	60 Hz
24Z	24V	24V
120	110V	120V
220W	~	208V-240V
480	440V	480V
600	550V	600V

**Ordering Instructions**

Specify Catalog Number	
Replace (*) with Coil Code	See page this page See pages 26 See pages 27
Replace (◆) with O/L Relay	
Factory Modifications available	

- ① Refer to page C81-85 in full catalog for dimensional information.
- ② Contactors are equipped with number and type of auxiliaries indicated. See Modification Section to order additional or different auxiliary contacts.
- ③ One N.C. auxiliary contact is used for electrical interlocking. On CAUT7 reversing starters, the N.C. contact comes from the Mechanical/Electrical Interlock unit (Cat # CM7-02).
- ④ "A" and "B" Clam shell enclosures have been replaced with two new hinged cover designs. See pages C65.1, C81 and C83 in full catalog.

#### Single Phase, Non-Reversing CBT7

Maximum Horsepower Single Ø		Auxiliary Contacts per Contactor ②		Type 1 (M1) General Purpose		D I M	Type 12 (M12) Industrial Dusttight		D I M	Type 4X (F4) Watertight Corrosion Resistant		D I M
115V	230V	NO	NC	Catalog No.	Price ①		Catalog No.	Price ①		Catalog No.	Price ①	
1/2	1 1/2	1	0	CBT7- 9-*-◆-G0	303	A ③	CBT7- 9-*-◆-D0	429	L	CBT7- 9-*-◆-C0	454	S1
1/2	2	1	0	CBT7- 12-*-◆-G0	336	A ③	CBT7- 12-*-◆-D0	462	L	CBT7- 12-*-◆-C0	488	S1
1	3	1	0	CBT7- 16-*-◆-G0	361	A ③	CBT7- 16-*-◆-D0	488	L	CBT7- 16-*-◆-C0	513	S1
2	3	1	0	CBT7- 23-*-◆-G0	378	A ③	CBT7- 23-*-◆-D0	505	L	CBT7- 23-*-◆-C0	530	S1
2	5	1	0	CBT7- 30-*-◆-G0	462	A ③	CBT7- 30-*-◆-D0	606	L	CBT7- 30-*-◆-C0	732	U1
3	5	1	0	CBT7- 37-*-◆-G0	505	A ③	CBT7- 37-*-◆-D0	648	L	CBT7- 37-*-◆-C0	782	U1
3	7 1/2	1	0	CBT7- 43-*-◆-G0	740	A ③	CBT7- 43-*-◆-D0	791	M	CBT7- 43-*-◆-C0	841	U1
5	10	1	0	CBT7- 60-*-◆-G0	791	B ③	CBT7- 60-*-◆-D0	967	O	CBT7- 60-*-◆-C0	951	U1
5	15	1	0	CBT7- 72-*-◆-G0	841	B ③	CBT7- 72-*-◆-D0	1026	O	CBT7- 72-*-◆-C0	1010	U1
7 1/2	15	1	0	CBT7- 85-*-◆-G0	909	B ③	CBT7- 85-*-◆-D0	1085	O	CBT7- 85-*-◆-C0	1077	U1

**NOTE:** Catalog numbers, list prices and enclosure dimensions reflect contactors with AC coils only. DC coils are not included in the Orange Express program. See full catalog for details.

ORANGE EXPRESS

Enc. Contactors & Starters

F/WR

#### Coil Codes

A.C. Coil Code	Voltage Range	
	50 Hz	60 Hz
24Z	24V	24V
120	110V	120V
220W	~	208V-240V
480	440V	480V
600	550V	600V

#### Ordering Instructions

Specify Catalog Number	
Replace (*) with Coil Code	See page this page See pages 26 See pages 27
Replace (◆) with O/L Relay	
Factory Modifications available	

- ① Refer to page C81-85 in full catalog for dimensional information.
- ② Contactors are equipped with number and type of auxiliaries indicated. See Modification Section to order additional or different auxiliary contacts.
- ③ "A" and "B" Clam shell enclosures have been replaced with two new hinged cover designs. See pages C65.1, C81 and C83 in full catalog.

**Single Phase, Reversing CBUTR7 (Reconnectable Winding – Three Lead Motor)**

Maximum Horsepower Single Ø		Auxiliary Contacts per Contactor ②		Type 1 (M1) General Purpose	D I M	Type 12 (M12) Industrial Dusttight	D I M	Type 4X (F4) Watertight Corrosion Resistant Non-metallic	D I M	
115V	230V	NO	NC ③	Catalog No.	Price ①	Catalog No.	Price ①	Catalog No.	Price ①	
1/2	1 1/2	1	1	CBUTR7-9-*◆-G0	673	A ④ CBUTR7-9-*◆-D0	723	M CBUTR7-9-*◆-C0	757	U1
1/2	2	1	1	CBUTR7-12-*◆-G0	740	A ④ CBUTR7-12-*◆-D0	791	M CBUTR7-12-*◆-C0	824	U1
1	3	1	1	CBUTR7-16-*◆-G0	782	A ④ CBUTR7-16-*◆-D0	833	M CBUTR7-16-*◆-C0	875	U1
2	3	1	1	CBUTR7-23-*◆-G0	824	A ④ CBUTR7-23-*◆-D0	875	M CBUTR7-23-*◆-C0	917	U1
2	5	1	1	CBUTR7-30-*◆-G0	959	A ④ CBUTR7-30-*◆-D0	1010	M CBUTR7-30-*◆-C0	1043	U1

**Single Phase, Reversing CBUTS7 (Series Winding – Four Lead Repulsion Induction Motor)**

Maximum Horsepower Single Ø		Auxiliary Contacts per Contactor ②		Type 1 (M1) General Purpose	D I M	Type 12 (M12) Industrial Dusttight	D I M	Type 4X (F4) Watertight Corrosion Resistant Non-metallic	D I M	
115V	230V	NO	NC ③	Catalog No.	Price ①	Catalog No.	Price ①	Catalog No.	Price ①	
1/2	1 1/2	1	1	CBUTS7-9-*◆-G0	673	A ④ CBUTS7-9-*◆-D0	723	M CBUTS7-9-*◆-C0	757	U1
1/2	2	1	1	CBUTS7-12-*◆-G0	740	A ④ CBUTS7-12-*◆-D0	791	M CBUTS7-12-*◆-C0	824	U1
1	3	1	1	CBUTS7-16-*◆-G0	782	A ④ CBUTS7-16-*◆-D0	833	M CBUTS7-16-*◆-C0	875	U1
2	3	1	1	CBUTS7-23-*◆-G0	824	A ④ CBUTS7-23-*◆-D0	875	M CBUTS7-23-*◆-C0	917	U1
2	5	1	1	CBUTS7-30-*◆-G0	959	A ④ CBUTS7-30-*◆-D0	1010	M CBUTS7-30-*◆-C0	1043	U1

**Single Phase, Reversing CBUTP7 (Parallel Winding – Four Lead Capacitor or Split Phase Motor)**

Maximum Horsepower Single Ø		Auxiliary Contacts per Contactor ②		Type 1 (M1) General Purpose	D I M	Type 12 (M12) Industrial Dusttight	D I M	Type 4X (F4) Watertight Corrosion Resistant Non-metallic	D I M	
115V	230V	NO	NC ③	Catalog No.	Price ①	Catalog No.	Price ①	Catalog No.	Price ①	
1/2	1 1/2	1	1	CBUTP7-9-*◆-G0	673	A ④ CBUTP7-9-*◆-D0	723	M CBUTP7-9-*◆-C0	757	U1
1/2	2	1	1	CBUTP7-12-*◆-G0	740	A ④ CBUTP7-12-*◆-D0	791	M CBUTP7-12-*◆-C0	824	U1
1	3	1	1	CBUTP7-16-*◆-G0	782	A ④ CBUTP7-16-*◆-D0	833	M CBUTP7-16-*◆-C0	875	U1
2	3	1	1	CBUTP7-23-*◆-G0	824	A ④ CBUTP7-23-*◆-D0	875	M CBUTP7-23-*◆-C0	917	U1
2	5	1	1	CBUTP7-30-*◆-G0	959	A ④ CBUTP7-30-*◆-D0	1010	M CBUTP7-30-*◆-C0	1043	U1

**NOTE:** Catalog numbers, list prices and enclosure dimensions reflect contactors with AC coils only. DC coils are not included in the Orange Express program. See full catalog for details.

**Coil Codes**

A.C. Coil Code	Voltage Range	
	50 Hz	60 Hz
24Z	24V	24V
120	110V	120V
220W	~	208V-240V
480	440V	480V
600	550V	600V

**Ordering Instructions**

Specify Catalog Number	
Replace (*) with Coil Code	See page this page See pages 26 See pages 27
Replace (◆) with O/L Relay	
Factory Modifications available	

- ① Refer to page C81-85 in full catalog for dimensional information.
- ② Contactors are equipped with number and type of auxiliaries indicated. See Modification Section to order additional or different auxiliary contacts.
- ③ One N.C. auxiliary contact is used for electrical interlocking. On CAUT7 reversing starters, the N.C. contact comes from the Mechanical/Electrical Interlock unit (Cat # CM7-02).
- ④ "A" and "B" Clam shell enclosures have been replaced with two new hinged cover designs. See pages C65.1, C81 and C83 in full catalog.

#### Series CAT7 with Thermal-Magnetic Circuit Breaker

Maximum Horsepower Three Phase				MCCB Amps	Type 1 (M1) General Purpose	Price	D I M	Type 12 (M12) Industrial Dusttight	Price	D I M	Type 4X (F4) Watertight Corrosion Resistant Non-metallic	Price	D I M
200V	230V	460V	575V										
2	2	5	7.5	15	CAT7-9-*◆-TB15GO	1256	C	CAT7-9-*◆-TB15DO	1466	C2	CAT7-9-*◆-TB15CO	1633	V1
~	3	~	~	15	CAT7-12-*◆-TB15GO	1298	C	CAT7-12-*◆-TB15DO	1508	C2	CAT7-12-*◆-TB15CO	1675	V1
3	~	7.5	10	20	CAT7-12-*◆-TB20GO	1298	C	CAT7-12-*◆-TB20DO	1508	C2	CAT7-12-*◆-TB20CO	1675	V1
~	5	10	~	25	CAT7-16-*◆-TB25GO	1340	C	CAT7-16-*◆-TB25DO	1549	C2	CAT7-16-*◆-TB25CO	1717	V1
5	~	~	15	30	CAT7-16-*◆-TB30GO	1340	C	CAT7-16-*◆-TB30DO	1549	C2	CAT7-16-*◆-TB30CO	1717	V1
5	~	~	15	30	CAT7-23-*◆-TB30GO	1382	C	CAT7-23-*◆-TB30DO	1591	C2	CAT7-23-*◆-TB30CO	1759	V1
~	7.5	15	~	35	CAT7-23-*◆-TB35GO	1382	C	CAT7-23-*◆-TB35DO	1591	C2	CAT7-23-*◆-TB35CO	1759	V1
7.5	~	~	~	40	CAT7-30-*◆-TB40GO	1508	C	CAT7-30-*◆-TB40DO	1759	C2	CAT7-30-*◆-TB40CO	1884	V1
~	10	20	25	50	CAT7-30-*◆-TB50GO	1508	C	CAT7-30-*◆-TB50DO	1759	C2	CAT7-30-*◆-TB50CO	1884	V1
10	10	~	30	50	CAT7-37-*◆-TB50GO	1549	C	CAT7-37-*◆-TB50DO	1801	C2	CAT7-37-*◆-TB50CO	1926	V1
~	~	25	~	60	CAT7-37-*◆-TB60GO	1549	C	CAT7-37-*◆-TB60DO	1801	C2	CAT7-37-*◆-TB60CO	1926	V1
10	~	~	30	50	CAT7-43-*◆-TB50GO	1591	C	CAT7-43-*◆-TB50DO	2010	C2	CAT7-43-*◆-TB50CO	2178	V1
~	~	30	~	60	CAT7-43-*◆-TB60GO	1591	C	CAT7-43-*◆-TB60DO	2010	C2	CAT7-43-*◆-TB60CO	2178	V1
~	15	~	~	70	CAT7-43-*◆-TB70GO	1591	C	CAT7-43-*◆-TB70DO	2010	C2	CAT7-43-*◆-TB70CO	2178	V1
15	~	40	50	80	CAT7-60-*◆-TB80GO	1717	D3	CAT7-60-*◆-TB80DO	2136	Q	CAT7-60-*◆-TB80CO	2303	W2
~	20	~	~	90	CAT7-60-*◆-TB90GO	1717	D3	CAT7-60-*◆-TB90DO	2136	Q	CAT7-60-*◆-TB90CO	2303	W2
20	~	50	60	100	CAT7-72-*◆-TB100GO	1759	D3	CAT7-72-*◆-TB100DO	2680	Q	CAT7-72-*◆-TB100CO	2345	W2
~	25	~	~	125	CAT7-72-*◆-TB125GO	2261	D3	CAT7-72-*◆-TB125DO	2722	Q	CAT7-72-*◆-TB125CO	2848	W2
~	~	~	60	100	CAT7-85-*◆-TB100GO	1801	D3	CAT7-85-*◆-TB100DO	3190	Q	CAT7-85-*◆-TB100CO	2387	W2
25	30	60	~	125	CAT7-85-*◆-TB125GO	2303	D3	CAT7-85-*◆-TB125DO	3692	Q	CAT7-85-*◆-TB125CO	2889	W2
~	30	~	75	125	CAT7-97-*◆-TB125GO	2423	D3	CAT7-97-*◆-TB125DO	3812	Q	CAT7-97-*◆-TB125CO	3009	W2
30	~	75	~	150	CAT7-97-*◆-TB150GO	2623	D3	CAT7-97-*◆-TB150DO	4012	Q	CAT7-97-*◆-TB150CO	3209	W2

ORANGE EXPRESS

Enc. Contactors & Starters

COMB

**NOTE:** Catalog numbers, list prices and enclosure dimensions reflect contactors with AC coils only. DC coils are not included in the Orange Express program. See full catalog for details.

#### Coil Codes

A.C. Coil Code	Voltage Range	
	50 Hz	60 Hz
24Z	24V	24V
120	110V	120V
220W	~	208V-240V
480	440V	480V
600	550V	600V



#### Ordering Instructions

Specify Catalog Number	
Replace (*) with Coil Code	See page this page See pages 26 See pages 27
Replace (◆) with O/L Relay	
Factory Modifications available	

➊ Refer to page C81-85 in full catalog for dimensional information.

#### Series CAT7 with Fusible Disconnect (J-Type) ②③

Maximum Horsepower Three Phase				Fuse Clip Amps	Type 1 (M1) General Purpose	Price	D I M	Type 12 (M12) Industrial Dusttight	Price	D I M	Type 4X (F4) Watertight Corrosion Resistant Non-metallic	Price	D I M
200V	230V	460V	575V										
2	2	5	7.5	30	CAT7-9-*◆-JF61GO	1047	C	CAT7-9-*◆-JF61DO	1382	C2	CAT7-9-*◆-JF61CO	1214	V1
3	3	7.5	10	30	CAT7-12-*◆-JF61GO	1089	C	CAT7-12-*◆-JF61DO	1424	C2	CAT7-12-*◆-JF61CO	1256	V1
5	5	10	15	30	CAT7-16-*◆-JF61GO	1131	C	CAT7-16-*◆-JF61DO	1466	C2	CAT7-16-*◆-JF61CO	1298	V1
5	~	~	~	30	CAT7-23-*◆-JF61GO	1173	C	CAT7-23-*◆-JF61DO	1508	C2	CAT7-23-*◆-JF61CO	1340	V1
~	7.5	15	15	60	CAT7-23-*◆-JF62GO	1256	C	CAT7-23-*◆-JF62DO	1591	C2	CAT7-23-*◆-JF62CO	1424	V1
7.5	10	20	25	60	CAT7-30-*◆-JF62GO	1382	C	CAT7-30-*◆-JF62DO	1717	C2	CAT7-30-*◆-JF62CO	1549	V1
10	10	25	30	60	CAT7-37-*◆-JF62GO	1424	C	CAT7-37-*◆-JF62DO	1759	C2	CAT7-37-*◆-JF62CO	1591	V1
10	~	30	30	60	CAT7-43-*◆-JF62GO	1466	C	CAT7-43-*◆-JF62DO	1801	C2	CAT7-43-*◆-JF62CO	1633	V1
~	15	~	~	100	CAT7-43-*◆-JF63GO	1884	D3	CAT7-43-*◆-JF63DO	2471	Q	CAT7-43-*◆-JF63CO	2303	W1
15	20	40	50	100	CAT7-60-*◆-JF63GO	2010	D3	CAT7-60-*◆-JF63DO	2596	Q	CAT7-60-*◆-JF63CO	2429	W2
20	25	50	60	100	CAT7-72-*◆-JF63GO	2052	D3	CAT7-72-*◆-JF63DO	2638	Q	CAT7-72-*◆-JF63CO	2471	W2
~	~	~	60	100	CAT7-85-*◆-JF63GO	2094	D3	CAT7-85-*◆-JF63DO	2680	Q	CAT7-85-*◆-JF63CO	2513	W2
25	30	60	~	200	CAT7-85-*◆-JF64GO	2848	G	CAT7-85-*◆-JF64DO	3434	T	CAT7-85-*◆-JF64CO	4858	X1
30	30	75	75	200	CAT7-97-*◆-JF64GO	2968	G	CAT7-97-*◆-JF64DO	3554	T	CAT7-97-*◆-JF64CO	4978	X1

**NOTE:** Catalog numbers, list prices and enclosure dimensions reflect contactors with AC coils only. DC coils are not included in the Orange Express program. See full catalog for details.

ORANGE EXPRESS

Enc. Contactors & Starters

COMB



#### Coil Codes

A.C. Coil Code	Voltage Range	
	50 Hz	60 Hz
24Z	24V	24V
120	110V	120V
220W	~	208V-240V
480	440V	480V
600	550V	600V

#### Ordering Instructions

Specify Catalog Number	
Replace (*) with Coil Code	See page this page See pages 26 See pages 27
Replace (◆) with O/L Relay	
Factory Modifications available	

- ① Refer to page C81-85 in full catalog for dimensional information.
- ② Fusible combo starter uses the L10 Disconnect. Fuse clips accept "J" type fuses. Power fuses not supplied.
- ③ A Red and Yellow Handle may be selected instead of the standard Gray and Black handle. Change "JF" to "LF" in catalog number.

#### Series CAT7 with Non-Fusible Disconnect ②③

Maximum Horsepower Three Phase				Disc Size/ Amps	Type 1 (M1) General Purpose		D I M	Type 12 (M12) Industrial Dusttight		D I M	Type 4X (F4) Watertight Corrosion Resistant Non-metallic		D I M
200V	230V	460V	575V		Catalog No.	Price ①		Catalog No.	Price ①		Catalog No.	Price ①	
2	2	5	7.5	30	CAT7-9-*-◆-JU61GO	1005	C	CAT7-9-*-◆-JU61DO	1340	C2	CAT7-9-*-◆-JU61CO	1173	V1
3	3	7.5	10	30	CAT7-12-*-◆-JU61GO	1047	C	CAT7-12-*-◆-JU61DO	1381	C2	CAT7-12-*-◆-JU61CO	1214	V1
5	5	10	15	30	CAT7-16-*-◆-JU61GO	1089	C	CAT7-16-*-◆-JU61DO	1424	C2	CAT7-16-*-◆-JU61CO	1256	V1
5	7.5	15	15	30	CAT7-23-*-◆-JU61GO	1131	C	CAT7-23-*-◆-JU61DO	1466	C2	CAT7-23-*-◆-JU61CO	1298	V1
7.5	~	~	20	30	CAT7-30-*-◆-JU61GO	1214	C	CAT7-30-*-◆-JU61DO	1549	C2	CAT7-30-*-◆-JU61CO	1382	V1
~	10	20	25	60	CAT7-30-*-◆-JU62GO	1340	C	CAT7-30-*-◆-JU62DO	1675	C2	CAT7-30-*-◆-JU62CO	1508	V1
10	10	25	30	60	CAT7-37-*-◆-JU62GO	1382	C	CAT7-37-*-◆-JU62DO	1717	C2	CAT7-37-*-◆-JU62CO	1549	V1
10	15	30	30	60	CAT7-43-*-◆-JU62GO	1424	C	CAT7-43-*-◆-JU62DO	1759	C2	CAT7-43-*-◆-JU62CO	1591	V1
15	~	~	50	60	CAT7-60-*-◆-JU62GO	1843	D3	CAT7-60-*-◆-JU62DO	2429	Q	CAT7-60-*-◆-JU62CO	2219	W2
~	20	40	~	100	CAT7-60-*-◆-JU63GO	1968	D3	CAT7-60-*-◆-JU63DO	2680	Q	CAT7-60-*-◆-JU63CO	2345	W2
20	25	50	60	100	CAT7-72-*-◆-JU63GO	2010	D3	CAT7-72-*-◆-JU63DO	2722	Q	CAT7-72-*-◆-JU63CO	2387	W2
25	30	60	60	100	CAT7-85-*-◆-JU63GO	2052	D3	CAT7-85-*-◆-JU63DO	2764	Q	CAT7-85-*-◆-JU63CO	2429	W2
30	30	75	75	100	CAT7-97-*-◆-JU63GO	2172	D3	CAT7-97-*-◆-JU63DO	2884	Q	CAT7-97-*-◆-JU63CO	2549	W2

**NOTE:** Catalog numbers, list prices and enclosure dimensions reflect contactors with AC coils only. DC coils are not included in the Orange Express program. See full catalog for details.

#### Coil Codes

A.C. Coil Code	Voltage Range	
	50 Hz	60 Hz
24Z	24V	24V
120	110V	120V
220W	~	208V-240V
480	440V	480V
600	550V	600V

#### Ordering Instructions

Specify Catalog Number	
Replace (*) with Coil Code	See page this page See pages 26 See pages 27
Replace (◆) with O/L Relay	
Factory Modifications available	

- ① Refer to page C81-85 in full catalog for dimensional information.
- ② Non-fusible combo-starter uses the L10 non-fusible disconnect.
- ③ A Red and Yellow Handle may be selected instead of the standard Gray and Black handle. Change "JU" to "LU" in catalog number.

### Three Phase, Non-Reversing CATN7

NEMA Size	Maximum Horsepower Three Phase				Auxiliary Contacts per Contactor ②		Type 1 (M1) General Purpose	D I M	Type 12 (M12) Industrial Dusttight	D I M	Type 4X (F4) Watertight Corrosion Resistant Non-metallic	D I M			
	200V	230V	460V	575V	NO	NC	Catalog Number		Price ①		Catalog Number		Price ①	Catalog Number	Price ①
00	1-1/2	1-1/2	2	2	1	0	CATN7-12-*◆-G0	336	A ③	CATN7-12-*◆-D0	462	L	CATN7-12-*◆-C0	488	S1
0	3	3	5	5	1	0	CATN7-16-*◆-G0	361	A ③	CATN7-16-*◆-D0	488	L	CATN7-16-*◆-C0	513	S1
1	7-1/2	7-1/2	10	10	1	0	CATN7-37-*◆-G0	505	A ③	CATN7-37-*◆-D0	648	L	CATN7-37-*◆-C0	782	U1
2	10	15	25	25	1	0	CATN7-43-*◆-G0	595	A ③	CATN7-43-*◆-D0	789	L	CATN7-43-*◆-C0	841	U1
3	25	30	50	50	1	0	CATN7-85-*◆-G0	909	B ③	CATN7-85-*◆-D0	1085	M	CATN7-85-*◆-C0	1077	U1

### Single Phase, Non-Reversing CBTN7

NEMA Size	Maximum HP Single ④		Auxiliary Contacts per Contactor ②		Type 1 (M1) General Purpose	D I M	Type 12 (M12) Industrial Dusttight	D I M	Type 4X (F4) Watertight Corrosion Resistant Non-metallic	D I M			
	115V	230V	NO	NC	Catalog Number		Price ①		Catalog Number		Price ①	Catalog Number	Price ①
00	1/3	1	1	0	CBTN7-12-*◆-G0	336	A ③	CBTN7-12-*◆-D0	462	L	CBTN7-12-*◆-C0	488	S1
0	1	2	1	0	CBTN7-16-*◆-G0	361	A ③	CBTN7-16-*◆-D0	488	L	CBTN7-16-*◆-C0	513	S1
1	2	3	1	0	CBTN7-37-*◆-G0	505	A ③	CBTN7-37-*◆-D0	648	L	CBTN7-37-*◆-C0	782	U1
2	3	7-1/2	1	0	CBTN7-43-*◆-G0	595	A ③	CBTN7-43-*◆-D0	789	L	CBTN7-43-*◆-C0	841	U1
3	7-1/2	15	1	0	CBTN7-85-*◆-G0	909	B ③	CBTN7-85-*◆-D0	1085	M	CBTN7-85-*◆-C0	1077	U1

**NOTE:** Catalog numbers, list prices and enclosure dimensions reflect contactors with AC coils only. DC coils are not included in the Orange Express program. See full catalog for details.

### Coil Codes

A.C. Coil Code	Voltage Range	
	50 Hz	60 Hz
24Z	24V	24V
120	110V	120V
220W	~	208V-240V
480	440V	480V
600	550V	600V

### Ordering Instructions

Specify Catalog Number	<b>See page this page</b> <b>See pages 26</b> <b>See pages 27</b>
Replace (*) with Coil Code	
Replace (◆) with O/L Relay	
Factory Modifications available	

- ① Refer to page C81-85 in full catalog for dimensional information.
- ② Contactors are equipped with number and type of auxiliaries indicated. See Modification Section to order additional or different auxiliary contacts.
- ③ "A" and "B" Clam shell enclosures have been replaced with two new hinged cover designs. See pages C65.1, C81 and C83 in full catalog.

### Series CATN7 with Thermal-Magnetic Circuit Breaker

NEMA Size	Maximum Horsepower Three Phase				MCCB Amps	Type 1 (M1) General Purpose	D I M	Type 12 (M12) Industrial Dusttight	D I M	Type 4X (F4) Watertight CORrosion Resistant Non-metallic	D I M			
	200V	230V	460V	575V		Catalog No.		Price		Catalog No.		Price	Catalog No.	Price
00	1-1/2	1-1/2	2	2	15	CATN7-12-*◆-TB15G0	1298	C	CATN7-12-*◆-TB15D0	1508	C2	CATN7-12-*◆-TB15C0	1675	V1
	2	3	5	5	15	CATN7-16-*◆-TB15G0	1340	C	CATN7-16-*◆-TB15D0	1549	C2	CATN7-16-*◆-TB15C0	1717	V1
	3	~	~	~	20	CATN7-16-*◆-TB20G0	1340	C	CATN7-16-*◆-TB20D0	1549	C2	CATN7-16-*◆-TB20C0	1717	V1
1	~	~	~	7-1/2	15	CATN7-37-*◆-TB15G0	1549	C	CATN7-37-*◆-TB15D0	1801	C2	CATN7-37-*◆-TB15C0	1926	V1
	~	~	7-1/2	10	20	CATN7-37-*◆-TB20G0	1549	C	CATN7-37-*◆-TB20D0	1801	C2	CATN7-37-*◆-TB20C0	1926	V1
	~	5	10	~	25	CATN7-37-*◆-TB25G0	1549	C	CATN7-37-*◆-TB25D0	1801	C2	CATN7-37-*◆-TB25C0	1926	V1
	5	~	~	~	30	CATN7-37-*◆-TB30G0	1549	C	CATN7-37-*◆-TB30D0	1801	C2	CATN7-37-*◆-TB30C0	1926	V1
	~	7-1/2	~	~	35	CATN7-37-*◆-TB35G0	1549	C	CATN7-37-*◆-TB35D0	1801	C2	CATN7-37-*◆-TB35C0	1926	V1
	7-1/2	~	~	~	40	CATN7-37-*◆-TB40G0	1549	C	CATN7-37-*◆-TB40D0	1801	C2	CATN7-37-*◆-TB40C0	1926	V1
2	~	~	~	15	30	CATN7-43-*◆-TB30G0	1591	C	CATN7-43-*◆-TB30D0	2010	C2	CATN7-43-*◆-TB30C0	2178	V1
	~	~	15	20	35	CATN7-43-*◆-TB35G0	1591	C	CATN7-43-*◆-TB35D0	2010	C2	CATN7-43-*◆-TB35C0	2178	V1
	10	10	20	25	50	CATN7-43-*◆-TB50G0	1591	C	CATN7-43-*◆-TB50D0	2010	C2	CATN7-43-*◆-TB50C0	2178	V1
	~	~	25	~	60	CATN7-43-*◆-TB60G0	1591	C	CATN7-43-*◆-TB60D0	2010	C2	CATN7-43-*◆-TB60C0	2178	V1
	~	15	~	~	70	CATN7-43-*◆-TB70G0	1591	C	CATN7-43-*◆-TB70D0	2010	C2	CATN7-43-*◆-TB70C0	2178	V1
3	~	~	~	30	50	CATN7-85-*◆-TB50G0	1801	D3	CATN7-85-*◆-TB50D0	3190	Q	CATN7-85-*◆-TB50C0	2387	W2
	~	~	30	~	60	CATN7-85-*◆-TB60G0	1801	D3	CATN7-85-*◆-TB60D0	3190	Q	CATN7-85-*◆-TB60C0	2387	W2
	~	~	~	40	70	CATN7-85-*◆-TB70G0	1801	D3	CATN7-85-*◆-TB70D0	3190	Q	CATN7-85-*◆-TB70C0	2387	W2
	15	~	40	50	80	CATN7-85-*◆-TB80G0	1801	D3	CATN7-85-*◆-TB80D0	3190	Q	CATN7-85-*◆-TB80C0	2387	W2
	~	20	~	~	90	CATN7-85-*◆-TB90G0	1801	D3	CATN7-85-*◆-TB90D0	3190	Q	CATN7-85-*◆-TB90C0	2387	W2
	20	~	50	~	100	CATN7-85-*◆-TB100G0	1801	D3	CATN7-85-*◆-TB100D0	3190	Q	CATN7-85-*◆-TB100C0	2387	W2
	25	30	~	~	125	CATN7-85-*◆-TB125G0	2303	D3	CATN7-85-*◆-TB125D0	3692	Q	CATN7-85-*◆-TB125C0	2889	W2

**NOTE:** Catalog numbers, list prices and enclosure dimensions reflect contactors with AC coils only. DC coils are not included in the Orange Express program. See full catalog for details.

### Coil Codes

A.C. Coil Code	Voltage Range	
	50 Hz	60 Hz
24Z	24V	24V
120	110V	120V
220W	~	208V-240V
480	440V	480V
600	550V	600V

### Ordering Instructions

Specify Catalog Number	
Replace (*) with Coil Code	See page this page See pages 26 See pages 27
Replace (◆) with O/L Relay	
Factory Modifications available	

● Refer to page C81-85 in full catalog for dimensional information.

### Series CATN7 with Fusible Disconnect (J-Type) ②④

NEMA Size	Maximum Horsepower Three Phase				Fuse Clip Amps	Type 1 (M1) General Purpose	Price	D I M	Type 12 (M12) [Type 3R (M3) ②] Industrial Dusttight	Price	D I M	Type 4X (F4) Watertight Corrosion Resistant Non-metallic	Price	D I M
	200V	230V	460V	575V										
00	1-1/2	1-1/2	2	2	30	CATN7-12-*-*♦-JF61GO	1089	C	CATN7-12-*-*♦-JF61DO	1424	C2	CATN7-12-*-*♦-JF61CO	1256	V1
0	3	3	5	5	30	CATN7-16-*-*♦-JF61GO	1131	C	CATN7-16-*-*♦-JF61DO	1466	C2	CATN7-16-*-*♦-JF61CO	1298	V1
1	5	5	10	10	30	CATN7-37-*-*♦-JF61GO	1341	C	CATN7-37-*-*♦-JF61DO	1676	C2	CATN7-37-*-*♦-JF61CO	1508	V1
	7-1/2	7-1/2	~	~	60	CATN7-37-*-*♦-JF62GO	1424	C	CATN7-37-*-*♦-JF62DO	1759	C2	CATN7-37-*-*♦-JF62CO	1591	V1
2	~	~	~	15	30	CATN7-43-*-*♦-JF61GO	1383	C	CATN7-43-*-*♦-JF61DO	1718	C2	CATN7-43-*-*♦-JF61CO	1550	V1
	10	10	25	25	60	CATN7-43-*-*♦-JF62GO	1466	C	CATN7-43-*-*♦-JF62DO	1801	C2	CATN7-43-*-*♦-JF62CO	1633	V1
	~	15	~	~	100	CATN7-43-*-*♦-JF63GO	1884	D3	CATN7-43-*-*♦-JF63DO	2434	Q	CATN7-43-*-*♦-JF63CO	2303	W1
3	~	~	30	40	60	CATN7-85-*-*♦-JF62GO	2052	D3	CATN7-85-*-*♦-JF62DO	2638	Q	CATN7-85-*-*♦-JF62CO	2471	W2
	20	25	50	50	100	CATN7-85-*-*♦-JF63GO	2094	D3	CATN7-85-*-*♦-JF63DO	2680	Q	CATN7-85-*-*♦-JF63CO	2513	W2
	25	30	~	~	200	CATN7-85-*-*♦-JF64GO	2848	G	CATN7-85-*-*♦-JF64DO	3434	T	CATN7-85-*-*♦-JF64CO	4858	X1

### Series CATN7 with Non-Fusible Disconnect ③④

NEMA Size	Maximum Horsepower Three Phase				Disc Size/Amps	Type 1 (M1) General Purpose	Price	D I M	Type 12 (M12) [Type 3R (M3) ②] Industrial Dusttight	Price	D I M	Type 4X (F4) Watertight Corrosion Resistant Non-metallic	Price	D I M
	200V	230V	460V	575V										
00	1-1/2	1-1/2	2	2	30	CATN7-12-*-*♦-JU61GO	1047	C	CATN7-12-*-*♦-JU61DO	1381	C2	CATN7-12-*-*♦-JU61CO	1214	V1
0	3	3	5	5	30	CATN7-16-*-*♦-JU61GO	1089	C	CATN7-16-*-*♦-JU61DO	1424	C2	CATN7-16-*-*♦-JU61CO	1256	V1
1	5	7-1/2	10	10	30	CATN7-37-*-*♦-JU61GO	1256	C	CATN7-37-*-*♦-JU61DO	1591	C2	CATN7-37-*-*♦-JU61CO	1423	V1
	7-1/2	~	~	~	60	CATN7-37-*-*♦-JU62GO	1382	C	CATN7-37-*-*♦-JU62DO	1717	C2	CATN7-37-*-*♦-JU62CO	1549	V1
2	~	~	15	15	30	CATN7-43-*-*♦-JU61GO	1298	C	CATN7-43-*-*♦-JU61DO	1633	C2	CATN7-43-*-*♦-JU61CO	1465	V1
	10	15	25	25	60	CATN7-43-*-*♦-JU62GO	1424	C	CATN7-43-*-*♦-JU62DO	1759	C2	CATN7-43-*-*♦-JU62CO	1591	V1
3	15	~	30	40	60	CATN7-85-*-*♦-JU62GO	1927	D3	CATN7-85-*-*♦-JU62DO	2639	Q	CATN7-85-*-*♦-JU62CO	2304	W2
	25	30	50	50	100	CATN7-85-*-*♦-JU63GO	2052	D3	CATN7-85-*-*♦-JU63DO	2764	Q	CATN7-85-*-*♦-JU63CO	2429	W2

**NOTE:** Catalog numbers, list prices and enclosure dimensions reflect contactors with AC coils only. DC coils are not included in the Orange Express program. See full catalog for details.

### Coil Codes

A.C. Coil Code	Voltage Range	
	50 Hz	60 Hz
24Z	24V	24V
120	110V	120V
220W	~	208V-240V
480	440V	480V
600	550V	600V

### Ordering Instructions

Specify Catalog Number	
Replace (*) with Coil Code	See page this page See pages 26 See pages 27
Replace (♦) with O/L Relay	
Factory Modifications available	

- ① Refer to page C81-85 in full catalog for dimensional information.
- ② Fusible combo starter uses the L10 Disconnect. Fuse clips accept "J" type fuses. Power fuses not supplied.
- ③ Non-fusible combo-starter uses the L10 non-fusible disconnect.
- ④ A Red and Yellow Handle may be selected instead of the standard Gray and Black handle. Change "JF" to "LF" in catalog number.

### CA7 Starters with CEP7 Solid State Overload Relay

①③④

For use with contactor...②	Amp Range	Overload Relay Code (◆)	Catalog Number (of Overload Relay used)	Price Adder
<b>3-Phase / Manual Reset / Class 10</b>				
CA7-9...CA7-23	0.1...0.5	D1AB	CEP7-ED1AB	Standard
	0.2...1.0	D1BB	CEP7-ED1BB	Standard
	1.0...5.0	D1CB	CEP7-ED1CB	Standard
	3.2...16	D1DB	CEP7-ED1DB	Standard
	5.4...27	D1EB	CEP7-ED1EB	Standard
CA7-30...CA7-43	1.0...5.0	D1CD	CEP7-ED1CD	Standard
	3.6...16	D1DD	CEP7-ED1DD	Standard
	5.4...27	D1ED	CEP7-ED1ED	Standard
	9...45	D1FD	CEP7-ED1FD	Standard
<b>3-Phase / Auto or Manual / Adjustable Trip Class 10, 15, 20 &amp; 30</b>				
CA7-9...CA7-23	0.1...0.5	EAB	CEP7-EEAB	+17
	0.2...1.0	EBB	CEP7-EEBB	+17
	1.0...5.0	ECB	CEP7-EECB	+17
	3.2...16	EDB	CEP7-EEDB	+17
	5.4...27	EEB	CEP7-EEEB	+17
CA7-30...CA7-43	1.0...5.0	ECD	CEP7-EECD	+21
	3.2...16	EDD	CEP7-EEDD	+21
	5.4...27	EED	CEP7-EEED	+21
	9...45	EFD	CEP7-EEFD	+21
CA7-60...CA7-97	5.4...27	EEE	CEP7-EEEE	Standard
	9...45	EFE	CEP7-EEFE	Standard
	18...90	EGE	CEP7-EEGE	Standard
	60...120	EVE	CEP7-EEVE	Standard
<b>1-Phase / Automatic or Manual Reset / Class 10</b>				
CA7-9...CA7-23	1.0...5.0	EPB	CEP7S-EEPB	Standard
	3.2...16	ERB	CEP7S-EERB	Standard
	5.2...27	ESB	CEP7S-EESB	Standard
CA7-30...CA7-43	9...45	ETD	CEP7S-EETD	Standard
CA7-60...CA7-85	18...90	EUE	CEP7S-EEUE	Standard

### Special Notes:

**Wye-Delta Starters** - First multiply motor full load current by 58%. Then, using this figure, select appropriate Overload Relay Code from tables above.

**Part Winding Starters** - First multiply motor full load current by 50%. Then, using this figure, select appropriate Overload Relay Code from tables above.

**Variable Frequency Drives** - CEP7 solid state overload relays cannot be utilized on VFDs or Softstarters with Braking option.

### CA7 Starters with CT7N Bimetallic Overload Relay

Directly ② Mounts to Contactor...	Amp Range	Overload Relay Code (◆)	Catalog Number (of Overload Relay used)	Price Adder
CA7-9... CA7-23 Frame "A"	0.10...0.16	AA16	CT7N-23-A16	+4
	0.16...0.25	AA25	CT7N-23-A25	+4
	0.25...0.40	AA40	CT7N-23-A40	+4
	0.35...0.50	AA50	CT7N-23-A50	+4
	0.45...0.63	AA63	CT7N-23-A63	+4
	0.55...0.80	AA80	CT7N-23-A80	+4
	0.75...1.0	AB10	CT7N-23-B10	+4
	0.90...1.3	AB13	CT7N-23-B13	+4
	1.1...1.6	AB16	CT7N-23-B16	+4
	1.4...2.0	AB20	CT7N-23-B20	+4
	1.8...2.5	AB25	CT7N-23-B25	+4
	2.3...3.2	AB32	CT7N-23-B32	+4
	2.9...4.0	AB40	CT7N-23-B40	+4
	3.5...4.8	AB48	CT7N-23-B48	+4
	4.5...6.3	AB63	CT7N-23-B63	+4
	5.5...7.5	AB75	CT7N-23-B75	+4
	7.2...10	AC10	CT7N-23-C10	+4
	9.0...12.5	AC12	CT7N-23-C12	+4
	11.3...16	AC16	CT7N-23-C16	+4
	15...20	AC20	CT7N-23-C20	+4
	17.5...21.5	AC21	CT7N-23-C21	+4
21...25	AC25	CT7N-23-C25	+4	
CA7-30... CA7-37 Frame "B"	15...20	BC20	CT7N-37-C20	+8
	17.5...21.5	BC21	CT7N-37-C21	+8
	21...25	BC25	CT7N-37-C25	+8
	24.5...30	BC30	CT7N-37-C30	+8
	29...36	BC36	CT7N-37-C36	+8
CA7-43 Frame "C"	33...38	BC38	CT7N-37-C38	+8
	17...25	CC25	CT7N-43-C25	+8
	24.5...36	CC36	CT7N-43-C36	+8
CA7-60... CA7-85 Frame "D"	35...47	CC47	CT7N-43-C47	+8
	35...47	DC47	CT7N-85-C47	+16
	45...60	DC60	CT7N-85-C60	+16
	58...75	DC75	CT7N-85-C75	+16
	72...90	DC90	CT7N-85-C90	+16

- ① 3-phase CEP7 units are only designed for 3∅ applications. Single phase CEP7S units are only designed for 1∅ applications.
- ② This reference is not intended to be a guide for selecting contactors. Size overload relays using the full load current of the motor.
- ③ The reset time of a CEP7 set in the automatic mode is approximately 180 seconds.
- ④ CEP7 Overload relays do not work with Variable Frequency Drives or any Sprecher + Schuh Softstarter with braking options.

Modifications or Special Feature	Change Last Digit in Catalog Number To:	Add Suffix To Catalog Number	Enclosure Type	Controller Series and Price Addition		
				CA7-9 to 43	CA7-60 to 97	
<b>Pilot Devices In Cover or Flange</b>						
"Start-Stop" Pushbutton	3		M1	84	84	
"On-Off" Pushbutton	4		M4, F4, M12	193	193	
"Hand-Off-Auto" Selector Switch	7		M1	84	84	
			M4, F4, M12	193	193	
Pilot Light Only ❶	1		All	134	134	
Pilot Lights Only (2) ❶	2		All	260	260	
Pilot light w/ "Start-Stop" Pushbutton ❶	13		M1	218	218	
Pilot Light w/ "On-Off" Pushbutton ❶	14		M4, F4, M12	327	327	
Reversing	"For-Stop-Rev" - Pushbutton	3	M1	218	218	
			M4, F4, M12	352	352	
	"For-Off-Rev" Selector Switch	6		All	193	193
	Pilot Lights (2) w/ "For-Stop-Rev" Pushbutton ❶	23		M1	477	477
				M4, F4, M12	611	611
Pilot Lights (2) w/ "For-Off-Rev" Pushbutton ❶	26		All	452	452	
<b>Control Circuit</b>						
Control Circuit Transformer (with fused primary & secondary)	Primary Volts	Secondary Volts	Replace (*) in catalog # with following codes: ❷❹			
Standard Capacity ❸	240	120	XB	M1, M4, M12 Open	320	
	480	120	XC			
	380	110	XG			
	480	24	XF			
	600	24	XJ			
<b>Control Circuit (Other)</b>						
Fused Control Circuit - 1 Fuse		F1	All, Open	108	108	
Fused Control Circuit - 2 Fuses		F2	All, Open	108	108	
Fused Primary for separate or common control						
Surge Suppressor - RC Link		RC	All, Open	42	42	
Surge Suppressor - Varistor		RV	All, Open	42	42	
<b>Additional Auxiliary Contacts</b>						
1 N.O.		L10		45	45	
1 N.C.		L01				

ORANGE EXPRESS

Enc. Contactors & Starters

TECH

### Ordering Instructions

- Change base **Catalog Number** according to instructions at top of column 2 or 3. Example: To Add a "Start-Stop" Pushbutton, Control Circuit Transformer (480/120) and RC Link: change **CA7-30-\*♦-GO** to **CA7-30-XC-♦-G3-RC**.

**Note:** Separate multiple modification suffixes with a hyphen (-).

- ❶ Pilot Lights may be applied with 24VAC/VDC, 120VAC or 240VAC Control Circuit. Pilot Lights with 380 VAC...575VAC require a control circuit transformer.
- ❷ Coil will be factory selected based on transformer secondary.
- ❸ See page C67 for detail specifications for Control Circuit Transformer.
- ❹ Refer to factory for pricing on larger oversized control circuit transformer selections.

**Enclosure Dimensions**

- Dimensions are in decimal inches
- Dimensions not intended for manufacturing purposes
- For other dimensions, please refer to factory

TYPE 1 (M) ENCLOSURE

Encl. ID Dim.	Figure No.	Enclosure Size			Mtg Depth		Mtg Centers		Panel Size Sub-Pan		H
		A	B	C	D	E	F				
A (hinge)	2	10	8	6	5.5	7	7	8.25	6.25	N/A	
B (hinge)	2	12	10	6	5.5	9	9	10.25	8.25	N/A	
C	2	16	12	6.62	6	7	13.88	13	10.5	N/A	
D	2	20	16	6.62	6	11	17.88	17	14.5	N/A	
D3	2	20	16	8.62	8	11	17.88	17	14.5	N/A	
E	2	24	20	8.62	8	15	21.88	21	18.5	N/A	
E2	2	24	20	10.62	10	15	21.88	21	18.5	N/A	
F	2	30	24	8.62	8	16.75	27.5	26	22.5	N/A	
G	2	30	24	12.62	12	16.75	27.5	26	22.5	N/A	
H	2	36	30	12.62	12	22.75	33.5	32	28.5	N/A	

TYPE 12 (M12) ENCLOSURE

Encl. ID Dim.	Figure No.	Enclosure Size			Mtg Depth		Mtg Centers		Panel Size Sub-Pan		H
		A	B	C	D	E	F				
C2	4	16	14	8	8	12	16.75	14.75	12.88	17.5	
L	4	8	6	6	5.53	4	8.75	6.75	4.88	9.5	
M	4	10	8	6	5.53	6	10.75	8.75	6.88	11.5	
O	4	14	12	6	5.53	10	14.75	12.75	10.88	15.50	
Q	5	20	16	8	8	10	21.25	17	13	22.5	
Q2	5	20	16	10	10	10	21.25	17	13	22.5	
T	5	30	24	10	10	18	31.25	27	21	32.5	

TYPE 4X (F4) NON-METALLIC ENCLOSURE

Encl. ID Dim.	Figure No.	Enclosure Size			Mtg Depth		Mtg Centers		Panel Size Sub-Pan		H
		A	B	C	D	E	F				
S1	13	7.31	5.94	5.11	4.52	5.16	6.54	4.13	5.5	N/A	
U1	13	11.87	7.31	6.88	5.85	6.54	11.10	5.47	8.98	N/A	
V1	13	14.62	11.87	6.88	5.85	11.10	13.86	10	11.73	N/A	
W2	13	23.7	14.62	9.25	8.23	13.78	22.91	12.76	20.78	N/A	

ORANGE EXPRESS

Enc. Contactors & Starters

TECH

**Enclosure Dimensions**

See dimension tables on previous page.

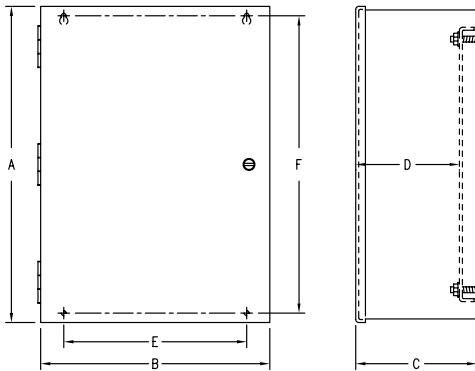


FIGURE NO. 2

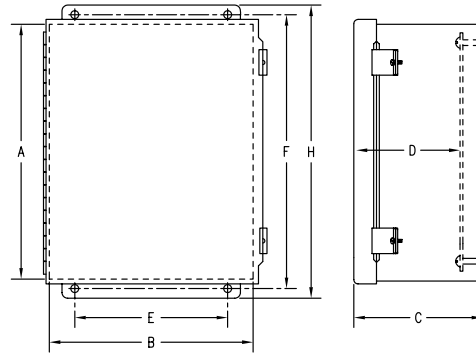


FIGURE NO. 4

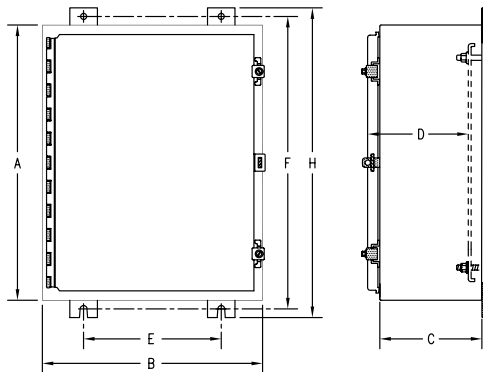


FIGURE NO. 5

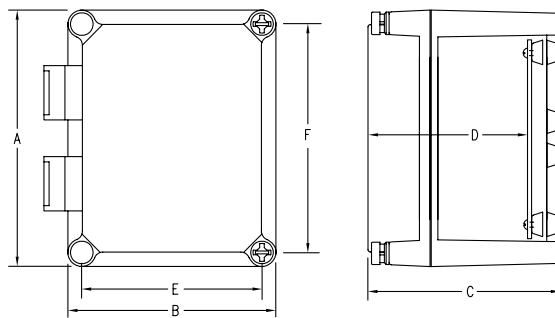


FIGURE NO. 13

#### Enclosed KTA7 - IP65

Amp / Horsepower Rating						Non-metallic (IP65) Enclosure		Catalog Number ④	Price	Dimension Code
Max. Horsepower ①②③						O/L Relay Ampere Range	Magnetic Response Current			
Single Phase		Three Phase								
115V	230V	200V	230V	460V	575V					
<b>KTA7-25S/32S Standard Interrupting Capacity</b>										
~	~	~	~	~	~	0.10...0.16	2.1	KTA7-25S-0.16A-CG	399	AY
~	~	~	~	~	~	0.16...0.25	3.3	KTA7-25S-0.25A-CG	399	AY
~	~	~	~	~	~	0.25...0.40	5.2	KTA7-25S-0.4A-CG	399	AY
~	~	~	~	~	~	0.40...0.63	8.2	KTA7-25S-0.63A-CG	434	AY
~	~	~	~	~	1/2	0.63...1.0	13	KTA7-25S-1.0A-CG	434	AY
~	1/10	~	~	1/2	3/4	1.0...1.6	21	KTA7-25S-1.6A-CG	434	AY
1/10	1/6	1/2	1/2	1	1-1/2	1.6...2.5	33	KTA7-25S-2.5A-CG	434	AY
1/8	1/3	3/4	3/4	2	3	2.5...4	52	KTA7-25S-4.0A-CG	434	AY
1/4	1/2	1	1-1/2	3	5 ⑤	4...6.3	82	KTA7-25S-6.3A-CG	434	AY
1/2	1-1/2	2	3	5	7-1/2 ⑥	6.3...10	130	KTA7-25S-10A-CG	434	AY
1	2	3	~	10	10 ⑥	10...16	208	KTA7-25S-16A-CG	471	AY
1-1/2	3	5	5	~	15 ⑥	14.5...20	260	KTA7-25S-20A-CG	471	AY
2	3	7-1/2 ⑥	7-1/2 ⑥	15 ⑥	20 ⑥	18...25	325	KTA7-25S-25A-CG ⑥	471	AY
2	5	7-1/2 ⑥	10 ⑥	20 ⑥	25 ⑥	24...29	409	KTA7-32S-29A-CG ⑥	581	AY
2	5	7-1/2 ⑥	10 ⑥	25 ⑥	30 ⑥	27...32	448	KTA7-32S-32A-CG ⑥	581	AY

Non-metallic (IP65) Enclosure



#### Includes:

- Non-metallic (IP65) enclosure with integrated IP65 operator – watertight, dusttight
- KT7-25S/32S (Standard Interrupting Capacity) “Type E” Self-protected Manual Controller
- Terminal Adaptor for Type E Applications (Cat.# KT7-25-TE)
- Gray and black IP65 handle ④⑤

#### Modifications (Factory Assembled)

Description	Add Suffix to Cat. Number	Price Adder
<b>KT7 Auxiliaries &amp; Trip Contacts - Front Mount</b>		
1 NO Auxiliary	-A10	55
1 NC Auxiliary	-A01	55
1 NO + 1 NC Auxiliary	-A11	55
2 NO Auxiliaries	-A20	55
1 NO SC+OL + 1 NC Auxiliary	-T10A01	79
1 NO SC+OL + 1 NO Auxiliary	-T10A10	79
<b>KT7 Auxiliaries - Side Mount</b>		
2 NC Auxiliaries	-AS02	79
2 NO Auxiliaries	-AS20	79
1 NO + 1 NC Auxiliary	-AS11	79
<b>Additional KT7 Trip Contacts, Side Mount</b>		
1 NO SC+OL+1 NO SC	-R00	94
1 NO SC+OL+1 NC SC	-R01	94
1 NC SC+OL+1 NO SC	-R10	94
<b>Accessories</b>		
Undervoltage Release Module	-UA-*	126
Shunt Release Module	-AA-*	126

#### -UA..-AA Coil Codes (\*)

AC Coil Code	Voltage Range	
	50 Hz	60 Hz
24V	21V	24V
120V	105V	120V
240V	~	240...260V
480V	415V	480V
600V	550V	600V

① Horsepower ratings shown in the table above are for reference. The final selection of the manual starter depends on the actual motor full load current and service factor.

- For motor with service factor less than 1.15. Use motor nameplate full load current times 0.9 and choose the motor starter with the appropriate current range. Example: Motor FLC = 4.2A; S.F. = 1.0. 4.2A x 0.9 = 3.78A. Select catalog number KTA7-25S-4.0A.

② Magnetic trip is fixed at 13x the maximum value of the current adjustment range. Refer to page F5 in full catalog for applied KAIC ratings.

③ KTA7 may be applied to single phase loads if 3 poles of device are wired in series. See footnote ① for device selection criteria.

④ A red and yellow handle may be selected instead of the standard gray and black handle. Change “CG” suffix to “CJ”. Ex: Change KTA7-25S-0.16-CG to KTA7-25S-0.16-CJ.

⑤ Handles are built-in to the enclosure and are not available as components.

⑥ Catalog numbers and/or specific voltages (i.e. @ 575V) shaded in gray are suitable for use as a manual motor starter only because they are not type E rated. See page F5 in full catalog for ratings.

### Enclosed KTA7 - Type 4 / 4X / 12

Amp / Horsepower Rating							Non-metallic, Type 4 / 4X / 12 Enclosure		Catalog Number ④	Price	Dimension Code
Single Phase		Three Phase			O/L Relay Ampere Range	Magnetic Response Current					
115V	230V	200V	230V	460V			575V				
<b>Max. Horsepower ①②③</b>											
<b>KTA7-25S/32S Standard Interrupting Capacity</b>											
~	~	~	~	~	~	0.10...0.16	2.1	KTA7-25S-0.16A-VG	586	Q5	
~	~	~	~	~	~	0.16...0.25	3.3	KTA7-25S-0.25A-VG	586	Q5	
~	~	~	~	~	~	0.25...0.40	5.2	KTA7-25S-0.4A-VG	586	Q5	
~	~	~	~	~	~	0.40...0.63	8.2	KTA7-25S-0.63A-VG	611	Q5	
~	~	~	~	~	1/2	0.63...1.0	13	KTA7-25S-1.0A-VG	611	Q5	
~	1/10	~	~	1/2	3/4	1.0...1.6	21	KTA7-25S-1.6A-VG	611	Q5	
1/10	1/6	1/2	1/2	1	1-1/2	1.6...2.5	33	KTA7-25S-2.5A-VG	611	Q5	
1/8	1/3	3/4	3/4	2	3	2.5...4	52	KTA7-25S-4.0A-VG	611	Q5	
1/4	1/2	1	1-1/2	3	5 <sup>⑤</sup>	4...6.3	82	KTA7-25S-6.3A-VG	611	Q5	
1/2	1-1/2	2	3	5	7-1/2 <sup>⑤</sup>	6.3...10	130	KTA7-25S-10A-VG	611	Q5	
1	2	3	~	10	10 <sup>⑤</sup>	10...16	208	KTA7-25S-16A-VG	657	Q5	
1-1/2	3	5	5	~	15 <sup>⑤</sup>	14.5...20	260	KTA7-25S-20A-VG	657	Q5	
2	3	7-1/2 <sup>⑤</sup>	7-1/2 <sup>⑤</sup>	15 <sup>⑤</sup>	20 <sup>⑤</sup>	18...25	325	KTA7-25S-25A-VG	⑥ 657	Q5	
2	5	7-1/2 <sup>⑤</sup>	10 <sup>⑤</sup>	20 <sup>⑤</sup>	25 <sup>⑤</sup>	24...29	406	KTA7-32S-29A-VG	⑥ 767	Q5	
2	5	7-1/2 <sup>⑤</sup>	10 <sup>⑤</sup>	25 <sup>⑤</sup>	30 <sup>⑤</sup>	27...32	448	KTA7-32S-32A-VG	⑥ 767	Q5	
<b>KTA7-25H/32H High Interrupting Capacity</b>											
1/10	1/6	1/2	1/2	1	1-1/2	1.6...2.5	33	KTA7-25H-2.5A-VG	683	Q6	
1/8	1/3	3/4	3/4	2	3	2.5...4	52	KTA7-25H-4.0A-VG	683	Q6	
1/4	1/2	1	1-1/2	3	5	4...6.3	82	KTA7-25H-6.3A-VG	683	Q6	
1/2	1-1/2	2	3	5	7-1/2	6.3...10	130	KTA7-25H-10A-VG	729	Q6	
1	2	3	~	10	10	10...16	208	KTA7-25H-16A-VG	729	Q6	
1-1/2	3	5	5	~	15 <sup>⑤</sup>	14.5...20	260	KTA7-25H-20A-VG	729	Q6	
2	3	7-1/2	7-1/2	15	20 <sup>⑤</sup>	18...25	325	KTA7-25H-25A-VG	729	Q6	
2	5	7-1/2 <sup>⑤</sup>	10 <sup>⑤</sup>	20 <sup>⑤</sup>	25 <sup>⑤</sup>	24...29	406	KTA7-32H-29A-VG	⑥ 871	Q6	
2	5	7-1/2 <sup>⑤</sup>	10 <sup>⑤</sup>	25 <sup>⑤</sup>	30 <sup>⑤</sup>	27...32	448	KTA7-32H-32A-VG	⑥ 871	Q6	



#### Includes:

- Type 4 / 4X / 12 enclosure – watertight, dust-tight, corrosion resistant
- KTA7 “Type E” Self-protected Manual Controller (Standard Interrupting Capacity)
- Terminal Adaptor for Type E Applications (Cat.# KT7-25[45]-TE)
- Gray and black Type 4/4X/12; IP66 handle (Cat.# KT7-HTN) ④

#### Modifications (Factory Assembled)

Description	Add Suffix to Cat. Number	Price Adder
<b>KT7 Auxiliaries &amp; Trip Contacts - Front Mount</b>		
1 NO Auxiliary	-A10	55
1 NC Auxiliary	-A01	55
1 NO + 1 NC Auxiliary	-A11	55
2 NO Auxiliaries	-A20	55
1 NO SC+OL + 1 NC Auxiliary	-T10A01	79
1 NO SC+OL + 1 NO Auxiliary	-T10A10	79
<b>KT7 Auxiliaries - Side Mount</b>		
2 NC Auxiliaries	-AS02	79
2 NO Auxiliaries	-AS20	79
1 NO + 1 NC Auxiliary	-AS11	79
<b>Additional KT7 Trip Contacts, Side Mount</b>		
1 NO SC+OL +1 NO Mag	-R00	94
1 NO SC+OL +1 NC Mag	-R01	94
1 NC SC+OL +1 NO Mag	-R10	94
<b>Accessories</b>		
Undervoltage Release Module	-UA-*	126
Shunt Release Module	-AA-*	126

#### -UA..-AA Coil Codes (\*)

AC Coil Code	Voltage Range	
	50 Hz	60 Hz
24V	21V	24V
120V	105V	120V
240V	~	240...260V
480V	415V	480V
600V	550V	600V

① Horsepower ratings shown in the table above are for reference. The final selection of the manual starter depends on the actual motor full load current and service factor.

- For motor with service factor less than 1.15. Use motor nameplate full load current times 0.9 and choose the motor starter with the appropriate current range. Example: Motor FLC = 4.2A; S.F. = 1.0. 4.2A x 0.9 = 3.78A. Select catalog number KTA7-25S-4.0A.
- ② Magnetic trip is fixed at 13x the maximum value of the current adjustment range. Refer to page F5 in full catalog for applied KAIC ratings.
- ③ KTA7 may be applied to single phase loads if 3 poles of device are wired in series. See footnote ① for device selection criteria.

- ④ A red and yellow handle may be selected instead of the standard gray and black handle. Change “WG” suffix to “WJ”. Ex: Change KTA7-25S-0.16-VG to KTA7-25S-0.16-VJ.
- ⑤ Catalog numbers and/or specific voltages (i.e. @ 575V) shaded in gray are suitable for use as a manual motor starter only because they are not type E rated. See page F5 in full catalog for ratings.

### Enclosed KTA7 - Type 12

Amp / Horsepower Rating							Painted Steel, Type 12 Enclosure			
Max. Horsepower ①②③						O/L Relay Ampere Range	Magnetic Response Current	Catalog Number ④	Price	Dimension Code
Single Phase		Three Phase								
115V	230V	200V	230V	460V	575V					
<b>KTA7-25S/32S Standard Interrupting Capacity</b>										
~	~	~	~	~	~	0.10...0.16	2.1	<b>KTA7-25S-0.16A-DG</b>	628	L
~	~	~	~	~	~	0.16...0.25	3.3	<b>KTA7-25S-0.25A-DG</b>	628	L
~	~	~	~	~	~	0.25...0.40	5.2	<b>KTA7-25S-0.4A-DG</b>	628	L
~	~	~	~	~	~	0.40...0.63	8.2	<b>KTA7-25S-0.63A-DG</b>	662	L
~	~	~	~	~	1/2	0.63...1.0	13	<b>KTA7-25S-1.0A-DG</b>	662	L
~	1/10	~	~	1/2	3/4	1.0...1.6	21	<b>KTA7-25S-1.6A-DG</b>	662	L
1/10	1/6	1/2	1/2	1	1-1/2	1.6...2.5	33	<b>KTA7-25S-2.5A-DG</b>	662	L
1/8	1/3	3/4	3/4	2	3	2.5...4	52	<b>KTA7-25S-4.0A-DG</b>	662	L
1/4	1/2	1	1-1/2	3	5 <sup>⑤</sup>	4...6.3	82	<b>KTA7-25S-6.3A-DG</b>	662	L
1/2	1-1/2	2	3	5	7-1/2 <sup>⑥</sup>	6.3...10	130	<b>KTA7-25S-10A-DG</b>	662	L
1	2	3	~	10	10 <sup>⑥</sup>	10...16	208	<b>KTA7-25S-16A-DG</b>	662	L
1-1/2	3	5	5	~	15 <sup>⑥</sup>	14.5...20	260	<b>KTA7-25S-20A-DG</b>	698	L
2	3	7-1/2 <sup>⑥</sup>	7-1/2 <sup>⑥</sup>	15 <sup>⑥</sup>	20 <sup>⑥</sup>	18...25	325	<b>KTA7-25S-25A-DG</b> ⑥	698	L
2	5	7-1/2 <sup>⑥</sup>	10 <sup>⑥</sup>	20 <sup>⑥</sup>	25 <sup>⑥</sup>	24...29	406	<b>KTA7-32S-29A-DG</b> ⑥	808	L
2	5	7-1/2 <sup>⑥</sup>	10 <sup>⑥</sup>	25 <sup>⑥</sup>	30 <sup>⑥</sup>	27...32	448	<b>KTA7-32S-32A-DG</b> ⑥	808	L
<b>KTA7-25H/32H High Interrupting Capacity</b>										
1/10	1/6	1/2	1/2	1	1-1/2	1.6...2.5	33	<b>KTA7-25H-2.5A-DG</b>	725	L
1/8	1/3	3/4	3/4	2	3	2.5...4	52	<b>KTA7-25H-4.0A-DG</b>	725	L
1/4	1/2	1	1-1/2	3	5	4...6.3	82	<b>KTA7-25H-6.3A-DG</b>	725	L
1/2	1-1/2	2	3	5	7-1/2	6.3...10	130	<b>KTA7-25H-10A-DG</b>	771	L
1	2	3	~	10	10	10...16	208	<b>KTA7-25H-16A-DG</b>	771	L
1-1/2	3	5	5	~	15 <sup>⑥</sup>	14.5...20	260	<b>KTA7-25H-20A-DG</b>	771	L
2	3	7-1/2	7-1/2	15	20 <sup>⑥</sup>	18...25	325	<b>KTA7-25H-25A-DG</b>	771	L
2	5	7-1/2 <sup>⑥</sup>	10 <sup>⑥</sup>	20 <sup>⑥</sup>	25 <sup>⑥</sup>	24...29	406	<b>KTA7-32H-29A-DG</b> ⑥	913	L
2	5	7-1/2 <sup>⑥</sup>	10 <sup>⑥</sup>	25 <sup>⑥</sup>	30 <sup>⑥</sup>	27...32	448	<b>KTA7-32H-32A-DG</b> ⑥	913	L



#### Includes:

- Type 12 enclosure – dusttight
- KTA7 “Type E” Self-protected Manual Controller (Standard Interrupting Capacity)
- Terminal Adaptor for Type E Applications (Cat.# KT7-25-TE)
- Gray and black Type 4/4X/12; IP66 handle (Cat.# KT7-HTN) ④

#### Modifications (Factory Assembled)

Description	Add Suffix to Cat. Number	Price Adder
<b>KT7 Auxiliaries &amp; Trip Contacts - Front Mount</b>		
1 NO Auxiliary	-A10	55
1 NC Auxiliary	-A01	55
1 NO + 1 NC Auxiliary	-A11	55
2 NO Auxiliaries	-A20	55
1 NO SC+OL + 1 NC Auxiliary	-T10A01	79
1 NO SC+OL + 1 NO Auxiliary	-T10A10	79
<b>KT7 Auxiliaries - Side Mount</b>		
2 NC Auxiliaries	-AS02	79
2 NO Auxiliaries	-AS20	79
1 NO + 1 NC Auxiliary	-AS11	79
<b>Additional KT7 Trip Contacts, Side Mount</b>		
1 NO SC+OL +1 NO SC	-R00	94
1 NO SC+OL +1 NC SC	-R01	94
1 NC SC+OL +1 NO SC	-R10	94
<b>Accessories</b>		
Undervoltage Release Module	-UA-*	126
Shunt Release Module	-AA-*	126

#### -UA.-AA Coil Codes (\*)

AC Coil Code	Voltage Range	
	50 Hz	60 Hz
24V	21V	24V
120V	105V	120V
240V	~	240...260V
480V	415V	480V
600V	550V	600V

① Horsepower ratings shown in the table above are for reference. The final selection of the manual starter depends on the actual motor full load current and service factor.

- For motor with service factor less than 1.15. Use motor nameplate full load current times 0.9 and choose the motor starter with the appropriate current range. Example: Motor FLC = 4.2A; S.F. = 1.0. 4.2A x 0.9 = 3.78A. Select catalog number KTA7-25S-4.0A.

② Magnetic trip is fixed at 13x the maximum value of the current adjustment range. Refer to page F5 in full catalog for applied KAIC ratings.

③ KTA7 may be applied to single phase loads if 3 poles of device are wired in series. See footnote ① for device selection criteria.

④ A red and yellow handle may be selected instead of the standard gray and black handle. Change “DG” suffix to “DJ”. Ex: Change KTA7-25S-0.16-DG to KTA7-25S-0.16-DJ.

⑤ Catalog numbers and/or specific voltages (i.e. @ 575V) shaded in gray are suitable for use as a manual motor starter only because they are not type E rated. See page F5 in full catalog for ratings.

**Enclosed KTA7 - Type 4 / 12**

Amp / Horsepower Rating						Painted Steel, Type 4 / 12 Enclosure				Dimension Code
Max. Horsepower ①②③						O/L Relay Ampere Range	Magnetic Response Current	Catalog Number ④	Price	
Single Phase		Three Phase								
115V	230V	200V	230V	460V	575V					
<b>KTA7-25S/32S Standard Interrupting Capacity</b>										
~	~	~	~	~	~	0.10...0.16	2.1	<b>KTA7-25S-0.16A-WG</b>	<b>698</b>	W6
~	~	~	~	~	~	0.16...0.25	3.3	<b>KTA7-25S-0.25A-WG</b>	<b>698</b>	W6
~	~	~	~	~	~	0.25...0.40	5.2	<b>KTA7-25S-0.4A-WG</b>	<b>698</b>	W6
~	~	~	~	~	~	0.40...0.63	8.2	<b>KTA7-25S-0.63A-WG</b>	<b>732</b>	W6
~	~	~	~	~	1/2	0.63...1.0	13	<b>KTA7-25S-1.0A-WG</b>	<b>732</b>	W6
~	1/10	~	~	1/2	3/4	1.0...1.6	21	<b>KTA7-25S-1.6A-WG</b>	<b>732</b>	W6
1/10	1/6	1/2	1/2	1	1-1/2	1.6...2.5	33	<b>KTA7-25S-2.5A-WG</b>	<b>732</b>	W6
1/8	1/3	3/4	3/4	2	3	2.5...4	52	<b>KTA7-25S-4.0A-WG</b>	<b>732</b>	W6
1/4	1/2	1	1-1/2	3	5 <sup>⑤</sup>	4...6.3	82	<b>KTA7-25S-6.3A-WG</b>	<b>732</b>	W6
1/2	1-1/2	2	3	5	7-1/2 <sup>⑤</sup>	6.3...10	130	<b>KTA7-25S-10A-WG</b>	<b>732</b>	W6
1	2	3	~	10	10 <sup>⑤</sup>	10...16	208	<b>KTA7-25S-16A-WG</b>	<b>769</b>	W6
1-1/2	3	5	5	~	15 <sup>⑤</sup>	14.5...20	260	<b>KTA7-25S-20A-WG</b>	<b>769</b>	W6
2	3	7-1/2 <sup>⑤</sup>	7-1/2 <sup>⑤</sup>	15 <sup>⑤</sup>	20 <sup>⑤</sup>	18...25	325	<b>KTA7-25S-25A-WG</b> ⑥	<b>769</b>	W6
2	5	7-1/2 <sup>⑤</sup>	10 <sup>⑤</sup>	20 <sup>⑤</sup>	25 <sup>⑤</sup>	24...29	406	<b>KTA7-32S-29A-WG</b> ⑥	<b>879</b>	W6
2	5	7-1/2 <sup>⑤</sup>	10 <sup>⑤</sup>	25 <sup>⑤</sup>	30 <sup>⑤</sup>	27...32	448	<b>KTA7-32S-32A-WG</b> ⑥	<b>879</b>	W6
<b>KTA7-25H/32H High Interrupting Capacity</b>										
1/10	1/6	1/2	1/2	1	1-1/2	1.6...2.5	33	<b>KTA7-25H-2.5A-WG</b>	<b>796</b>	W6
1/8	1/3	3/4	3/4	2	3	2.5...4	52	<b>KTA7-25H-4.0A-WG</b>	<b>796</b>	W6
1/4	1/2	1	1-1/2	3	5	4...6.3	82	<b>KTA7-25H-6.3A-WG</b>	<b>796</b>	W6
1/2	1-1/2	2	3	5	7-1/2	6.3...10	130	<b>KTA7-25H-10A-WG</b>	<b>841</b>	W6
1	2	3	~	10	10	10...16	208	<b>KTA7-25H-16A-WG</b>	<b>841</b>	W6
1-1/2	3	5	5	~	15 <sup>⑤</sup>	14.5...20	260	<b>KTA7-25H-20A-WG</b>	<b>841</b>	W6
2	3	7-1/2	7-1/2	15	20 <sup>⑤</sup>	18...25	325	<b>KTA7-25H-25A-WG</b>	<b>841</b>	W6
2	5	7-1/2 <sup>⑤</sup>	10 <sup>⑤</sup>	20 <sup>⑤</sup>	25 <sup>⑤</sup>	24...29	406	<b>KTA7-32H-29A-WG</b> ⑥	<b>983</b>	W6
2	5	7-1/2 <sup>⑤</sup>	10 <sup>⑤</sup>	25 <sup>⑤</sup>	30 <sup>⑤</sup>	27...32	448	<b>KTA7-32H-32A-WG</b> ⑥	<b>983</b>	W6



**Includes:**

- Type 4 / 12 enclosure – watertight, dusttight
- KTA7 “Type E” Self-protected Manual Controller (Standard Interrupting Capacity)
- Terminal Adaptor for Type E Applications (Cat.# KT7-25[45]-TE)
- Gray and black Type 4/4X/12; IP66 handle (Cat.# KT7-HTN) ④

**Modifications (Factory Assembled)**

Description	Add Suffix to Cat. Number	Price Adder
<b>KT7 Auxiliaries &amp; Trip Contacts - Front Mount</b>		
1 NO Auxiliary	-A10	55
1 NC Auxiliary	-A01	55
1 NO + 1 NC Auxiliary	-A11	55
2 NO Auxiliaries	-A20	55
1 NO SC+OL + 1 NC Auxiliary	-T10A01	79
1 NO SC+OL + 1 NO Auxiliary	-T10A10	79
<b>KT7 Auxiliaries - Side Mount</b>		
2 NC Auxiliaries	-AS02	79
2 NO Auxiliaries	-AS20	79
1 NO + 1 NC Auxiliary	-AS11	79
<b>Additional KT7 Trip Contacts, Side Mount</b>		
1 NO SC+OL + 1 NO SC	-R00	94
1 NO SC+OL + 1 NC SC	-R01	94
1 NC SC+OL + 1 NO SC	-R10	94
<b>Accessories</b>		
Undervoltage Release Module	-UA-*	126
Shunt Release Module	-AA-*	126

**-UA..-AA Coil Codes (\*)**

AC Coil Code	Voltage Range	
	50 Hz	60 Hz
<b>24V</b>	21V	24V
<b>120V</b>	<b>105V</b>	<b>120V</b>
<b>240V</b>	~	240...260V
<b>480V</b>	415V	480V
<b>600V</b>	550V	600V

① Horsepower ratings shown in the table above are for reference. The final selection of the manual starter depends on the actual motor full load current and service factor.

- For motor with service factor less than 1.15. Use motor nameplate full load current times 0.9 and choose the motor starter with the appropriate current range. Example: Motor FLC = 4.2A; S.F. = 1.0. 4.2A x 0.9 = 3.78A. Select catalog number KTA7-25S-4.0A.


② Magnetic trip is fixed at 13x the maximum value of the current adjustment range. Refer to page F5 in full catalog for applied KAIC ratings.

③ KTA7 may be applied to single phase loads if 3 poles of device are wired in series. See footnote ① for device selection criteria.

④ A red and yellow handle may be selected instead of the standard gray and black handle. Change “WG” suffix to “WJ”. Ex: Change KTA7-25S-0.16-**WG** to KTA7-25S-0.16-**WJ**.

⑤ Catalog numbers and/or specific voltages (i.e. @ 575V) shaded in gray are suitable for use as a manual motor starter only because they are not type E rated. See page F5 in full catalog for ratings.

#### Enclosed Non-Reversing Combination Controller, AC Operation - Type 4 / 12

Amp / Horsepower Rating				Painted Steel, Type 4 / 12 Enclosure						
				O/L Relay Ampere Range	Magnetic Response Current	Index Ⓞ	Catalog Number Ⓞ	Price	Dimension Code	
										Max. Horsepower ①②③
Three Phase				O/L Relay Ampere Range	Magnetic Response Current	Index Ⓞ	Catalog Number Ⓞ	Price	Dimension Code	
200V	230V	460V	575V							
<b>KTA7-25S Standard Interrupting Capacity</b>										
~	~	~	~	0.10...0.16	2.1	1	CX7-9-10-*-AS0.16A-A10-WG	918	W6	
~	~	~	~	0.16...0.25	3.3	2	CX7-9-10-*-AS0.25A-A10-WG	918	W6	
~	~	~	~	0.25...0.40	5.2	3	CX7-9-10-*-AS0.4A-A10-WG	918	W6	
~	~	~	~	0.40...0.63	8.2	4	CX7-9-10-*-AS0.63A-A10-WG	953	W6	
~	~	~	1/2	0.63...1.0	13	5	CX7-9-10-*-AS1.0A-A10-WG	953	W6	
~	~	1/2	3/4	1.0...1.6	21	6	CX7-9-10-*-AS1.6A-A10-WG	953	W6	
1/2	1/2	1	1-1/2	1.6...2.5	33	7	CX7-9-10-*-AS2.5A-A10-WG	953	W6	
3/4	3/4	2	3	2.5...4	52	8	CX7-9-10-*-AS4.0A-A10-WG	953	W6	
1	1-1/2	3	~	4...6.3	82	9	CX7-9-10-*-AS6.3A-A10-WG	953	W6	
2	3	5	~	6.3...10	130	11	CX7-12-10-*-AS10A-A10-WG	988	W6	
3	~	10	~	10...16	208	12	CX7-16-10-*-AS16A-A10-WG	1044	W6	
5	5	~	~	14.5...20	260	15	CX7-23-10-*-AS20A-A10-WG	1065	W6	
<b>KTA7-25H High Interrupting Capacity</b>										
1/2	1/2	1	1-1/2	1.6...2.5	33	17	CX7-9-10-*-AH2.5A-A10-WG	1015	W6	
3/4	3/4	2	3	2.5...4	52	19	CX7-9-10-*-AH4.0A-A10-WG	1015	W6	
1	1-1/2	3	5	4...6.3	82	22	CX7-9-10-*-AH6.3A-A10-WG	1015	W6	
2	3	5	7-1/2	6.3...10	130	24	CX7-12-10-*-AH10A-A10-WG	1095	W6	
3	~	10	10	10...16	208	28	CX7-16-10-*-AH16A-A10-WG	1116	W6	
5	5	~	~	14.5...20	260	31	CX7-23-10-*-AH20A-A10-WG	1137	W6	
~	7-1/2	15	~	18...25	325	33	CX7-23-10-*-AH25A-A10-WG	1137	W6	

#### Includes:

- Type 12 / 4 enclosure - watertight, dusttight
- KTA7 "Type E/F" Self-protected Motor Controller with 1 NO front mount Auxiliary Contact (Cat #: KT7-PE1-10)
- Terminal Adaptor for Type E Applications (Cat.# KT7-25[45]-TE)
- CA7 contactor (for remote operation), AC coil
- Power wiring
- Gray and black Type 4/4X/12; IP66 handle (Cat.# KT7-HTN) ④
- Pilot device shown is factory installed option

See page ?? for factory installed modifications

#### Contactor AC Coil Codes (\*)

AC Coil Code	Voltage Range	
	50 Hz	60 Hz
24Z	24V	24V
120	110V	120V
220W	~	208V-240V
480	440V	480V
600	550v	600V

① Horsepower ratings shown in the table above are for reference. *The final selection of the manual starter depends on the actual motor full load current and service factor.*

- For motor with service factor less than 1.15. Use motor nameplate full load current times 0.9 and choose the motor starter with the appropriate current range. Example: Motor FLC = 4.2A; S.F. = 1.0. 4.2A x 0.9 = 3.78A. Select catalog number KTA7-25S-4.0A.

- ② Magnetic trip is fixed at 13x the maximum value of the current adjustment range.
- ③ CX7 may be applied to single phase loads. See footnote 1 for device selection criteria. To order single phase unit, change "CX7" in catalog number to "CBX7". Three pole series connection will be provided. Ex: Change CX7-9-10-\*-0.16A-A10-WG to CBX7-9-10-\*-0.16A-A10-WG.

- ④ A red and yellow handle may be selected instead of the standard gray and black handle. Change "WG" suffix to "WJ". Ex: Change CX7-9-10-\*-0.16A-A10-WG to CX7-9-10-\*-0.16A-A10-WJ.

- ⑤ KAIC Assembly Rating Index. See pages F60-62 in full catalog for Application Rating Guide.

**Non-Reversing and Reversing Combination Controller Modifications (Factory Assembled)**

Description	Add Suffix to Catalog Number	Price Adder
<b>Pilot Devices ❶</b>		
START-STOP multi-function pushbutton	-3U	195
ON-OFF multi-function pushbutton	-4U	195
HAND-AUTO selector switch	-5	195
OFF-ON selector switch	-6	195
HAND-OFF-AUTO selector switch	-7	195
Pilot light only ❷	-1	134
Pilot lights only (2) ❷	-2	260
Pilot light w/ START-STOP multi-function pushbutton ❸	-13U	330
Pilot light w/ ON-OFF multi-function pushbutton ❸	-14U	330
Pilot light w/ HAND-AUTO selector switch ❸	-15	330
Pilot light w/ OFF-ON selector switch ❸	-16	330
Pilot light w/ HAND-OFF-AUTO selector switch ❸	-17	330
<b>Control Power Transformer</b> (with fused primary and secondary)		
<i>Primary volts</i>	<i>Secondary volts</i>	
240	120	<b>XB</b>
50 watt	120	<b>XC</b>
Standard Capacity	24	<b>XE</b>
480	24	<b>XF</b>
600	24	<b>XJ</b>

Description	Add Suffix to Catalog Number	Price Adder
<b>KT7 Auxiliaries &amp; Trip Contacts - Front Mount</b>		
1 NO Auxiliary	-A10	55
1 NC Auxiliary	-A01	55
1 NO + 1 NC Auxiliary	-A11	55
2 NO Auxiliaries	-A20	55
1 NO SC+OL + 1 NC Auxiliary	-T10A01	79
1 NO SC+OL + 1 NO Auxiliary	-T10A10	79
<b>KT7 Auxiliaries - Side Mount</b>		
2 NC Auxiliaries	-AS02	79
2 NO Auxiliaries	-AS20	79
1 NO + 1 NC Auxiliary	-AS11	79
<b>CA7 Auxiliary Contacts</b>		
1 NO Auxiliary	-S10	45
1 NC Auxiliary	-S01	45
<b>CA7 Contactor Accessories</b>		
Electronic Interface	-JE ❹	94

Replace (\*) in catalog # with the following codes ❷

❶ Currently supply D7 multi-function pushbuttons as standard which do not require protective boots to meet Type 4X. See Section H in this catalog for description (all suffix's ending in "U").  
 ❷ Factory modifications often change the enclosure size. Refer to factory for dimensions when critical to the installation.

❸ Pilot Lights may be applied with 24VAC/VDC, 120VAC or 240VAC Control Circuit. Pilot Lights with 380 VAC...575VAC require a control circuit transformer.  
 ❹ CRI7E-24 will be used. CRI7E-12 by special order only.

**ORANGE EXPRESS**  
**Motor Circuit Controllers**  
**TECH**

**Enclosure Dimensions**

Dimensions are in decimal inches. Dimensions not intended for manufacturing purposes.

**IP65 ENCLOSURE**

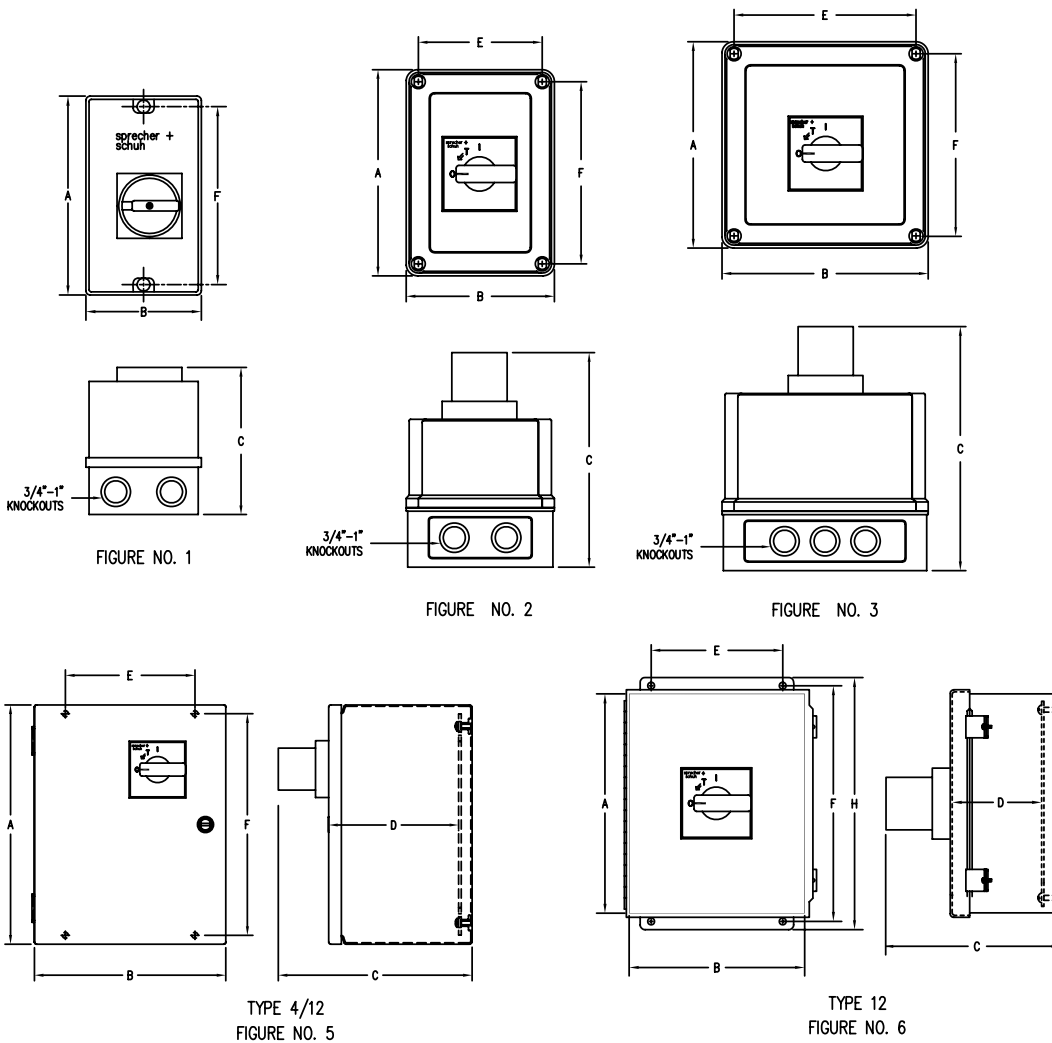
Encl. ID Dim.	Figure No.	Enclosure Size			Mtg Depth	Mtg Centers		Panel Size Sub-Pan	
		A	B	C	D	E	F		
AY	1	5.91	3.54	5.12	N/A	N/A	5.32	N/A	N/A

**TYPE-4/4X/12 ENCLOSURE**

Encl. ID Dim.	Figure No.	Enclosure Size			Mtg Depth	Mtg Centers		Panel Size Sub-Pan	
		A	B	C	D	E	F		
Q5	2	7.00	5.03	7.35	4.3	4.21	6.18	N/A	N/A
Q6	3	7.00	7.00	8.35	5.3	6.18	6.18	N/A	N/A

**TYPE-4/12 & 12 ENCLOSURES**

Encl. ID Dim.	Figure No.	Enclosure Size			Mtg Depth	Mtg Centers		Panel Size Sub-Pan		H
		A	B	C	D	E	F			
W6	5	9.84	7.87	8.24	5.31	5.31	9.13	9.09	7.13	-
L	6	8	6	8.33	5.53	4	8.75	6.75	4.88	9.5



# Motor Current Rating Chart

Series CA8, CA7, CA6 & CA5

Horsepower	60 Hz AC Induction Motor						
	Single Phase		Three Phase				
	115 Volt	230 Volt	200 Volt	230 Volt	380-415 Volt	460 Volt	575 Volt
1/6	4.4	2.2	~	~		~	~
1/4	5.8	2.9	~	~		~	~
1/3	7.2	3.6	~	~		~	~
1/2	9.8	4.9	2.5	2.2	1.3	1.1	0.9
3/4	13.8	6.9	3.7	3.2	1.8	1.6	1.3
1	16.0	8.0	4.8	4.2	2.3	2.1	1.7
1 1/2	20.0	10.0	6.9	6.0	3.3	3.0	2.4
2	24.0	12.0	7.8	6.8	4.3	3.4	2.7
3	34.0	17.0	11.0	9.6	6.1	4.8	3.9
5	56.0	28.0	17.5	15.2	9.7	7.6	6.1
7 1/2	80.0	40.0	25.0	22.0	14.0	11.0	9.0
10	100	50.0	32.0	28.0	18.0	14.0	11.0
15	135	68.0	48.0	42.0	27.0	21.0	17.0
20	~	88.0	62.0	54.0	34.0	27.0	22.0
25	~	110	78.0	68.0	43.0	34.0	27.0
30	~	136	92.0	80.0	51.0	40.0	32.0
40	~	176	120	104	66.0	52.0	41.0
50	~	216	150	130	83.0	65.0	52.0
60	~	~	177	154	103	77.0	62.0
75	~	~	221	192	128	96.0	77.0
100	~	~	285	248	165	124	99.0
125	~	~	359	312	208	156	125
150	~	~	414	360	240	180	144
175	~	~	475	413	275	207	168
200	~	~	552	480	320	240	192
250	~	~	692	602	403	302	242
300	~	~	~	~	482	361	289
350	~	~	~	~	560	414	336
400	~	~	~	~	636	477	382
450	~	~	~	~	711	515	412
500	~	~	~	~	786	590	472

The information in this chart was derived from Table 430-148 & 430-150 of the NEC and Table 50.1 of UL standard 508A. The voltages listed are rated motor voltages. The currents listed shall be permitted for system voltage ranges of 110-120, 220-240, 380-415, 440-480 and 550-600 volts.

The full-load current values are for motors running at usual speeds and motors with normal torque characteristics. Motors built for especially

low speeds or high torques may have higher full-load currents, and multi-speed motors will have full-load currents varying with speed. In these cases, the nameplate current ratings shall be used.

**Caution: The actual motor amps may be higher or lower than the average values listed above. For more reliable motor protection, use the actual motor current as listed on the motor nameplate. Use this table as a guide only**



**Sprecher + Schuh USA Headquarters**  
15910 International Plaza Driver  
Houston, Texas 77032  
Tel: (281) 442-9000 Fax: (281) 442-1570

**[www.sprecherschuh.com](http://www.sprecherschuh.com)**

LIT-CAT-ORNGEXP-411 Jun2011