

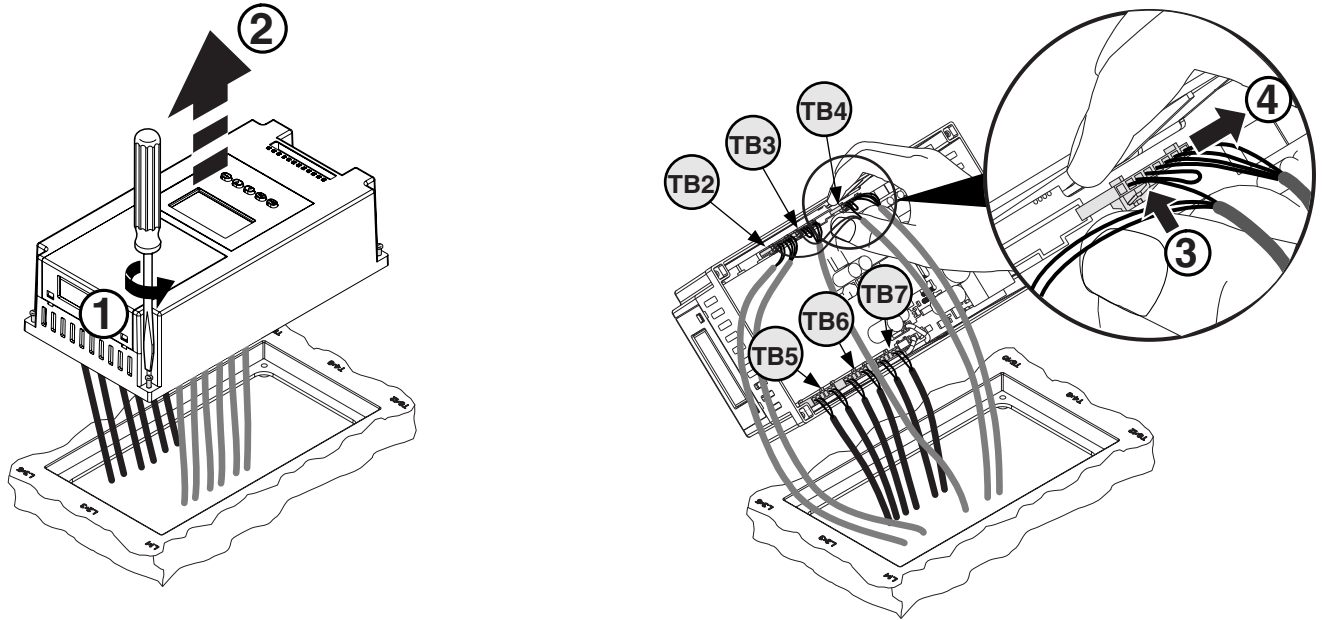
sprecher+ schuh PF_ (5-1250A) Control Module Replacement

(Cat PFS, PFS-024, PFB, PFB-024, PFD-_____, PFD-_____-024)



ATTENTION: To prevent electrical shock, disconnect from power source before installing or servicing. Install in suitable enclosure. Keep free from contaminants.

Control Module Removal



Control Module Installation

