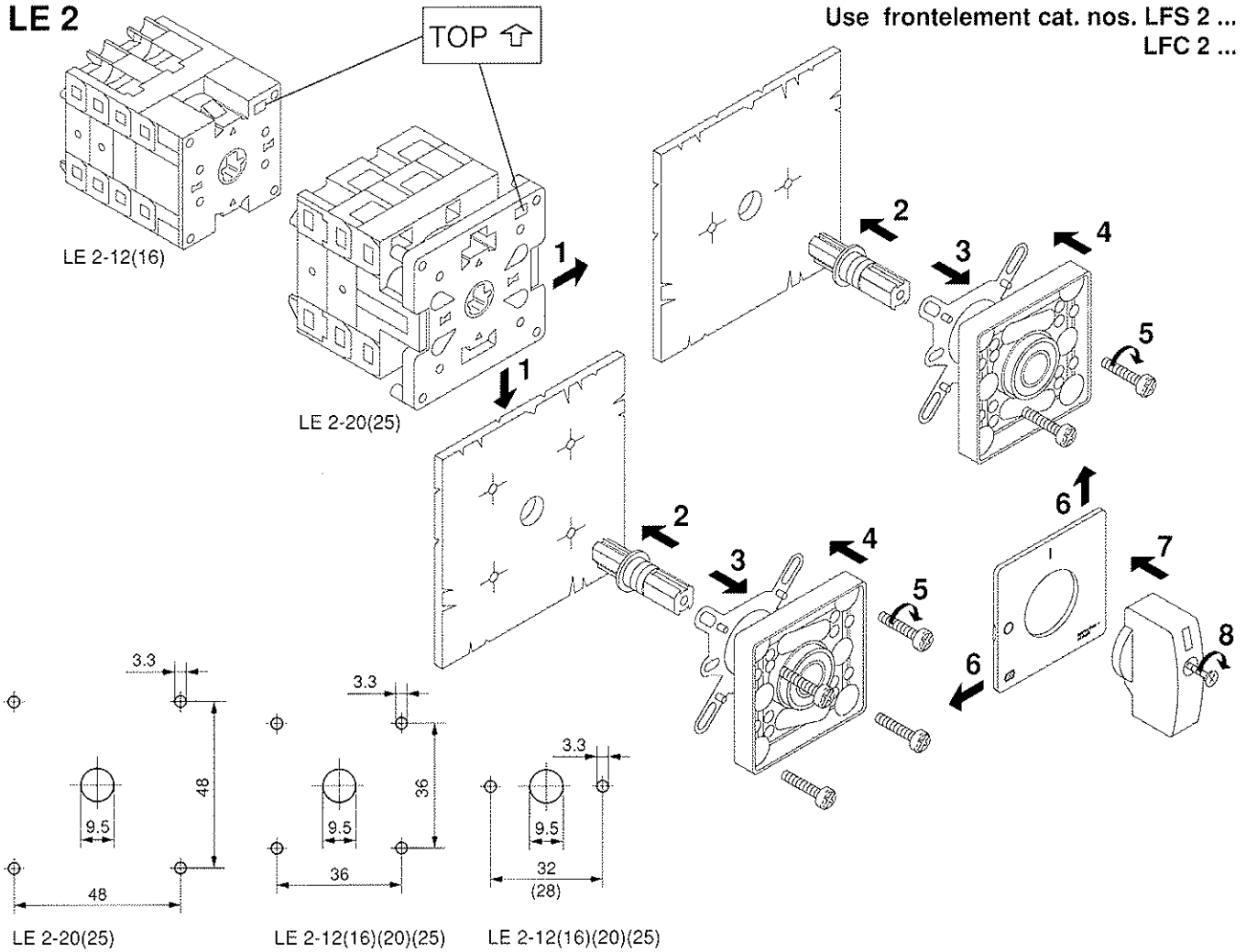
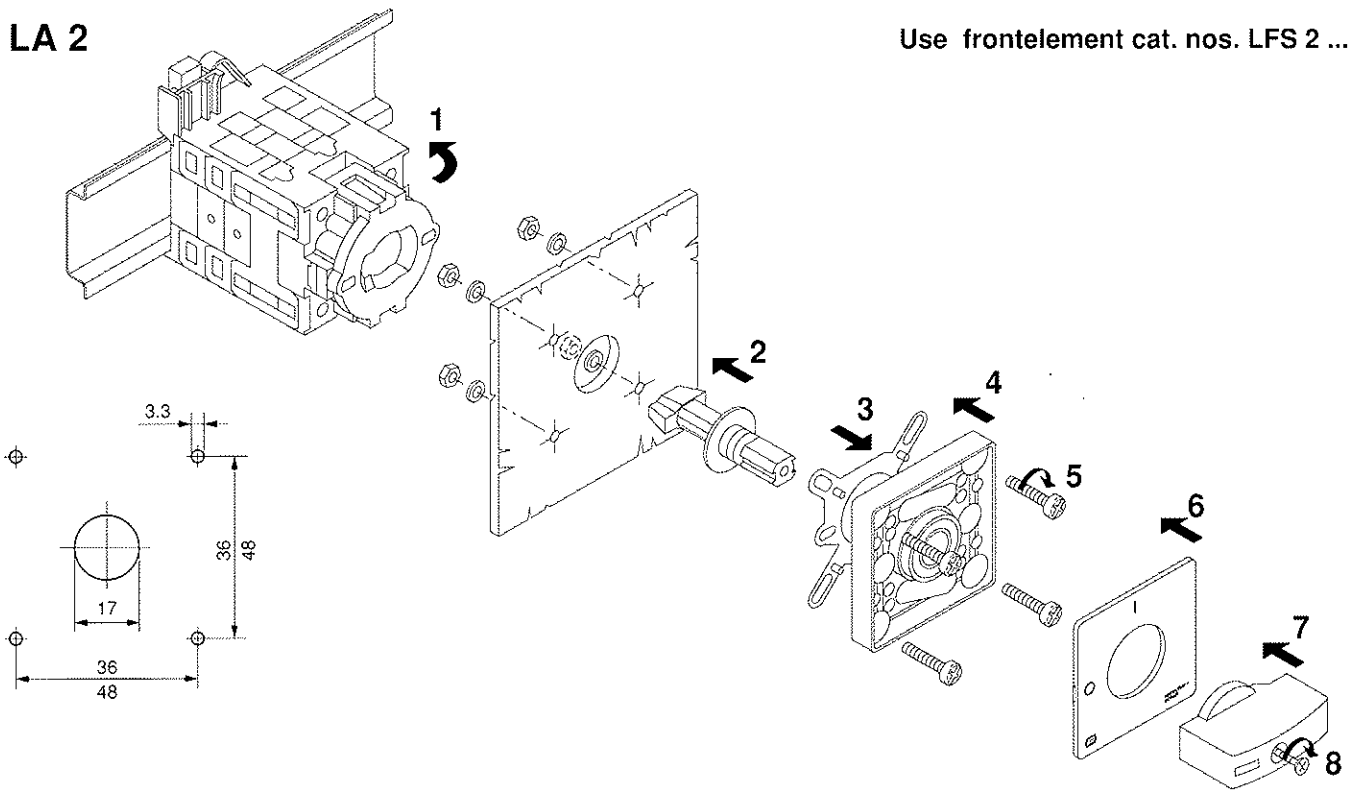


## LE 2



## LA 2



TYPE	AC-1 AC21/22A	IEC/EN 60947-3			GENERAL USE	UL - CSA				MAX FUSE *	These devices are suitable for use on a circuit capable of delivering not more than 5,000 rms symmetrical amperes, 600V max. when protected by a *K5 class fuse.	TORQUE				
		AC3/AC23A				SUITABLE AS MOTOR DISCONNECT						9 lb-in 1Nm	10.8 lb-in 1.15 Nm			
L2-12	690 V 12A	V~ kW	230 2.2	400 4	690 5.5	12A 600 Vac	V~ HP	120 1 0.5	240 2 1	480 5 2	600 5 3			3ph/3p 1ph/2p	20A	
L2-16	690 V 16A	V~ kW	230 3	400 5.5	690 7.5	16A 600 Vac	V~ HP	120 1.5 0.75	240 3 1.5	480 7.5 3	600 7.5 3	3ph/3p 1ph/2p				
L2-20	690 V 20A	V~ kW	230 4.5	400 7.5	690 7.5	20A 600 Vac	V~ HP (FLA)	120 2(13.6) 1(16)	240 4(12.4) 2(12)	480 8(11.6) 4(11.2)	600 10(11) 5(11.2)	3ph/3p 1ph/2p	25A			
L2-25	690 V 25A	V~ kW	230 5.5	400 11	690 7.5/11	25A 600 Vac	V~ HP (FLA)	120 3(19.2) 1.5(20)	240 6(18) 3(17)	480 12(17) 6(17)	600 15(17) 7.5(16)	3ph/3p 1ph/2p				

ANSCHLUSSPLAN  
WIRING DIAGRAMS

SCHEMA DES CONNEXIONS  
SCHEMI DI COLLEGAMENTO

