

Switch Disconnect

Attention: To prevent electrical shock, disconnect from power source before installing or servicing.

Lastschalter

Achtung: Vor Installations- oder Servicearbeiten Stromversorgung unterbrechen, um Unfälle zu vermeiden.

Sectionneur de charge

Attention: Avant le montage et la mise en service, couper l'alimentation secteur afin d'éviter tout accident.

Interruttori - sezionatori

Attenzione: Per prevenire infortuni, togliere tensione prima dell'installazione o manutenzione.

Interruptores - seccionadores

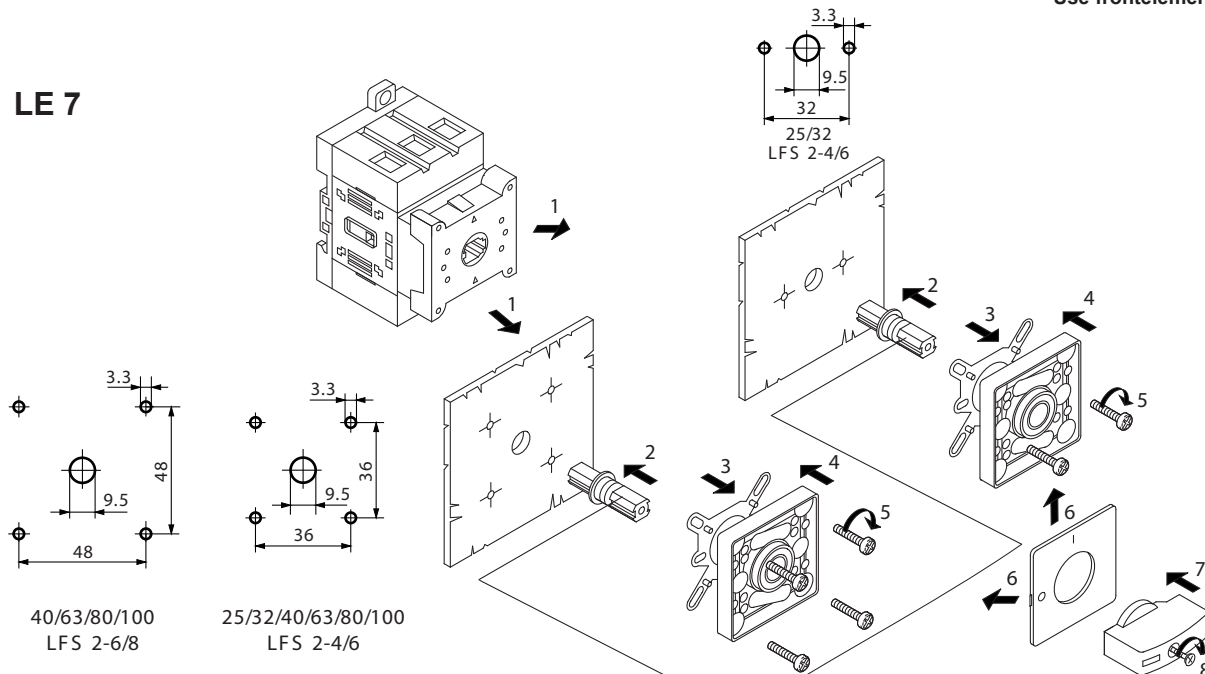
Atención: Desconectar la alimentación eléctrica antes de realizar el montaje y la puesta en servicio, con el objeto de evitar accidentes.

LE 7 / LA 7

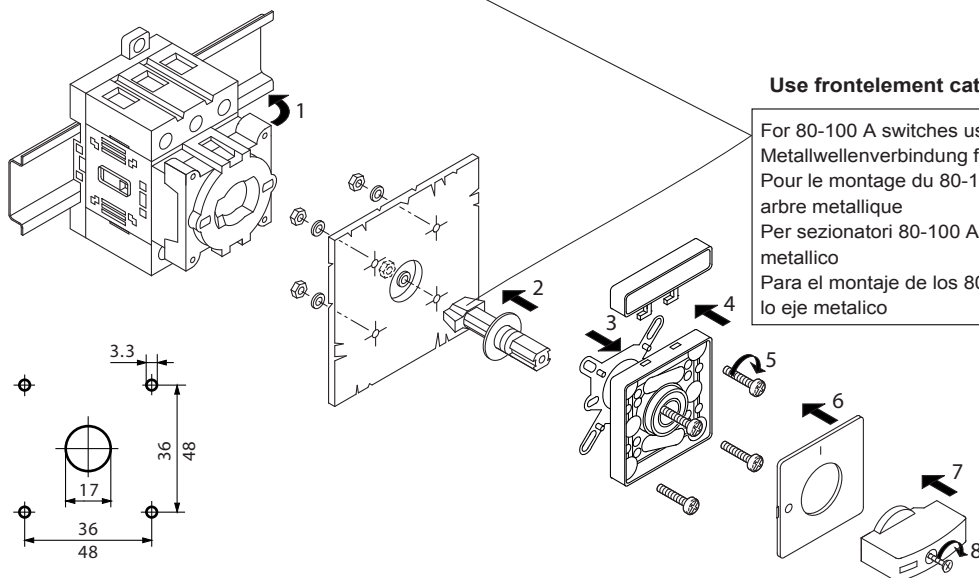


Use frontelement cat. nos. LFS 2...
LFC 2...

LE 7



LA 7



Use frontelement cat. nos. LFS 2...

For 80-100 A switches use metal shaft
Metallwellenverbindung für 80-100 A
Pour le montage du 80-100 A utiliser un
arbre métallique
Per sezionatori 80-100 A usare l'albero
metallico
Para el montaje de los 80-100 A utilizar
lo eje metálico

TYPE	AC21A	IEC VDE BS	AC23A				GENERAL USE	MOTOR STARTING					UL - CSA FUSE (A) *	WIRE	TORQUE				
								V~	120	240	480	600				1ph	3ph		
L7-25	690V 25A	Ui 690V	V~	230	400	690	600 Vac 25A	V~	120	240	480	600	35	60/75°C Cu WIRE ONLY	12lb-in 1.4Nm				
			kW	7.5	11	11		Hp	1	2	3	5				10	10		
L7-32	690V 32A	Ui 690V	V~	230	400	690	600 Vac 32A	V~	120	240	480	600	80			60/75°C Cu WIRE ONLY	25lb-in 2.8Nm		
			kW	7.5	15	15		Hp	1	3	5	5						15	15
L7-40	690V 40A	Ui 690V	V~	230	400	690	600 Vac 40A	V~	120	240	480	600	150					60/75°C Cu WIRE ONLY	50lb-in 5.6Nm
			kW	15	22	18.5		Hp	2	3	7.5	7.5							
L7-63	690V 63A	Ui 690V	V~	230	400	690	600 Vac 63A	V~	120	240	480	600	150	60/75°C Cu WIRE ONLY	65lb-in 7.1Nm				
			kW	18.5	30	22		Hp	3	5	10	10							
L7-80	690V 80A	Ui 690V	V~	230	400	690	600 Vac 80A	V~	120	240	480	600	150			60/75°C Cu WIRE ONLY	65lb-in 7.1Nm		
			kW	22	37	37		Hp	5	10	15	15							
L7-100	690V 100A	Ui 690V	V~	230	400	690	600 Vac 100A	V~	120	240	480	600	150					60/75°C Cu WIRE ONLY	65lb-in 7.1Nm
			kW	30	55	45		Hp	7.5	15	30	25							

* These devices are suitable for use on a circuit of delivering not more than 5000 rms symmetrical amperes, 600 V ac max. when protected by class K5 fuses.

ANSCHLUSSPLAN - WIRING DIAGRAMS - SCHEMA DE CONNEXION - SCHEMI DI COLLEGAMENTO

