

Attention: To prevent electrical shock, disconnect from power source before installing or servicing. Install in suitable enclosure. Keep free from contaminants. Manual operation of the contactor may cause welding of the contacts.

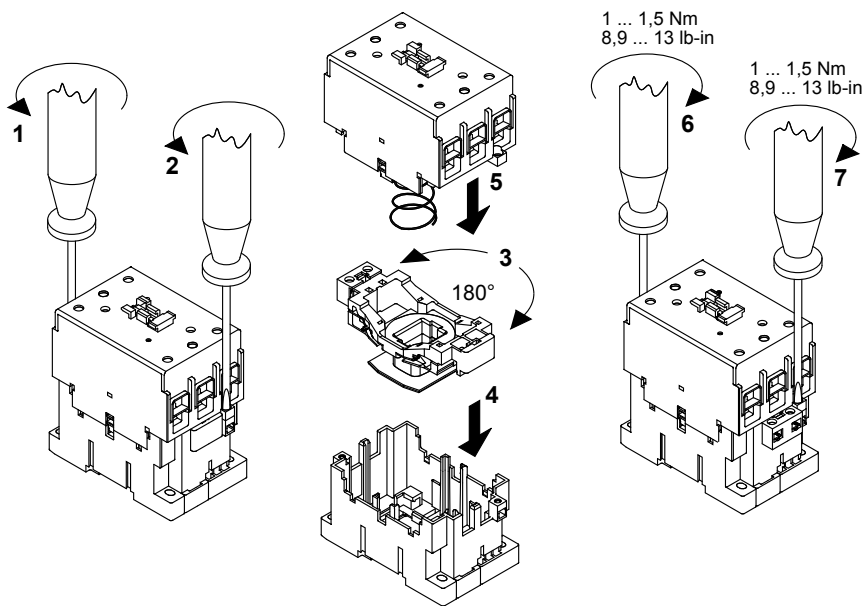
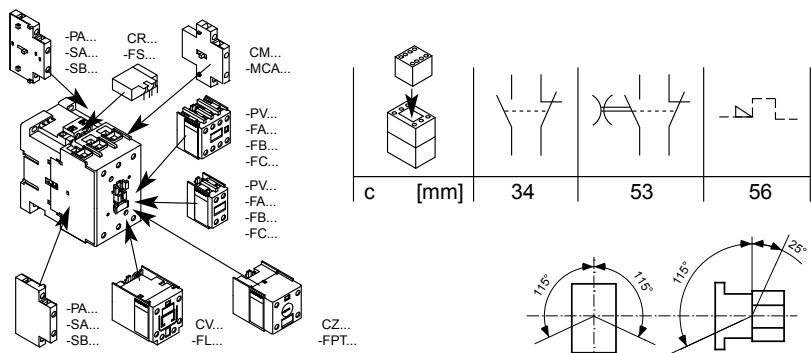
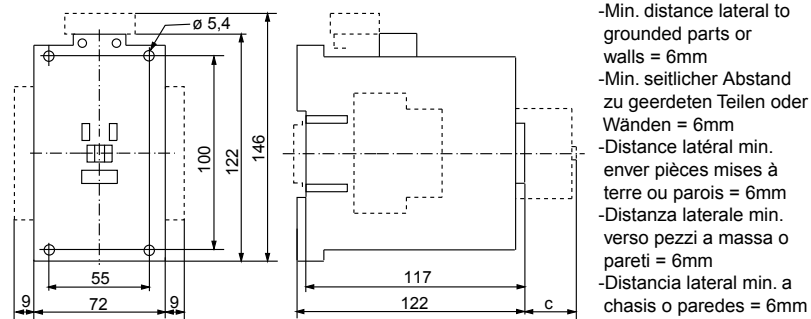
Achtung: Vor Installations- oder Servicearbeiten Stromversorgung unterbrechen, um Unfälle zu vermeiden. Die Geräte müssen in einem passenden Gehäuse eingebaut und gegen Verschmutzung geschützt werden. Das Betätigen des Schützes von Hand kann zu Kontaktverschweissen führen.

Attenzione: Per prevenire infortuni, togliere tensione prima dell'installazione o manutenzione. Installare in custodia idonea. Tenere lontano da contaminanti. L'azionamento manuale del contattore può engendrar la saldatura dei contatti.

Attention: Avant le montage et la mise en service, couper l'alimentation secteur afin d'éviter tout accident. Prévoir une mise en coffret ou armoire appropriée. Protéger le produit contre les environnements agressifs. L'opération manuelle del contactore può causare la saldatura dei contatti.

Atención: Desconectar la alimentación eléctrica antes de realizar el montaje y la puesta en servicio, con el objeto de evitar accidentes. Instalado en una caja o armario apropiado. Proteger el producto de los ambientes agresivos. La operación manual del contactor puede causar la soldadura de los contactos.

[mm]

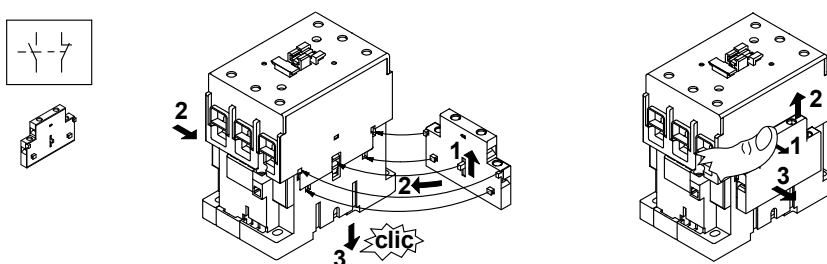


| | | | |
|----|--|--|---|
| | | 18 mm 1 x 2.5...35 mm ² 2 x 2.5...25 mm ² No. 14...1 AWG Use 75°C Cu wire only | 4.5...6 Nm 40...53 lb-in |
| A1 | | 9 mm 1 x 1...2.5 mm ² 2 x 1...2.5 mm ² No. 16...12 AWG Use 75°C Cu wire only | 1...1.5 Nm 8,9...13 lb-in No 3 Pozidriv No 2 |
| A2 | | 1 x 1...4 mm ² 2 x 1...4 mm ² No. 16...12 AWG | |

| | | |
|---|-----------|--------|
| IEC 60947-4-1 EN 60947-4-1 $U_e \leq 690 \text{ V}$ | gG — max. | max. |
| | Type 1 | Type 2 |
| | 250 A | 160 A |
| | 250 A | 160 A |
| | 250 A | 160 A |
| | 250 A | 200 A |
| IEC 60947-5-1 EN 60947-5-1 | gG — max. | |
| | 10 A | |

USA/CND Suitable for use on a circuit capable of delivering not more than XXX rms symmetrical amperes

| Size | Standard Fault Currents | | High Available Fault Currents | |
|------|-------------------------|----------------------|-------------------------------|----------------------|
| | Max. Fuse | Max. Circuit Breaker | Max. Class J Fuse | Max. Circuit Breaker |
| | 600V Max. | | 600V Max. | 480V Max. |
| | XXX = 5.000 | | XXX = 100.000 | XXX = 65.000 |
| 60 | 200 A | 200 A | 80 A | 100 A |
| | XXX = 10.000 | | | |
| 72 | 250 A | 250 A | 100 A | 100 A |
| 85 | 300 A | 250 A | 150 A | 100 A |
| 97 | 350 A | 250 A | — | — |



IEC 60947-1/-4-1/-5-1
EN 60947-1/-4-1/-5-1
UL 508; CSA 22.2 No.14;