

Terminal Block / Rahmenklemmenblock

Installation instructions

Assemble and dismantle only when de-energized!

Montageanleitung

Montage und Demontage nur im spannungsfreien Zustand!

Instructions de montage

Montage et démontage uniquement hors tension!

Istruzioni per il montaggio

Montaggio e smontaggio in mancanza di tensione

Instrucciones de montaje

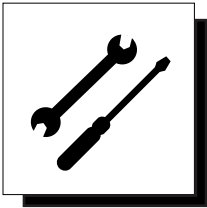
¡Montar y desmontar únicamente sin tensión!!

sprecher + schuh

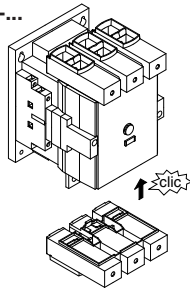
CA6-HB1

CA6-HB2

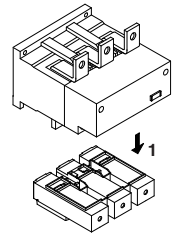
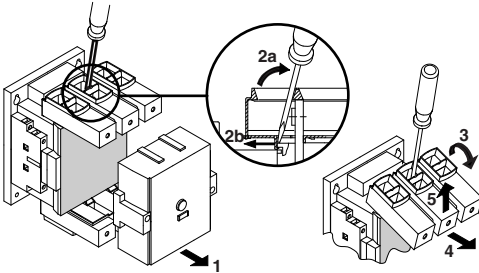
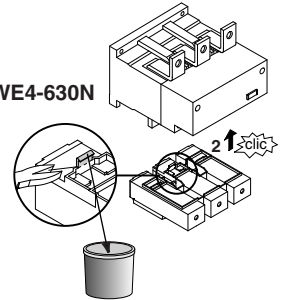
CA6-HB3




CA6-...



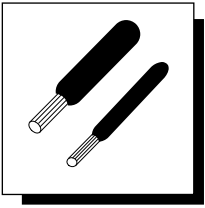
CEF1-52/CWE4-630N



Contactor Schütz contacteur contattori contactor	CA6-95 CA6-110	CA6-95 CA6-110 CA6-140 1) CA6-180 1)	CA6-210 CA6-250 CA6-300 CA6-420
Coil type Spule Bobine Bobina Bobina	conventional konventionell conventionnelle convencional	electronic elektronisch électronique electrónica	electronic elektronisch électronique electrónica
Motor Protection Motorschutz Protection pour moteurs protezione motore proteccion de motores	CEF1-11 CEF1-12	CWE4-180	CEP7-C1-180 CEP7-C2-180
Conductor rails Stromschienen Barres conductrices Sbarre porta-corrente Barras de corriente	CWE4-VM CWE4-VS	CWE4-VM2 CWE4-VS2	CEF1-52 CWE4-630-N CEP7-C1-420 CEP7-C2-420
	CA6-HB1	CA6-HB2	CA6-HB3

1) Electronic and conventional coil
1) Elektronische und konventionelle Spule
1) Bobine électronique et conventionnelle

1) Bobina electrónica e convencional
1) Bobina electrónica y convencional



sprecher+schuh

			CA6-HB1	CA6-HB2	CA6-HB3
L1 L2 L3 1 3 5 2 4 6 T1 T2 T3			 _____ 16...35 mm ² 16...70 mm ² 16...50 mm ² 16...95 mm ² 16...50 mm ² 16...95 mm ²	 _____ 16...35 mm ² 16...95 mm ² 16...50 mm ² 16...120 mm ² 16...50 mm ² 16...120 mm ²	 _____ 25...185 mm ² 25...185 mm ² 25...240 mm ² 25...240 mm ² 25...240 mm ² 25...240 mm ²
			 3...9 x 16 mm 3...12 x 16 mm T: 12 Nm	 3...9 x 20 mm 3...14 x 20 mm T: 14 Nm max. 210 A encl.	 6...20 x 25 mm 6...20 x 25 mm T: 25 Nm max. 400 A encl.
		 No. 6...1/0 AWG No. 6...3/0 AWG T: 106 lb-in	 No. 6...1/0 AWG No. 6...250 MCM T: 124 lb-in	 No. 4 AWG...600MCM No. 4 AWG...600MCM T: 220 lb-in	
		X = 22 mm	X = 25 mm	X = 30 mm	
		Y = 5 mm	Y = 5 mm	Y = 6 mm	

