



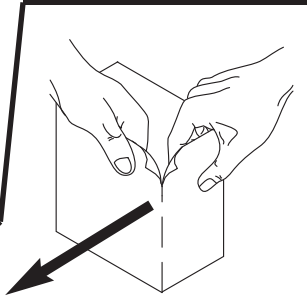
Attention: To prevent electrical shock, disconnect from power source before installing or servicing. Install in suitable enclosure. Keep free from contaminants. Manual operation of the contactor may cause welding of the contacts.

Achtung: Vor Installations- oder Servicearbeiten Stromversorgung unterbrechen, um Unfälle zu vermeiden. Die Geräte müssen in einem passenden Gehäuse eingebaut und gegen Verschmutzung geschützt werden. Das Betätigen des Schützes von Hand kann zu Kontaktverschweissen führen.

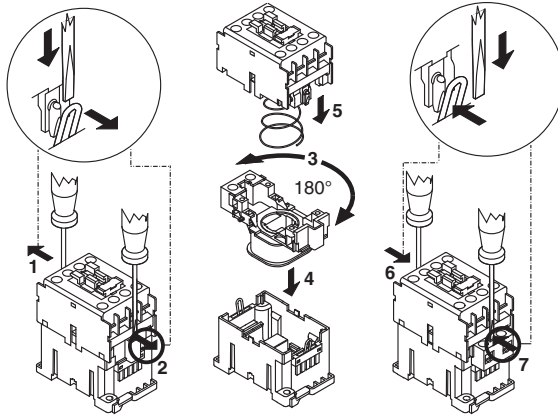
Attenzione: Per prevenire infortuni, togliere tensione prima dell'installazione o manutenzione. Installare in custodia idonea. Tenere lontano da contaminanti. L'azionamento manuale del contactore può engendrar la saldatura dei contatti.

Attention: Avant le montage et la mise en service, couper l'alimentation secteur afin d'éviter tout accident. Prévoir une mise en coffret ou armoire appropriée. Protéger le produit contre les environnements agressifs. L'opération manuelle du contacteur peut engendrer la soudure des contacts.

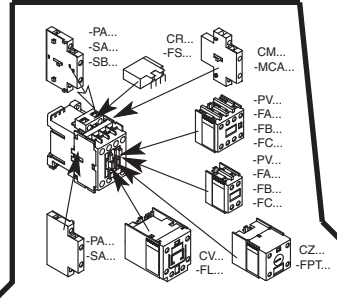
Atención: Desconectar la alimentación eléctrica antes de realizar el montaje y la puesta en servicio, con el objeto de evitar accidentes. Instalado en una caja o armario apropiado. Proteger el producto de los ambientes agresivos. La operación manual del contactor puede causar la soldadura de los contactos.



 1.5...2.5 Nm 13...22 lb-in No 3 Pozidriv No 2	 1...1.5 Nm 8.9...13 lb-in No 3 Pozidriv No 2
2 x 1...4 mm ² No. 16...10 AWG Use 75°C Cu wire only 2 x 1.5...6 mm ² No. 16...10 AWG	1 x 1...2.5 mm ² No. 16...12 AWG Use 75°C Cu wire only 1 x 1...4 mm ² No. 16...12 AWG



- Min. distance lateral to grounded parts or walls = 6 mm (0.25 in.)
- Min. seitlicher Abstand zu geerdeten Teile oder Wände = 6 mm (0.25 in.)
- Distance latéral min. enver pièces mises à terre ou parois = 6 mm (0.25 in.)
- Distanza laterale min. verso pezzi a massa o pareti = 6 mm (0.25 in.)
- Distancia lateral min. a chasis o paredes = 6 mm (0.25 in.)

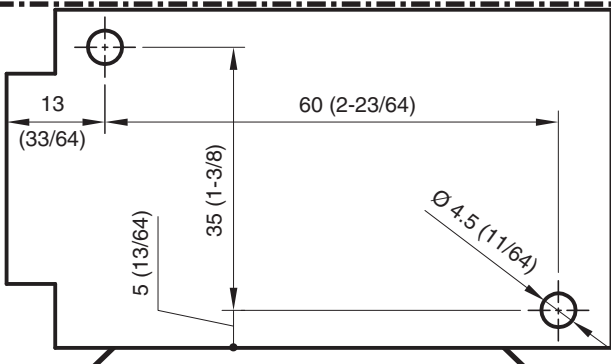
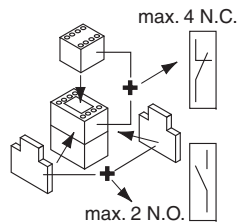
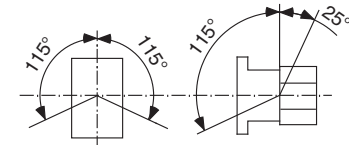


max.	Type 2			
	Type 2	Type 2	max.	
gG	Type 1	25 A	gG	max.
		35 A		
		35 A		
		40 A		
20 A	Type 2	50 A	20 A	max.
		50 A		
		50 A		
		80 A		
IEC 60947-4-1 EN 60947-4-1 Ue ≤ 690 V	9 12 16 23			
IEC 60947-5-1 EN 60947-5-1				

USA/CND

Suitable for use on a circuit capable of delivering not more than XXX rms symmetrical amperes.

Size	XXX = 5,000		XXX = 100,000
	Max. Fuse	Max. Circuit Breaker	Max. Class J or CC Fuse
9	35 A	30 A	20 A
12	40 A	30 A	20 A
16	70 A	50 A	30 A
23	90 A	50 A	40 A
NEMA Size 00	40 A	30 A	20 A
NEMA Size 0	40 A	40 A	30 A
NX205 / NX206	40 A	-	20 A
NX207	90 A	-	30 A
NX208	90 A	-	40 A



IEC 60947-1/-4-1/-5-1
EN 60947-1/-4-1/-5-1
UL 508; CSA 22.2 No. 14;

