

Installation instructions

To be commissioned and maintained only by qualified personnel;
pay attention to the operating instructions!

Montageanleitung

Inbetriebsetzung und Wartung nur durch Fachpersonal;
Betriebsanleitung beachten!

Instructions de montage

Mise en service et entretien: seulement par du personnel spécialisé;
respecter les instructions d'exploitation!

Istruzioni per il montaggio

Messa in servizio e manutenzione solo da personale specializzato;
attenersi alle istruzioni per l'esercizio!

Instrucciones de montaje

iPuesta en servicio y mantenimiento exclusivamente por personal
especializado; respetar las instrucciones de puesta en servicio y
mantenimiento!

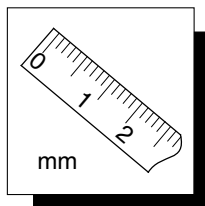
KT7-HTN

KT7-HTRY

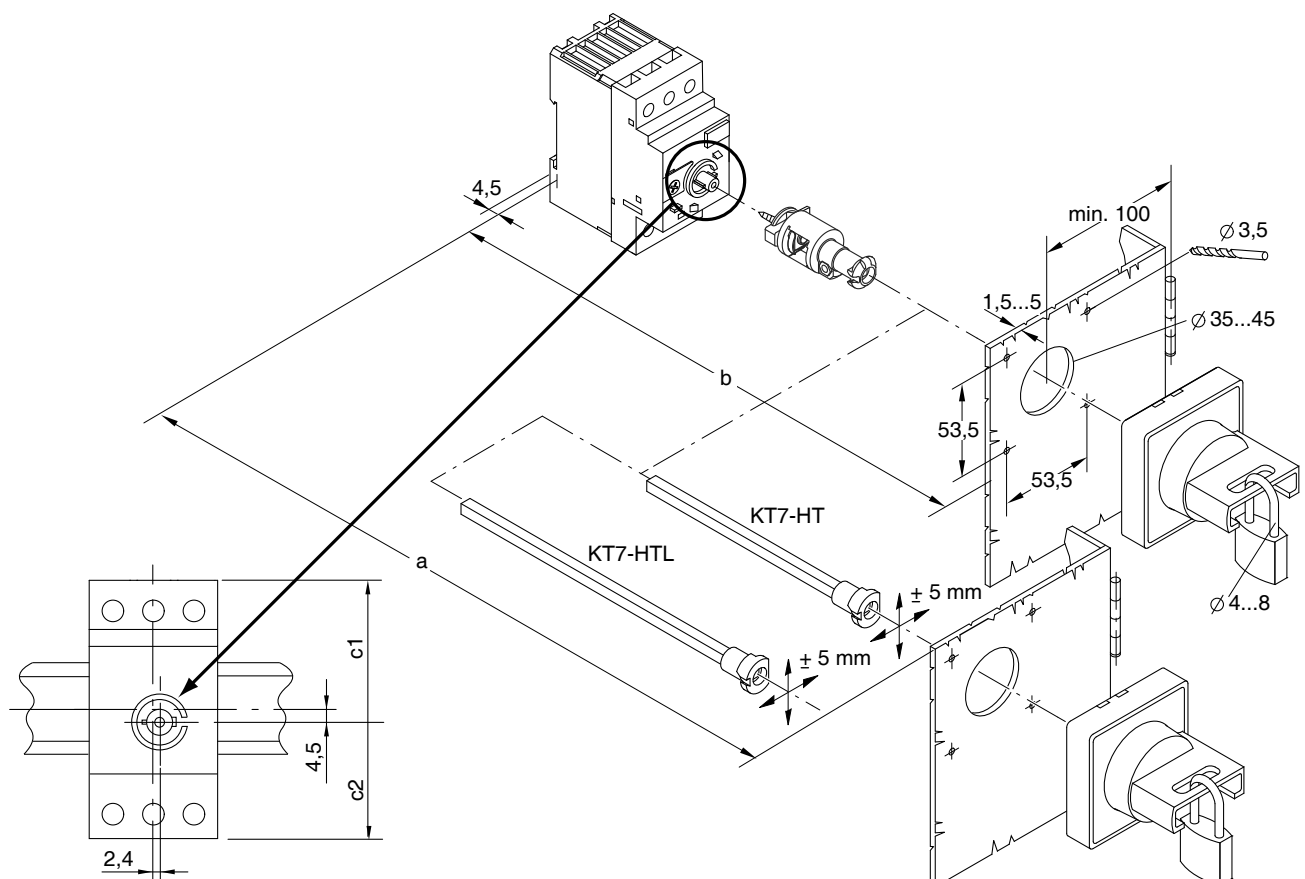
(Type 3,3R,4,4X,12 / IP66)

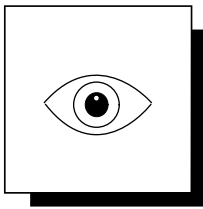


Mount handle on a flat surface for Type 3, 3R, 4, 4X and 12 enclosures
Pour les coffrets de types 3, 3R, 4, 4X et 12 monter la poignée sur une surface plane
Für Gehäuse Typ 3, 3R, 4, 4X und 12 Hebel auf ebener Fläche montieren
Monte el mando en una superficie plana para las cajas del tipo 3, 3R, 4, 4X y 12
Montar o manipulo numa superficie lisa para recintos tipo 3, 3R, 4, 4Xe 12
Montare la maniglia su una superficie piatta per le custodie tipo 3, 3R, 4, 4X e 12

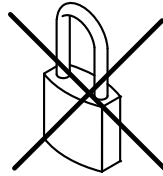


	a (KT7-HT)	a (KT7-HTL)	b	c1	c2
KT7-25/32S	117...338	117...488	105,5 ±5	49,5	40,5
KT7-R25S	117...338	117...488	105,5 ±5	49,2	41,5
KT7-25/32H	126...347	126...497	114,5 ±5	49,5	40,5
KT7-45H	148,6...369,6	148,6...519	137,1 ±5	59,35	50,35
KTU7-D	126...347	126...497	114,5 ±5	55,5	46,5

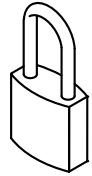




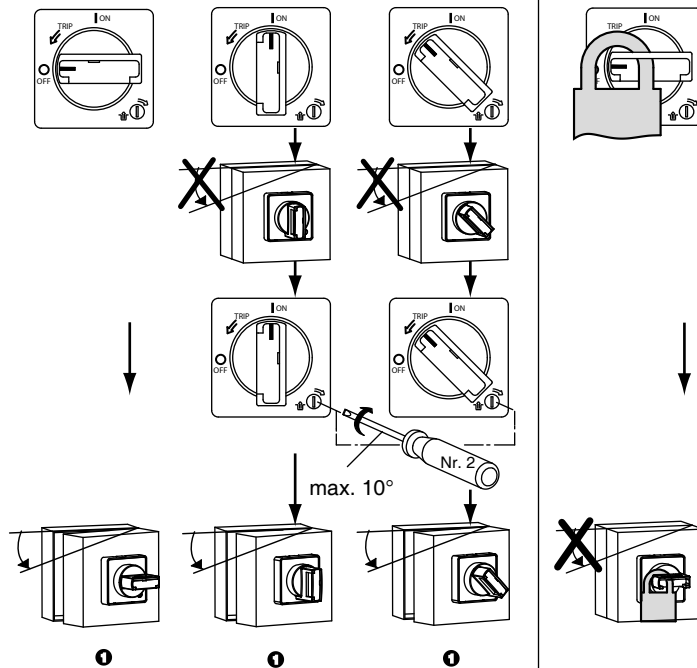
Manipulation without
 Manipulationen ohne
 Manipulations sans
 Manipulazioni senza
 Manipulaciones sin



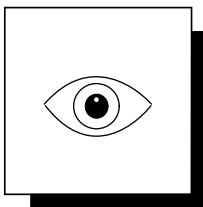
Manipulation with
 Manipulationen mit
 Manipulations avec
 Manipulazioni con
 Manipulaciones con



Handle positions
 Griffstellungen
 Positions de la crosse
 Posizioni di presa
 Posiciones de agarre

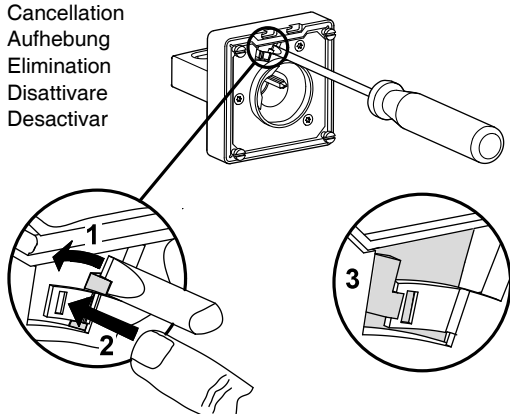


Door opening possibilities
 Türöffnungsmöglichkeiten
 Possibilités d'ouverture de la porte
 Possibilità di aprire la porta
 Posibilidades de apertura de la puerta

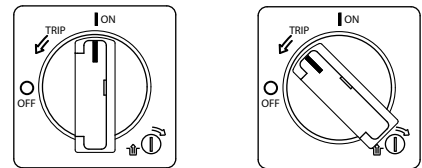


Cancellation of door interlocking, only admissible with KT7-HTN
Aufhebung der Türverriegelung, nur zulässig bei KT7-HTN
Elimination du verrouillage de la porte seulement permise avec KT7-HTN
E' consentito disattivare il bloccaggio della porta solo in KT7-HTN
Está permitido desactivar el bloqueo de la puerta solo en KT7-HTN

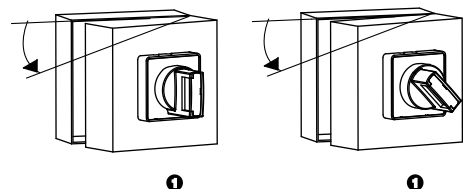
Cancellation
 Aufhebung
 Elimination
 Disattivare
 Desactivar



Handle positions
 Griffstellungen
 Positions de la crosse
 Posizioni di presa
 Posición de agarre



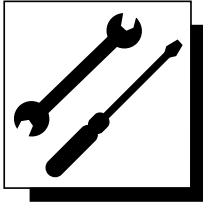
Door opening possibilities
 Türöffnungsmöglichkeiten
 Possibilités d'ouverture de la porte
 Possibilità di aprire la porta
 Posibilidades de apertura de la puerta



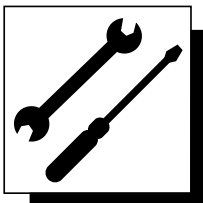
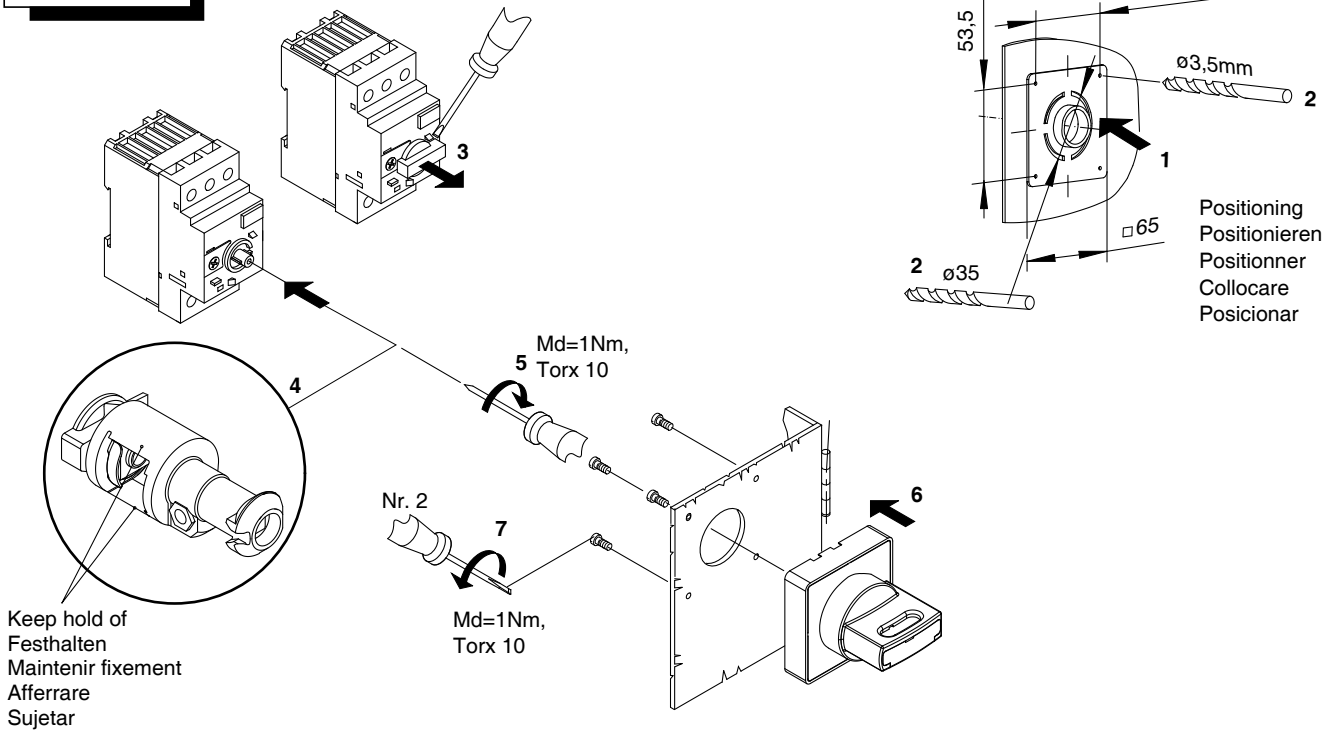
1



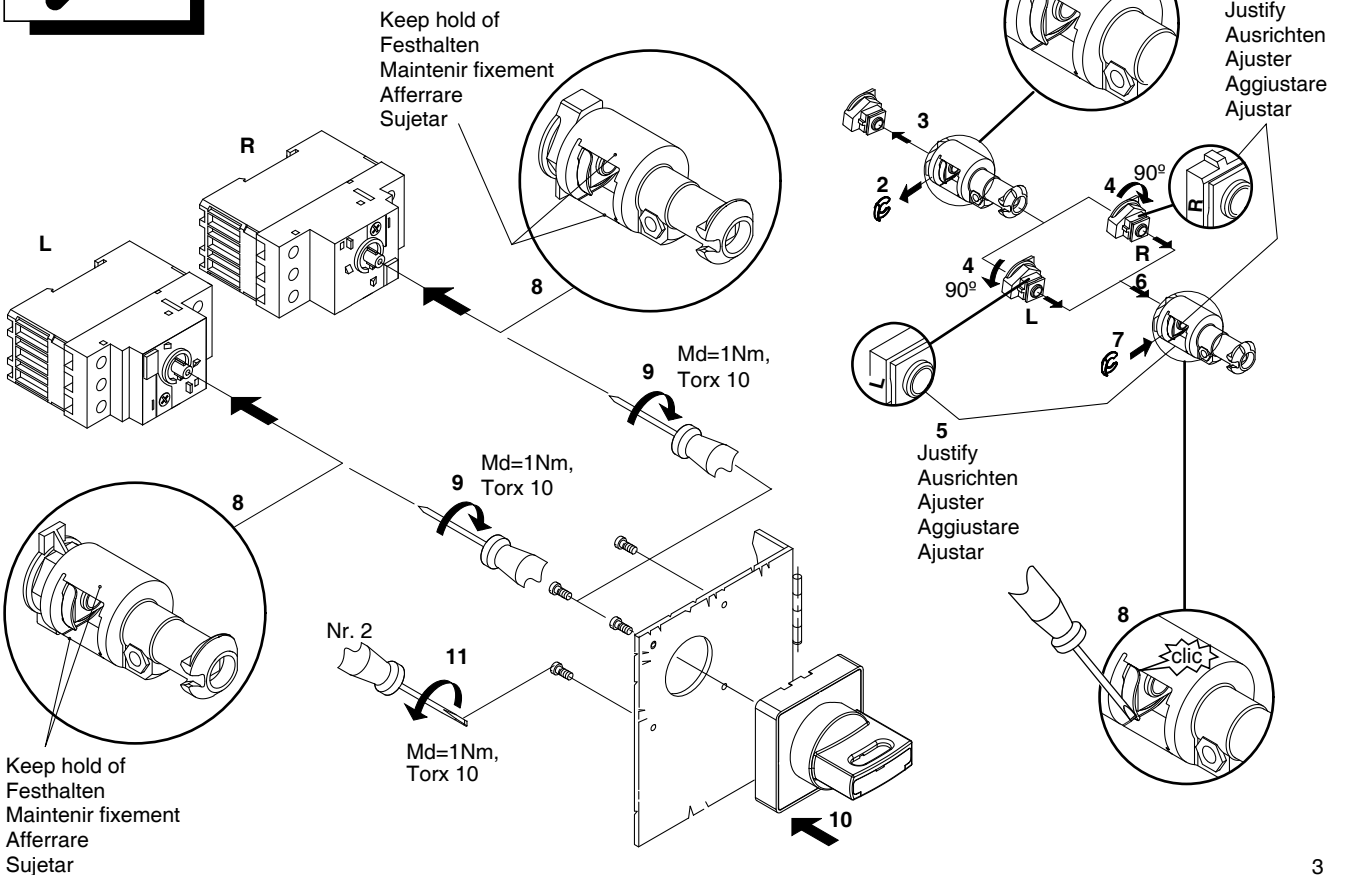
Warning: Don't change handle position at opened doors
 Warnung: Bei geöffneter Tür Griffstellung nicht verändern
 Attention: Lorsque la porte est ouverte, ne pas changer la position de la crosse
 Attenzione: Non modifichi la posizione di presa quando le porte sono aperte
 Atención: No cambie la posición de agarre con las puertas abiertas

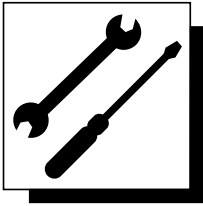


Mounting of KT7-HTN / KT7-HTRY
Montage von KT7-HTN / KT7-HTRY
Montage des KT7-HTN / KT7-HTRY
Montaggio di KT7-HTN / KT7-HTRY
Montaje de KT7-HTN / KT7-HTRY

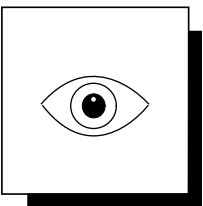
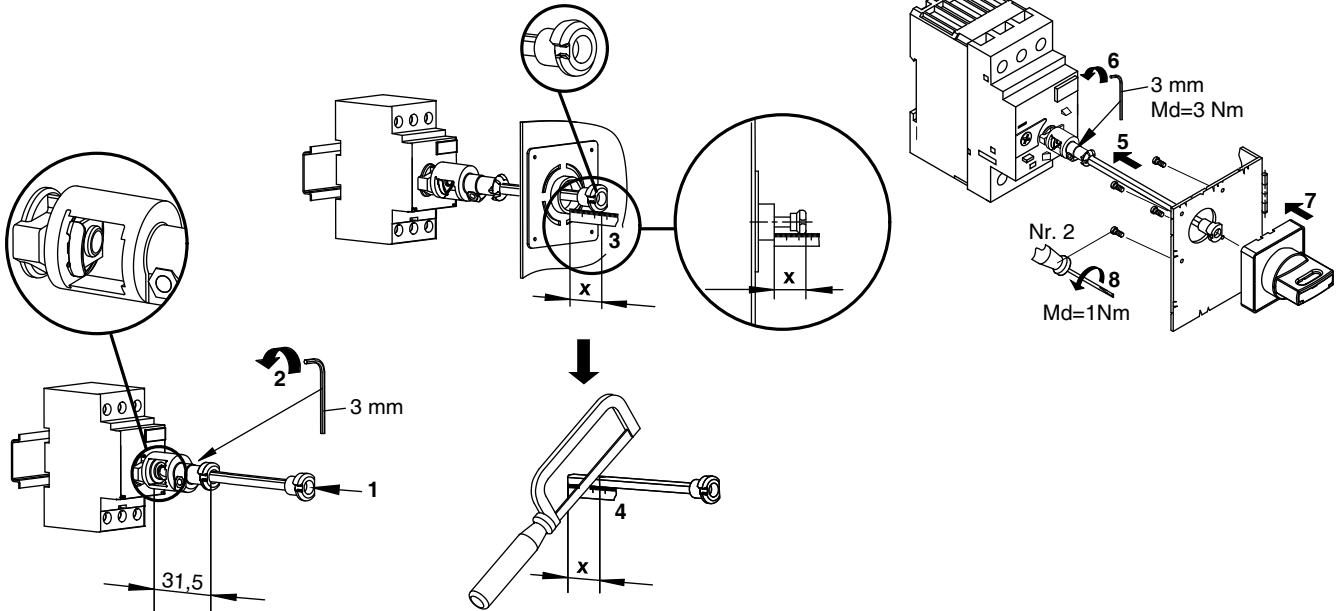


Mounting of KT7-HTN / KT7-HTRY pos. horizontal
Montage von KT7-HTN / KT7-HTRY querlage
Montage des KT7-HTN / KT7-HTRY pos. horizontale
Montaggio di KT7-HTN / KT7-HTRY pos. horizontale
Montaje de KT7-HTN / KT7-HTRY pos. horizontal



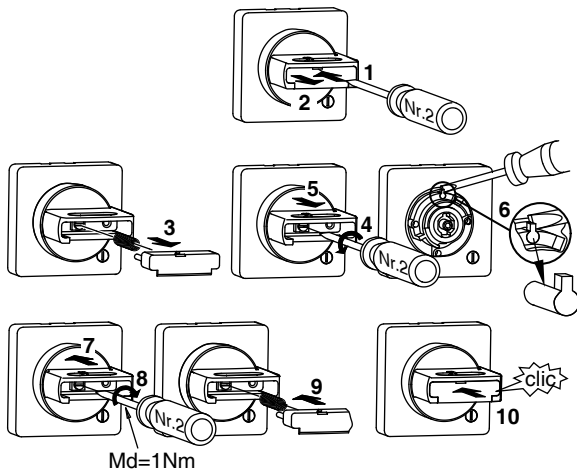


Mounting of KT7-HTN / KT7-HTRY + KT7-HT/KT7-HTL
Montage von KT7-HTN / KT7-HTRY + KT7-HT/KT7-HTL
Montage des KT7-HTN / KT7-HTRY + KT7-HT/KT7-HTL
Montaggio di KT7-HTN / KT7-HTRY + KT7-HT/KT7-HTL
Montaje de KT7-HTN / KT7-HTRY + KT7-HT/KT7-HTL

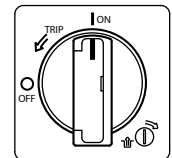


Activation of lockability at ON position, only admissible with KT7-HTN
Aktivierung der Abschliessbarkeit in ON Stellung, nur zulässig bei KT7-HTN
Activation du verrouillage en ON position, seulement permise avec KT7-HTN
E'consentita l'attivazione della chiusura nella posizione ON solo in KT7-HTN
Está permitida la activación del cierre en posición ON solo en KT7-HTN

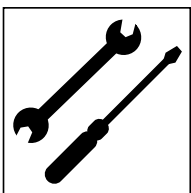
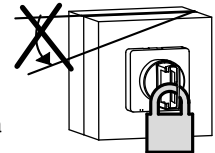
Activation
Aktivierung
Activation
Attivazione
Activación



Handle position
Griffstellung
Position de la crosse
Posizione di presa
Posición de agarre



Door opening possibilities
Türöffnungsmöglichkeiten
Possibilités d'ouverture de la porte
Possibilità di aprire la porta
Posibilidades de apertura de la puerta



Mounting of KT7-HTFCN / DFCRY
Montage von KT7-HTFCN / DFCRY
Montage des KT7-HTFCN / DFCRY
Montaggio di KT7-HTFCN / DFCRY
Montaje de KT7-HTFCN / DFCRY

