

Installation instructions

To be commissioned and maintained only by qualified personnel;
pay attention to the operating instructions!

KT7-25-TRE

Montageanleitung

Inbetriebsetzung und Wartung nur durch Fachpersonal;
Betriebsanleitung beachten!

Instructions de montage

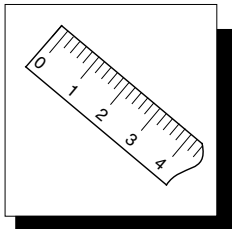
Mise en service et entretien: seulement par du personnel spécialisé;
respecter les instructions d'exploitation!

Istruzioni per il montaggio

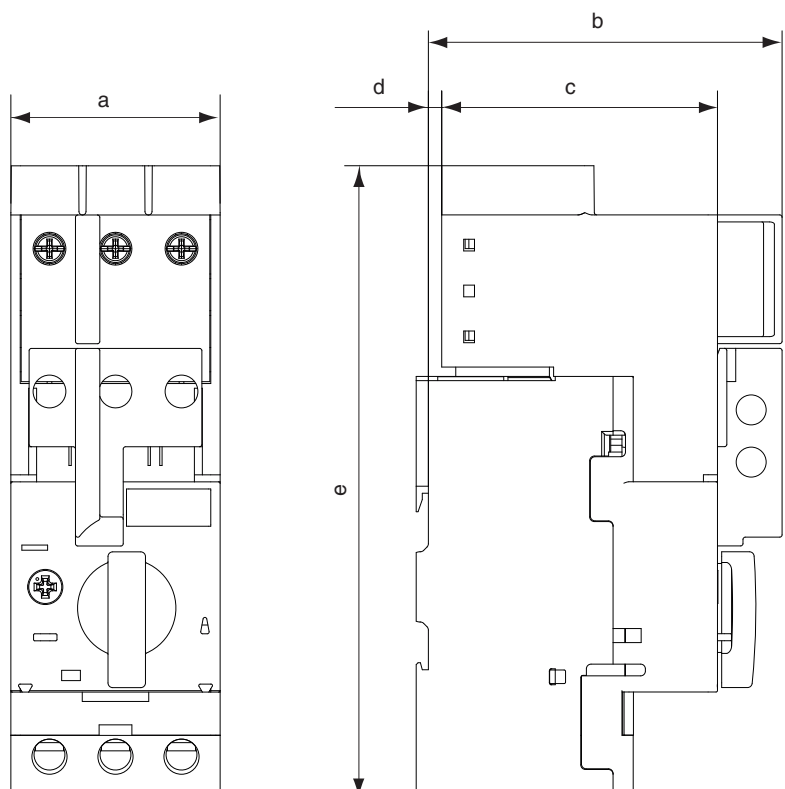
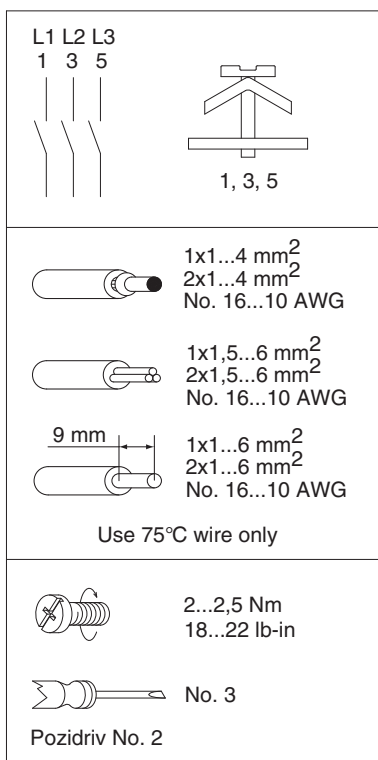
Messa in servizio e manutenzione solo da personale specializzato;
attenersi alle istruzioni per l'esercizio!

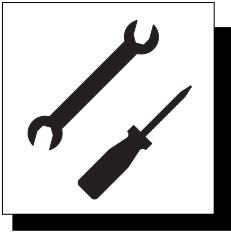
Instrucciones de montaje

¡Puesta en servicio y mantenimiento exclusivamente por personal especializado;
respetar las instrucciones de puesta en servicio y mantenimiento!



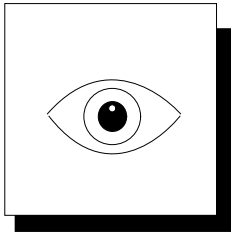
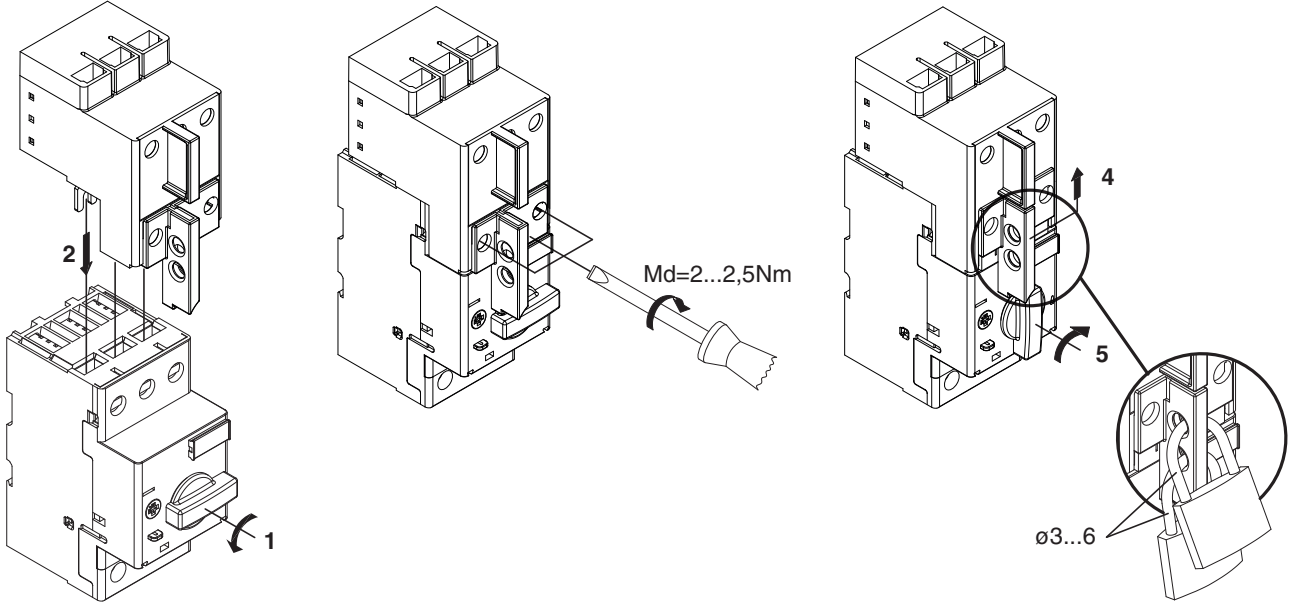
KT7-25-TRE with	a	b	c	d	e
KT7-25S	44,7	75,55	58,9	2,85	134,9
KT7-25H	44,7	85,55	58,9	12,85	134,9





Mounting of KT7-25-TRE
 Montage von KT7-25-TRE
 Montage du KT7-25-TRE
 Montaggio di KT7-25-TRE
 Montaje de KT7-25-TRE

sprecher+schuh



Interlocking of KT7-25-TRE
 Verriegelung von KT7-25-TRE
 Verrouillage du KT7-25-TRE
 Interblocco di KT7-25-TRE
 Enclavamiento de KT7-25-TRE

In position On
 In Stellung Ein
 En position enclenché
 In posizione chiusa
 En posiccion cerrado

In position Off (disconnected)
 In Stellung Aus (getrennt)
 En position déclenché (sectionné)
 In posizione aperta (sezionato)
 En posiccion abierta (desconectado)

