
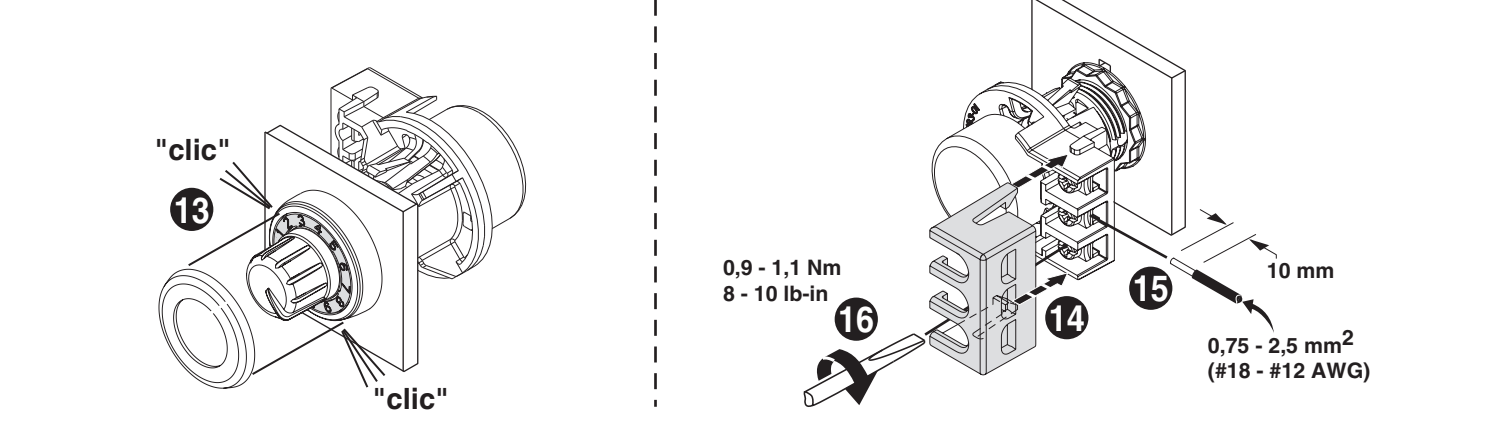
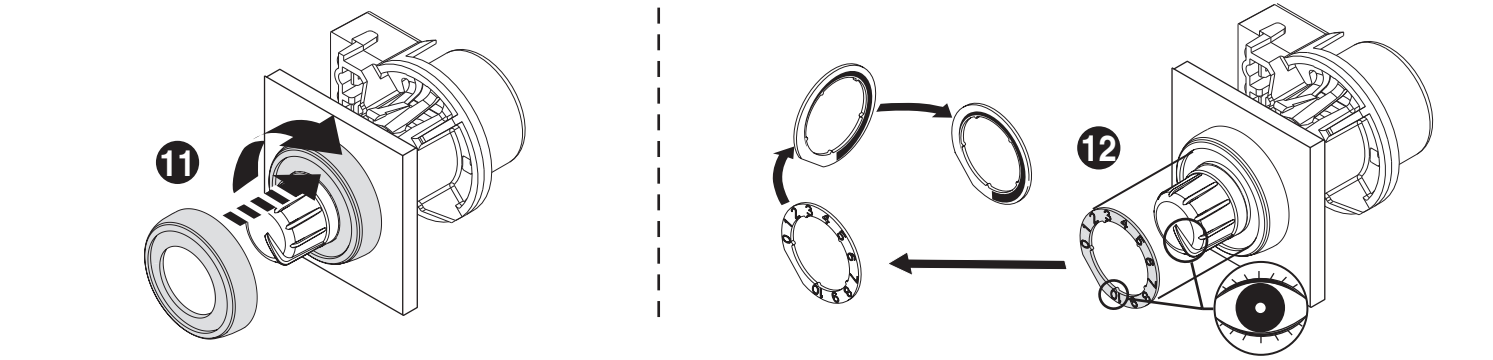
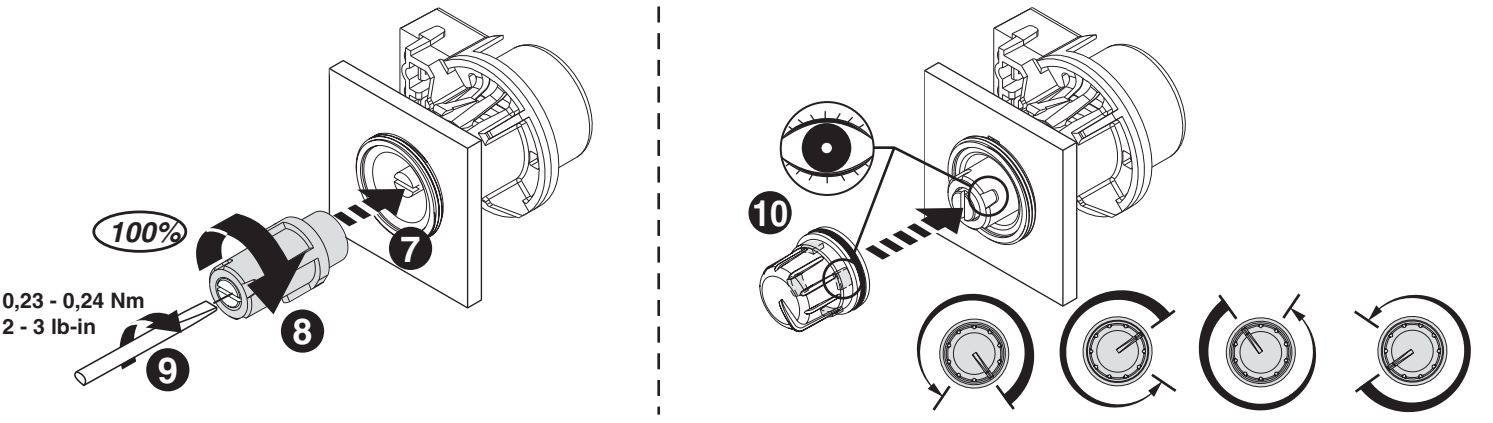
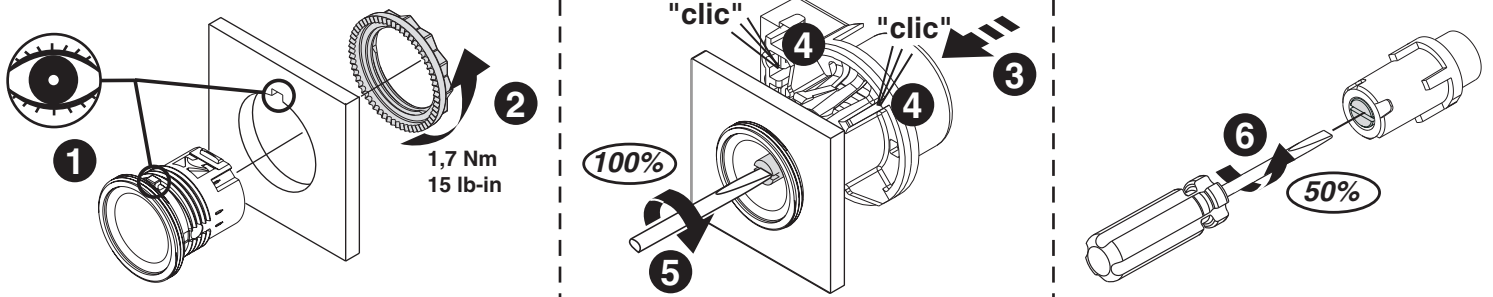


Potentiometer Operator
 Opérateur potentiomètre
 Potentiometer-Bedienungselement
 Operatore potenziometro
 Operador potenciômetro
 Operador de potenciômetro
 (Cat ____ - POT Ser B)

Installation
 Montage
 Montaggio
 Instalação
 Instalación

	WARNING	To prevent electrical shock, disconnect from power source before installing or servicing.
	AVERTISSEMENT	Avant le montage et la mise en service, couper l'alimentation secteur pour éviter toute décharge.
	WARNUNG	Vor Installations- oder Servicearbeiten Stromversorgung zur Vermeidung von elektrischen Unfällen trennen.
	AVVERTENZA	Per prevenire infortuni, togliere tensione prima dell'installazione o manutenzione.
	ATENÇÃO	Para evitar choques, desconectar da corrente elétrica antes de fazer a instalação ou a manutenção.
	ADVERTENCIA	Desconéctese de la corriente eléctrica, antes de la instalación o del servicio, a fin de impedir sacudidas eléctricas.



Customer Supplied Potentiometer

	Max.		Min.
a	6.4 mm	5.9 mm	5.7 mm
(ø Dia)	.252 in.	.232 in.	.224 in.
b	24 mm	32 mm	14 mm
(Length)	.945 in.	1.26 in.	.551 in.

