

Design rails onscreen
Print a variety of reports
Order quickly & easily

EZ-rail™ Rail Building Software

Simplify Design

Select & Place Terminal Blocks

Add Jumpers & Specify Labels

Print Custom Reports & Order with Ease

Save your EZ-rail file for customer reference, or use it to place your order

Specify terminal block ratings to suit UL, IEC or CSA requirements

Select low- or high-profile rail type

Specify labeling of terminal blocks

Add jumper bars between blocks

Add terminals individually, in groups of 3, 5, or 10, or enter the quantity desired

Catalog Num	Amps	Color	Descriptio
V7-W4-W	30	White	IEC Singl
V7-W4-Y	30	Yellow	IEC Singl
V7-W4-P	20	Gray	IEC Singl
V7-W4-PTP	20	Gray	IEC Singl
V7-W6	40	Gray	IEC Singl
V7-W6-B	40	Blue	IEC Singl
V7-W6-BL	40	Black	IEC Singl
V7-W6-BR	40	Brown	IEC Singl
V7-W6-G	40	Green	IEC Singl
V7-W6-OR	40	Orange	IEC Singl
V7-W6-RE	40	Red	IEC Singl
V7-W6-W	40	White	IEC Singl
V7-W6-Y	40	Yellow	IEC Singl
V7-W70	200	Gray	IEC Singl
V7-W70-B	200	Blue	IEC Singl
V7-WD3	15	Gray	IEC Dout
V7-WD3-B	15	Blue	IEC Dout
V7-WD3-BL	15	Black	IEC Dout
V7-WD3-BR	15	Brown	IEC Dout
V7-WD3-G	15	Green	IEC Dout

Generate rail diagrams, marker reports, item lists, consolidated bills of material and price reports for saving or printing

See a WYSIWIG representation of your rail as you design it

Rearrange terminal blocks individually or as a group, with drag-and-drop ease

Double-click terminal block for technical data, including electrical standard, description and maximum wire size



EZ-rail makes quick work of terminal rail design and component specification. It is a must-have tool for anyone in the business of using terminal blocks or assembling rails.

Instead of thumbing through a catalog and picking out colorless, shapeless part numbers, **EZ-rail** lets you choose terminal blocks from a simple scrolling menu, and builds a visual representation of your rail as you select each component!

Best of all, when you are satisfied with your “virtual rail,” **EZ-rail** will generate up to five documents that may be saved and/or printed, including:

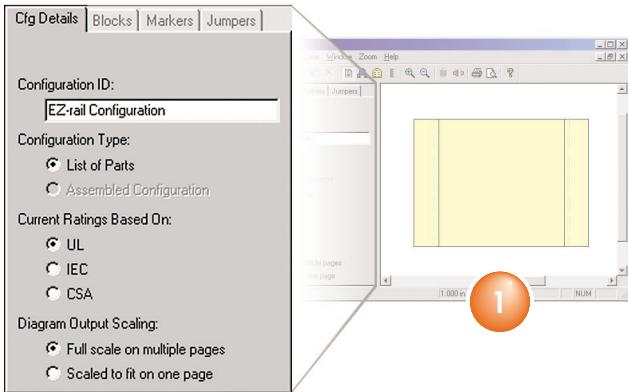
- Rail diagram
- Marker report
- Item list
- Consolidated bill of materials
- Price report

These custom reports allow you to order your components quickly from a generated item list, create a quick bill of materials, and use the rail diagram as a guide for assembly.

To get your **FREE** copy of EZ-rail software, order the CD (literature #V7-CD-2) from your Sprecher + Schuh representative, or download EZ-rail from our web site at www.ssusa.cc



V7 EZ-rail™ Rail Building Software

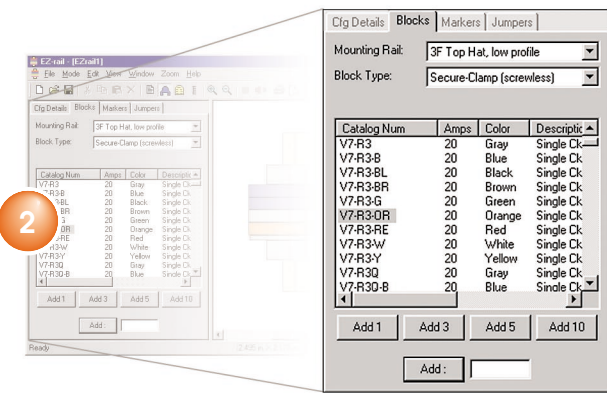


1. Specify configuration details

With the **Configuration Details** tab, you can name your custom rail, specify UL, IEC or CSA terminal block ratings, and select the scale of your diagram window. To view other windows within the program, just click the tab that corresponds to the section you'd like to see.

2. Select & place terminal blocks

Click the **Blocks** tab to begin adding terminals to your rail. Here, you can specify the rail type (high or low profile) and terminal type (screw-type or SecureClamp™). A menu of all terminal blocks appears for the terminal type you select. Click the desired terminal block on the menu, and using the buttons below, add 1, 3, 5 or 10 terminals at a time. EZ-rail automatically selects the correct end anchors and terminal block barriers, and keeps a running total of the rail's dimensions in the lower right corner of the window.

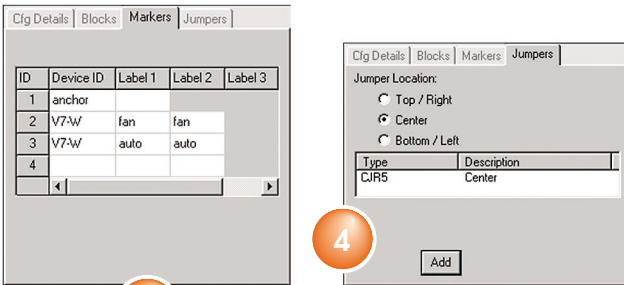


3. Specify terminal block labeling

Select the **Marker** tab to view all available marker locations for each terminal block on your rail. By placing your cursor in the corresponding cell, you can enter custom device IDs and terminal labels.

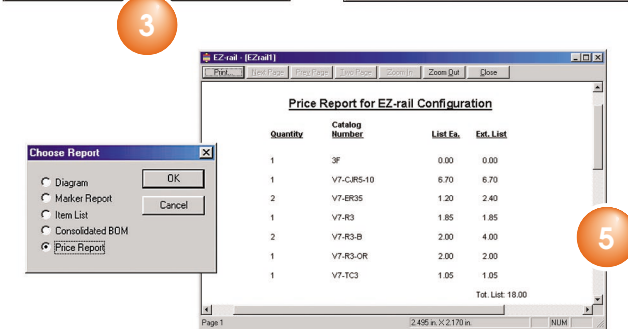
4. Add jumpers

With the **Jumpers** tab, you can jumper multiple terminal blocks together in your EZ-rail diagram. Using the shift key, select multiple terminals, and EZ-rail will provide a list of available jumpers for the type of block you select, along with positioning options (top/right, center, bottom/left).



5. Preview & print custom reports

EZ-rail can generate and print a number of documents for each rail you build. The **Diagram** provides a color representation of your rail, just like the image you see in the EZ-rail buildup screen. The **Marker Report** lists terminals in order of position, along with user-specified device IDs and labels. The **Item List** provides catalog numbers and descriptions for each terminal block, in order of position on the rail. A **Consolidated Bill of Materials** itemizes all parts used on the rail, with quantities, catalog numbers and descriptions. And finally, a **Price Report** can be generated, showing quantities, catalog numbers, list prices, extended prices, and total cost.



It doesn't get any easier! Download your free copy at www.ssusa.cc or order the EZ-rail CD by requesting literature number V7-CD-2.

Sprecher + Schuh US Division Headquarters
15910 International Plaza Dr., Houston, TX 77032
Tel: (281) 442-9000; Fax: (800) 739-7370
www.ssusa.cc

Sprecher + Schuh Canadian Division
3610 Nashua Dr., Unit 10, Mississauga, Ontario L4V 1L2
Tel: (905) 677-7514; Fax: (905) 677-7663
www.sscdn.cc

